

Historic, Archive Document

Do not assume content reflects current scientific knowledge, policies, or practices.



LIBRARY
RECEIVED
★ FEB 26 1929 ★
U. S. Department of Agriculture

A New
PLANT BOOK
For 1929



THE WESTERN MARYLAND NURSERIES
WESTMINSTER, MARYLAND



EVERGREENS

Our special offer of fine Evergreens for foundation planting—all balled and burlapped, shipped by freight or express. We guarantee them to reach you in perfect condition.

1 Pyramidal Arborvitæ, 18 to 24 in.	} All for \$12.79 Worth \$21 Save \$8; Order Today
1 Irish Juniper, 18 to 24 in.	
1 Moss Retinospora, (<i>R. reitchi</i>), 12 to 18 in.	
1 Globe Arborvitæ, 10 to 12 in.	
1 American Arborvitæ, 15 to 18 in.	

ONLY ONE ORDER TO A CUSTOMER

Our Amateur's Collection

Here is your chance to get a fine lot of Evergreens for a small investment. These trees are small but well rooted, of fine varieties, and in a few years' time will grow to be worth \$2 to \$3 each.

12 trees, our selection \$5.59
for your locality, shipped by express collect, for

A BIG SAVING. ORDER NOW

Perennials!

SPECIAL OFFERS

6 English Delphiniums, extra-fine, named varieties \$2.98 postpaid. (These plants ordinarily sell for \$1 each.)

6 Long-spurred Columbines, all different, \$1 postpaid (worth \$3).

5 Irises, all different, \$1 postpaid (worth \$3). These are nice varieties; good colors.

10 Choice Hardy Perennials, all different, for \$1.69 postpaid. They bloom at different times. A garden of flowers for \$1.69. Only one order to a customer.

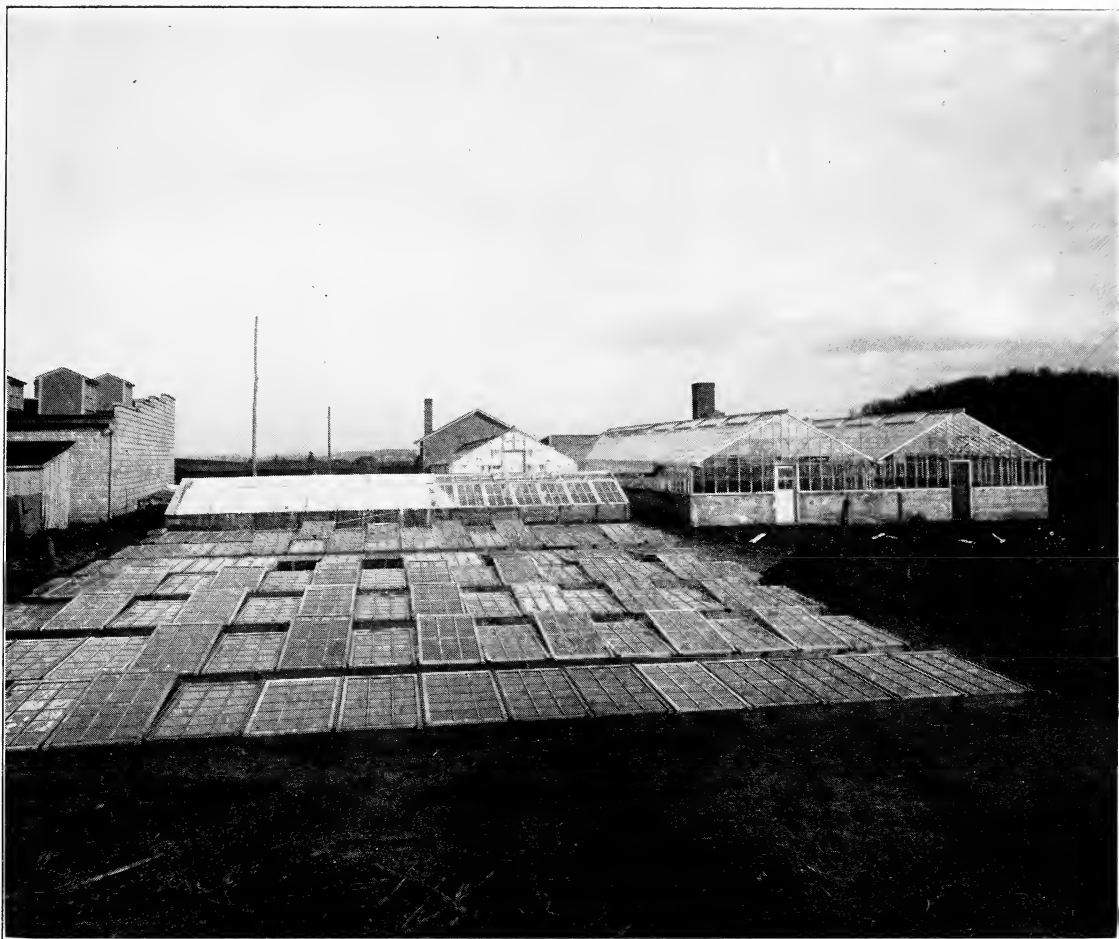
Hardy Perennials

Collection Illustrated on Front Cover for \$5

- | | |
|--------------------------------|--------------------------|
| 2 Delphiniums | 2 Columbines |
| 2 Foxgloves | 2 Hollyhocks |
| 2 Hardy Phlox | 1 Pyrethrum |
| 3 Peonies—Pink, Red, and White | 2 Iris, German, assorted |
| 2 Canterbury Bells | 2 Shasta Daisies |
| | 1 Coreopsis |

21 Extra-Choice \$5 **POST PAID**
Perennials for





Partial View of Cold Storage Packing Building and Propagating Plant

A WORD in regard to our propagating department. The above picture will show you one of the most complete plant factories in this part of the country, as you will notice there are large greenhouses for growing large potted plants, and there are smaller greenhouses for propagating young evergreens, there are hot-beds for nursing little plants along, there are cold frames where plants are hardened off before they are sent to the fields to grow into large shrubbery and trees. There are seedling frames where there are thousands of evergreen seedlings grown, and you will see that we are actually growing these plants and send them out in the best possible condition to grow.

We have shipped perennials over in the Rocky Mountain states and they have reached their destination in excellent condition. Our men are experienced in growing and handling this stock. We have propagators from Europe that thoroughly understand the growing and propagating of the thousands of plants we send out.

Our plants are fresh dug and shipped to you immediately. You can judge for yourself on the size from the above picture, and you will readily see why it is to your interest to buy your plants, trees and shrubbery from the Western Maryland Nurseries. This only shows a portion of our propagating plant, as space does not permit us to picture the various places in the nursery which might be of interest to you.

OUR CATALOG

With Special Prices --- Season 1929

THIS is our Price List of Nursery Stock for Farm and City or Suburban Homes. We can supply promptly any quantity and the exact variety you may order, from enough stock to plant a commercial orchard or cut-flower farm to a few choice shrubs or rose bushes for your home grounds.

With the added facilities of our new buildings, Green Houses, Storage and Packing Departments, and our Office and Shipping departments, we can give prompt attention to your correspondence and orders. We are confident that the benefits of this new plant will be appreciated by all those with whom we do business.

As Nursery specialists, we are continually adding to our already well-balanced stock of varieties, new and rare items of special interest.

Important Information for Customers

Please Read Carefully Before Ordering

In presenting our 1929 Price List we assure all customers of prompt attention to orders and inquiries. We appreciate the confidence our customers have placed in us, and this catalog lists only stock which we believe is desirable and can recommend highly.

RELIABILITY

Thirty-four years of growing high-grade nursery stock has placed us among the foremost nurserymen in the country. Dun, Bradstreet, or any bank or business house in Westminster will vouch for our reliability.

HOW TO ORDER

In making out your order, be particular to specify just what variety is wanted. Your name, post office and shipping point should be written plainly to avoid mistakes. If you are in doubt as to whether your stock should go forward by express or freight, you may safely leave the decision to our judgment.

TERMS

Cash with order, except in large orders, where satisfactory reference is given.

HOW TO REMIT

Remittance should be made by check, post office money order, express money order, draft, or registered letter.

RATES

Five or more at ten rate.
Fifty or more at hundred rate.
Four hundred or more at thousand rate.

PARCEL POST

Small packages can be forwarded by parcel post. POSTAGE is required on orders to be sent by parcel post. SEND PAYMENT WITH ORDER. All orders are acknowledged immediately upon receipt.

We guarantee every tree, plant, etc., to be up to grade specified or better. All our fruit trees are graded by height and caliper.

BOXING AND PACKING FREE

We box and pack all orders without charge. All orders are put up in boxes or bales which are lined with heavy paper to guard against stock drying out. The trees and plants are packed in moist excelsior and straw. This is expensive, but good packing pays—pays customers, pays us. We guarantee the arrival of stock in good condition.

SHIPPING

We do not charge for packing, boxing or delivering to freight offices or express companies. We do not prepay charges, unless goods are to be delivered to a prepaid station, as all our prices and quotations are FREE ON BOARD CARS AT OUR NURSERIES. If there is no agent at your station, and shipment has to be prepaid, notify us and we will prepay charges, and bill you for same after shipment is made.

SHIPPING SEASONS

The spring shipping season usually commences here about March 1st, and continues until about May 15th. Of course, the time of shipping your stock depends on your location. We commence making Southern shipments about January 1st. Our fall season commences about October 15th, and we continue to make shipments until the ground freezes. We advise spring planting for berry plants and peach trees.

SPECIAL DISCOUNT

Five per cent discount on all orders received on or before March 1st, or 3% discount on cash orders received after March 1st, for spring delivery, and 5% discount on all orders received before October 1st, or 3% thereafter for fall delivery. This special discount is not allowed unless all cash accompanies your order.

The
WESTERN MARYLAND NURSERIES

WESTMINSTER, MARYLAND

ESTABLISHED 1893



OFFICE OF THE WESTERN MARYLAND NURSERIES

DISPLAY GARDENS, BOXWOOD AZALEA AND RHODODENDRON PLANTING IN REAR OF BUILDING

IN this modern equipped building is where your orders receive their first attention. We have large floor space elegantly lighted and is one of the most modern nursery office buildings in the East. Adjoining this office building is our display gardens, where you can see how the arrangements of plants and flowers make a beautiful garden. Our Landscape Department office takes up a part of this building and is equipped to give you the best that there is in Landscape gardening. A visit will convince you why the Western Maryland Nurseries can take care of your requirements to give you complete satisfaction.



The above picture will give you an idea how our landscape department can add beauty to the factory as well as a home.

This photo will acquaint you with our Mr. J. E. Stoner, Proprietor of the Western Maryland Nurseries, who has spent the greater part of his life in the nursery business, and it is his desire that you should receive from these nurseries the very best of plants, shrubs, evergreens, etc., that it is possible to grow, and he guarantees that they will reach you in the very best condition. Your letters will receive his personal attention and assures you perfect satisfaction with the stock you receive from the Western Maryland Nurseries.



**NO CASH DISCOUNT ALLOWED
ON SPECIAL OFFERS**



Our Landscape Department

A WORD to you about our landscape department. If your home grounds are large or small and you have a peculiar or complicated problem, we are ready to help you solve these problems. Write us in care of our Landscape Department and our expert will give you advice along these lines. This department will draw you individual complete plans of your home grounds absolutely free if you purchase this stock from us, such as shrubs, shade trees, hedges, rose bushes, vines, etc.

If your grounds are large and you desire a personal visit from our landscape architect write us and we will give you estimate of what the cost will be, as we travel through a good many states in carrying out our landscape plans. We give your problems time and thought, as we know so many places are mis-planted. We are careful in selecting the right kind of plants to make your home beautiful and to give a permanent landscape planting. This department specializes in large specimen gardens, rock gardens, lily pools, and all the different things that go to make a home beautiful. We have the facilities for carrying out our plans, furnishing the necessary stock from our nursery and planting same, if you are close enough. If not, our plans and specifications are such that any person that is accustomed to planting trees and shrubs can carry them out.

Our Landscape Architect has hundreds of plantings in the United States that are permanent and lasting. We plan your home grounds in such a way that you will be satisfied in the beginning and in later years. We are careful not to fill your place with rank shrubs, which in a few years have to be cut down and other planting done. We arrange our plantings to bring out the spring beauty, the mid-summer beauty and the autumn beauty by arranging the different shrubs in their respective places. Such plantings are possible most anywhere in the United States.

Write us and your letters will have our personal attention and immediate reply will be given.

Deciduous Shrubs for Home Planting

A LONG the roadway, along the pathway, around the house foundation, as borders, for massing—one might mention a large number of special places where deciduous shrubs will supply a well-defined need in a planting scheme. Wherever the place may be, however, a wise selection from the list which follows will make possible flowering shrubs around the home or scattered over the estate. Beautiful combinations of handsome vari-colored leaves, berries and blossoms that will give continuous bloom from spring until fall is possible from the selection of shrubs featured by the Western Maryland Nurseries.



ALTHEA

Althea—or Rose of Sharon—The Altheas are fine, free-growing, flowering shrubs and are easy to cultivate. Very desirable on account of blooming in August and September, when scarcely any other tree or shrub is in blossom. We have the following varieties.

Double White (Jeanne 'd Arc)—This is a pure white, double-flowing variety. Very attractive.

Double Red—(Boule de Feu). Freest blossoming of all the double varieties. Very attractive; bright in color.

Double Pink—(Puleherimus), Very fine pink.

Double Rose Red (Amplissi)—Very attractive color.

Double Violet—(Ardens) Large handsome flowers.

White with Cherry Red Center—(Paeonia Flore) A very attractive flowering shrub. All varieties listed priced as follows:

18 to 24 in.	Each, \$.40	Per 10, \$3.50
2 to 3 ft.	Each, .50	Per 10, 4.50
3 to 4 ft.	Each, .60	Per 10, 5.50

Abelia Grandiflora—Glossy abelia, grows 3 to 4 feet; evergreen; choice small shrub, with white tinted flowers, very fragrant, produced throughout the entire summer months.

12 to 18 in.	Each, \$.50	Per 10, \$4.50
18 to 24 in.	Each, .75	Per 10, 7.00
2 to 3 ft.	Each, 1.00	Per 10, 9.00

Almond—Early spring flowering shrubs, whose flowers appear before the foliage. We have both the pink and white.

1½ to 2 ft.	Each \$.80	Per 10, \$7.50
------------------	-------------	----------------

Amorpha Fruticosa Indigobush—Grows 8 to 10 feet. Deep purple flowers in June; splendid habit.

12 to 18 in.	Each, \$.30	Per 10, \$2.50
18 to 24 in.	Each, .40	Per 10, 3.50
2 to 3 ft.	Each, .50	Per 10, 4.50

Aralia—(Acanthopanax pentaphylla) An attractive shrub with glossy deep green leaves and light gray twigs in winter. Flowers insignificant but valuable as a landscape shrub.

18 to 24 in.	Each, \$.50	Per 10, \$4.75
2 to 3 ft.	Each, .60	Per 10, 5.75
3 to 4 ft.	Each, .70	Per 10, 6.75

Aronia Melanocarpa (Black Choke Berry)—Grows 8 to 10 feet. Delicate white flowers in May, and black berries persist until late in the season.

12 to 18 in.	Each, \$.60	Per 10, \$5.00
18 to 24 in.	Each, .75	Per 10, 6.50

Buddleia var. Magnifica (Butterfly Bush or Summer Lilac)—This beautiful shrub matures rapidly and produces beautiful lilac-colored flowers in profusion. Blossoms the entire summer; splendid for cutting. Should be cut back to ground every spring.

18 to 24 in.	Each, \$.40	Per 10, \$3.00
2 to 3 ft.	Each, .50	Per 10, 4.00
3 to 4 ft.	Each, .60	Per 10, 5.00

NEW RED-LEAVED JAPANESE BARBERRY
(*Berberis Thunbergi Atropurpurea*)

Similar in all respects to the green-leaved Japanese Barberry which is so popular for mixing in the shrubbery border, as single specimens, or for planting in clumps on the lawn, as well as for foundation planting and for hedges, but the foliage of this new variety is of a rich, lustrous, bronzy red similar to the richest red-leaved Japanese Maples. As the season advances, this new Barberry becomes more brilliant and gorgeous and in the fall its foliage changes to vivid orange, scarlet and red shades. In this coloring it is unequalled by any other shrub and is followed by the same brilliant scarlet berries common to the type which remain on the plant the entire winter.

All that is required to develop its brilliant coloring at all seasons is to plant in full exposure to the sun.

	Each doz.	100
Strong one-year-old plants..	\$.60	\$5.50 \$50.00
Heavy two-year-old plants..	.75	7.00 65.00

Barberry Thunbergii (Japan Barberry)—A dwarf grower of thick, compact habit, graceful drooping branches, stands pruning well. Its brilliant red fruit elings through most of the winter. Leaves light green changing to a beautiful copper red in the fall. Also valuable for foundation planting, facing taller shrubbery or for planting singly on the lawn. Perfectly hardy.

SPECIAL PRICES

	10	100	1000
6 to 9 in.	\$.65	\$ 5.00	\$ 40.00
9 to 12 in.	1.00	8.00	70.00
12 to 18 in.	1.40	11.00	90.00
18 to 24 in.	2.00	16.50	140.00
2 to 2½ ft.	3.00	24.00	200.00

We do not ship Barberry by Parcel Post

Beauty Bush—(*Kolkwitzia Amabilis*), An exceedingly handsome ornamental shrub which has come to us from the wildernesses of China and Central Asia. The foliage and habit are attractive when the bush is out of flower and it is perfectly hardy as far north as Montreal.

It grows 6 to 9 feet high when mature and as much through, erect and twiggy, producing long, arching branches covered in spring with clusters of small, tubular flowers of the honeysuckle type, borne in such profusion that the bush is one cloud of delicate pink.

Beauty Bush has all the merits of a perfect shrub: hardiness, year-round beauty in foliage and habit, and an amazing profusion of flowers of beautiful color.

12 to 18 in.	Each, \$1.00	Per 10, \$ 9.00
18 to 24 in.	Each, 1.25	Per 10, 10.50

Calycanthus (Sweet Shrub)—Very desirable; the wood is fragrant, foliage rich, flowers of a rare chocolate color, deliciously fragrant; blossoms in June and at intervals thereafter.

12 to 18 in.	Each, \$.50	Per 10 \$4.50
18 to 24 in.	Each, .60	Per 10 5.50

Snowberry Vulgaris (Red Snowberry or Coral Berry)—A low growing, graceful shrub. Its fruits are red, and the small red berries cluster in thick ropes along the weighted-down stems.

12 to 18 in.	Each, \$.25	Per 10, \$2.25
18 to 24 in.	Each, .35	Per 10, 3.00
2 to 3 ft.	Each, .45	Per 10, 4.00

Cranberry, High Bush—A very decorative shrub, with white flowers in May followed by beautiful, showy clusters of scarlet fruits.

12 to 18 in.	Each, \$.50	Per 10, \$4.00
18 to 24 in.	Each, .60	Per 10, 5.00

Cladrastis Lutea (Yellow Wood)—A striking tree with long panicles; fragrant white flowers in June.

12 to 18 in.	Each, \$.30	Per 10, \$2.50
18 to 24 in.	Each, .40	Per 10, 3.00



How Shrubs add to the Beauty of Your Home

Crepe Myrtle (Purple, Pink and White)—Spring delivery only.

18 to 24 in.	Each, \$1.00	Per 10, \$8.50
-------------------	--------------	----------------

Cydonia Japonica (Japanese Flowering Quince)—Very ornamental in early spring, as its bright scarlet flowers completely cover the branches before the leaves are formed. The fruits which follow later are quince-shaped and quite fragrant. Has stout branches with fine thorns. Makes a good defensive hedge. Blooms in early May.

18 to 24 in.	Each, \$.65	Per 10, \$6.00
-------------------	--------------	----------------

Crabs—See Flowering Trees page 19.

Deutzia

Deutzia Lemoine—Medium size growing shrub, with abundance white flowers produced with great profusion. One of Lemoines finest Deutzias.

18 to 24 in.	Each, \$.45	Per 10, \$4.00
2 to 3 ft.	Each, .60	Per 10, 5.00
3 to 4 ft.	Each, .70	Per 10, 6.00

Deutzia Candissima (Snow Flake Deutzia)—Pure white flowers, very double, which are so perfect in shape they are frequently used as cut flowers.

12 to 18 in.	Each, \$.30	Per 10, \$2.75
18 to 24 in.	Each, .40	Per 10, 3.75
2 to 3 ft.	Each, .50	Per 10, 4.75

Deutzia Crenata (Double Pink Deutzia)—Grows 6 to 8 feet. Pink, slightly fragrant flowers in June.

18 to 24 in.	Each, \$.30	Per 10, \$2.50
2 to 3 ft.	Each, .40	Per 10, 3.50
3 to 4 ft.	Each, .50	Per 10, 4.50

Deutzia Gracilis (Slender Deutzia)—Grows 3 feet tall. Profuse bloomer, pure white; blooms in May. Useful for facing.

15 to 18 in.	Each, \$.40	Per 10, \$3.50
18 to 24 in.	Each, .50	Per 10, 4.50

Deutzia Pride of Rochester (Flowered Deutzia)—Very large, double white flowers tinged with pink in May and June. It excels in size of flower, profuse bloom and vigorous growth. The best of the Deutzias.

18 to 24 in.	Each, \$.25	Per 10, \$2.25
2 to 3 ft.	Each, .40	Per 10, 3.75
3 to 4 ft.	Each, .50	Per 10, 4.75

Elder (Cut Leaf)—Leaves finely cut. Similar flowers and fruit to preceding. Distinct, desirable shrub.

12 to 18 in.	Each, \$.50	Per 10, \$4.75
18 to 24 in.	Each, .65	Per 10, 6.00
2 to 3 ft.	Each, .75	Per 10, 7.00

Elder (Golden)—Upright with golden foliage.

12 to 18 in.	Each, \$.50	Per 10, \$4.75
18 to 24 in.	Each, .65	Per 10, 6.00
2 to 3 ft.	Each, .75	Per 10, 7.00

Euonymus (Alatus, Winged)—Wood very corky; brilliant foliage in Fall.

12 to 18 in.	Each, \$.65	Per 10, \$6.00
18 to 24 in.	Each, .75	Per 10, 7.00

Euonymus (Wahoo)—Deep purple flowers; fruit scarlet.

12 to 18 in.	Each, \$.70	Per 10, \$6.50
18 to 24 in.	Each, .85	Per 10, 8.00

Dogwood (Cornus Paniculata)—Gray Dogwood, with numerous white flowers in May, followed by white fruits on red stems, like moisture.

1½ to 2 ft.	Each, \$.50	Per 10, \$4.75
2 to 3 ft.	Each, .65	Per 10, 6.00
3 to 4 ft.	Each, .75	Per 10, 7.00

Forsythia Fortunei—Grows 7 to 8 feet; good habit, arching branches and vigorous, upright grower. Yellow or golden flower, blooming April and May.

18 to 24 in.	Each, \$.30	Per 10, \$2.75
2 to 3 ft.	Each, .40	Per 10, 3.75
3 to 4 ft.	Each, .50	Per 10, 4.75

Forsythia Intermedia (Border Golden Bell)—Grows 6 to 8 feet. Bright yellow flowers in April before the leaves unfold. Profuse and beautiful in bloom. Yellow or golden bloom April and May.

18 to 24 in.	Each, \$.30	Per 10, \$2.75
2 to 3 ft.	Each, .40	Per 10, 3.75
3 to 4 ft.	Each, .50	Per 10, 4.75

Forsythia (Suspensa)—Weeping golden Bell, graceful drooping habit. Excellent for massing, banks, or hanging over retaining walls.

18 to 24 in.	Each, \$.30	Per 10, \$2.75
2 to 3 ft.	Each, .40	Per 10, 3.75
3 to 4 ft.	Each, .50	Per 10, 4.75

Forsythia Viridissima (Green Stem Forsythia)—Grows 7 to 8 feet. Vigorous grower; has dark green bark and thick green leaves. This is the last of the Forsythias to flower. Yellow or golden bloom April and May.

18 to 24 in.	Each, \$.50	Per 10, \$4.50
2 to 3 ft.	Each, .60	Per 10, 5.50
3 to 4 ft.	Each, .70	Per 10, 6.50

14 POPULAR FLOWERING SHRUBS

Packed, shipped express collect for **\$5.35**
worth \$7.50

2 Weigelia 2 to 3 ft.
1 Hydrangea Hills of Snow 2 to 3 ft.
2 Buddleia Butterfly, strong 2 yr.
2 Deutzia Pride of Rochester 2 to 3 ft.
2 Philadelphus Mock Orange 2 to 3 ft.
2 Forsythia Golden Bell 2 to 3 ft.
2 Snowberry, Red and White 2 ft.
1 Hydrangea P. G. 18 in.

We have made this selection so that they can be used in so many places around the foundation and border.

Two collections for \$9.85.

Hammelis Virginiana—Grows 10 to 12 feet. Yellow ribbon-like flowers in October and November. Bushy habit, good foliage; succeeds best in moist, half-shady places.

12 to 18 in.	Each, \$.35	Per 10, \$3.00
18 to 24 in.	Each, .45	Per 10, 4.00
2 to 3 ft.	Each, .60	Per 10, 5.00

Honeysuckles, Red Tartarian (Tatarica Rosea)—The best known of all the Bush Honeysuckles. Grows to a height of 8 to 10 feet, with upright, somewhat spreading branches and bright green foliage. The flowers are borne freely in May and June, are of bright pink color, followed by snowy red berries which ripen in mid-summer, and cling to the bush for several weeks.

Honeysuckle, White Tartarian (Tatarica Alba)—About the same as the above except that the flowers are white.

Two above varieties of upright Honeysuckle:

18 to 24 in.	Each, \$.50	Per 10, \$4.50
2 to 3 ft.	Each, .60	Per 10, 5.00
3 to 4 ft.	Each, .70	Per 10, 6.00

Bella Candida (White Bell Honeysuckle)—Grows 8 to 9 feet; vigorous.

Morrowii—Grows 7 to 8 feet. Spreading habits. White flowers during May and June. Good foliage.

Prices on two climbing vines, above, as follows:

12 to 18 in.	Each, \$.40	Per 10, \$3.50
18 to 24 in.	Each, .50	Per 10, 4.00
2 to 3 ft.	Each, .65	Per 10, 5.00



Hydrangea Arborescens (Hills of Snow or Everblooming)—Becomes a good-sized shrub to which the name Hills of Snow may well be applied—a profusion of large, snow-white flowers turning green instead of bronze as do other Hydrangeas. Easily grown in ordinary garden soil and thrives in partial shade, but does best in full sun. It blooms from June till September.

12 to 18 in. Each, \$.40 Per 10, \$3.75
 18 to 24 in. Each, .50 Per 10, 4.75
 2 to 3 ft. Each, .60 Per 10, 5.75

Hydrangea Paniculata Grandiflora—A good variety to follow Hills of Snow, blooming profusely in August and September when few other shrubs are in bloom. It produces the largest flower heads of any of the hardy shrubs. Allowed to grow naturally, it assumes stately proportions, reaching a height of seven feet, and during the hot months is covered with its great pyramidal panicles, white on opening, assuming rose and bronze tints on the sunny side and drooping gracefully of their own weight. Valuable for winter decoration if flowers are allowed to dry on bush.

12 to 18 in. Each, \$.50 Per 10, \$4.00
 18 to 24 in. Each, .60 Per 10, 5.00
 2 to 3 ft. Each, .70 Per 10, 6.00

Tree Hydrangea—Standard grower.

2 to 3 ft. Each, \$1.25 Per 10, \$10.00
 3 to 4 ft. Each, 1.50 Per 10, 12.50

Incisa Vitex—

12 to 18 in. Each, \$.40 Per 10, \$3.50
 18 to 24 in. Each, .50 Per 10, 4.00
 2 to 3 ft. Each, .60 Per 10, 5.00

Hypericum (St. Johnswort)—Grows 3 to 4 feet. Yellow flowers during July and August.

12 to 18 in. Each, \$.40 Per 10, \$3.50
 18 to 24 in. Each, .50 Per 10, 4.50

Kerria Japonica (Japan Corchorus)—A handsome, green-leaved shrub, growing 4 to 5 feet. Graceful, slender, drooping branches, painted with a wealth of rich, dark yellow flowers in June, and to some extent all summer.

18 to 24 in. Each, \$.50 Per 10, \$4.00
 2 to 3 ft. Each, .60 Per 10, 5.50
 3 to 4 ft. Each, .75 Per 10, 6.50

Kerria Japonica (Flora Pleno)—More vigorous in growth than the preceding. Flowers double, numerous and very showy. Dark Yellow flowers.

18 to 24 in. Each, \$.50 Per 10, \$4.75
 2 to 3 ft. Each, .60 Per 10, 5.50
 3 to 4 ft. Each, .75 Per 10, 7.00

Lindera Benzoin (Spice Bush)—This beautiful shrub is very attractive with yellow flowers in April, scarlet berries, leaves aromatic—like moisture.

1½ to 2 ft. Each, \$.45 Per 10, \$4.00
 2 to 3 ft. Each, .60 Per 10, 5.50

Mallow Marvela (Hibiscus)—This shrub is larger and more brilliant than the old forms. Plants frequently grow five ft. and during July and August produce flowers 8 and 10 inches across, especially if properly cared for. We can furnish in white, light and deep pink and red.

2 year No. 1 plants Each, . Per 10, .

Rhamnus (Laurel-leaved Buckthorn)—Spreading in growth. Leaves about 4 inches long, glossy. Berries black, in showy clusters. An ornamental, useful shrub.

18 to 24 in. Each, \$.40 Per 10, \$3.75
 2 to 3 ft. Each, .50 Per 10, 4.75

Rhus Typhina Laciniata (Cut-Leaved Stag-horn Sumach)—A variety of the preceding with deeply cut, fern-like leaflets. It colors a rich crimson in autumn and is excellent for massing or when grown as a single specimen.

3 to 4 ft. Each, \$.50 Per 10, \$4.75
 4 to 5 ft. Each, .65 Per 10, 6.00

Rhus Staghorn—Similar to *Glabra* (above), but with velvety hairy bark.

3 to 4 ft. Each, \$.50 Per 10, \$4.75
 4 to 5 ft. Each, .65 Per 10, 6.00



Spirea Anthony Waterer—Bright pink. June and July. A compact low-growing shrub with dense foliage usually deep green with occasional variegated leaves of pink and white on young growth. Flowers are borne in full, flat clusters on erect stems. If these are cut away when they fade the shrub will usually bloom intermittently during the summer. Very valuable for edging in front of shrubbery or sometimes used as a dwarf hedge.

12 to 18 in. Each, \$.35 Per 10, \$3.00
 18 to 24 in. Each, .45 Per 10, 4.00

Spirea Billardi—Grows 5 to 6 feet; pink fluffy flower spikes; July to October; valuable for dry places.

2 to 3 ft. Each, \$.50 Per 10, \$4.00
 3 to 4 ft. Each, .65 Per 10, 5.50

Spirea Callosa Alba (Japonica)—White, June-July. Purplish-green foliage when young. Blooms freely.

12 to 18 in. Each, \$.35 Per 10, \$3.00
 18 to 24 in. Each, .45 Per 10, 4.00
 24 to 30 in. Each, .60 Per 10, 5.00

Spirea Collosa Rosea—Very similar to *Spirea Anthony Waterer*, but more upright and rapid in growth. Light pink flowers.

12 to 18 in. Each, \$.35 Per 10, \$3.00
 18 to 24 in. Each, .45 Per 10, 4.00
 2 to 3 ft. Each, .60 Per 10, 5.00

Spirea Inca—Blue.

12 to 18 in. Each, \$.50 Per 10, \$4.00
 18 to 24 in. Each, .60 Per 10, 5.00

Spirea Opulifolia Aurea (Golden Ninebark)—Grows 9 to 10 feet; golden leaved variety; white flowers in early June.

18 to 24 in. Each, \$.35 Per 10, \$3.00
 2 to 3 ft. Each, .50 Per 10, 4.50
 3 to 4 ft. Each, .60 Per 10, 5.00

Spirea Opulifolia (Ninebark)—Creamy white flowers in June. Grows 9 to 10 feet. Vigorous grower.

18 to 24 in. Each, \$.40 Per 10, \$3.50
 2 to 3 ft. Each, .50 Per 10, 4.50

Spirea Reevesiana—Grows 7 to 8 feet; pure white. Flowers May and June; graceful arching habit; retains leaves until late.

18 to 24 in. Each, \$.40 Per 10, \$3.00
 2 to 3 ft. Each, .50 Per 10, 4.00

Spirea Prunifolia (Bridal Wreath)—Double white flowers in May, handsome dark green foliage turning orange in autumn.

18 to 24 in. Each, \$.35 Per 10, \$3.00
 2 to 3 ft. Each, .45 Per 10, 4.00
 3 to 4 ft. Each, .60 Per 10, 5.00

Spirea Thunbergi—Slender arching branches, clothed with pure white flowers, April-May. Feathery light green leaves. Valuable for seaside planting. Good fall coloring.

12 to 18 in. Each, \$.40 Per 10, \$3.50
 18 to 24 in. Each, .50 Per 10, 4.50
 2 to 3 ft. Each, .60 Per 10, 5.00



Spirea Van Houttei—Without doubt the finest variety in the collection. At the flowering season in May and June the plant is covered with a mass of large, white flowers, presenting a beautiful appearance. Very hardy. One of the finest shrubs.

18-24 in., Each, .25 Per 10, \$2.00 Per 100, \$18.00
 2-3 ft., Each, .40 Per 10, 3.00 Per 100, 25.00
 3-4 ft., Each, .50 Per 10, 4.00 Per 100, 30.00
 4-5 ft., Each, .60 Per 10, 5.00 Per 100, 40.00



LILACS

Syringa (Lilacs)—We have both the old-fashioned Lilacs and the new French Lilacs. Our Lilacs are several times transplanted and have a very fibrous root system. They are also free from borers and dangerous insects. Our French Lilacs, grown on their own roots when possible will bloom much earlier than the old common Lilacs. We are very particular about having our Lilacs true to name.

- Alexander Humbolt**—Reddish purple.
 12 to 18 in. Each, \$.45
 18 to 24 in. Each, .65
 2 to 3 ft. Each, .75
- Alphonse Lavalle**—Double violet.
 12 to 18 in. Each, \$.50
 18 to 24 in. Each, .65
 2 to 3 ft. Each, .75
- Belle De Nancy**—A brilliant satiny rose with a white center. Double. This is a fine variety.
 12 to 18 in. Each, \$.65
 18 to 24 in. Each, .80
- Charles Jolly**—Double. A very beautiful bright crimson, one of its best in this color.
 12 to 18 in. Each, \$.60
 18 to 24 in. Each, .75
- Charles X**—Single. A tall growing species of purplish-red.
 12 to 18 in. Each, \$.65
 18 to 24 in. Each, .75
- Common Purple**—Lilacs.
 2 to 3 ft. Each, \$.50
 3 to 4 ft. Each, .65
- Emile Lemoine**—Rosy lilac.
 12 to 18 in. Each, \$.50
 18 to 24 in. Each, .65
 2 to 3 ft. Each, .75
- Jean Bart**—Double. Rosy carmine.
 12 to 18 in. Each, \$.50
 18 to 24 in. Each, .65
 2 to 3 ft. Each, .85

- Mad. Lemoine**—Double. White.
 12 to 18 in. Each, \$.50
 18 to 24 in. Each, .65
 2 to 3 ft. Each, .75

- Mad. Abel Chatenay**—Double White.
 12 to 18 in. Each, \$.50
 18 to 24 in. Each, .75

Marie LeGraye—Single, white. This is one of the best of the white Lilacs, beautiful variety.

- 12 to 18 in. Each, \$.50
 18 to 24 in. Each, .75

Michael Buchner—A fine double purple. A very choice hybrid.

- 12 to 18 in. Each, \$.50
 18 to 24 in. Each, .75

Mme. Casimir Perier (Double White)—A fine large white variety similar to Marie LeGraye.

- 12 to 18 in. Each, \$.50
 18 to 24 in. Each, .75

President Grevy—This is a double blue. The flowers are very large and handsome and of a soft bluish color.

- 12 to 18 in. Each, \$.60
 18 to 24 in. Each, .85

- Prince de Beauvau**—Double. Violet.
 12 to 18 in. Each, \$.65
 18 to 24 in. Each, .75
 2 to 3 ft. Each, 1.00

- Rothmagensis**—Single. Red.
 12 to 18 in. Each, \$.65
 18 to 24 in. Each, .75
 2 to 3 ft. Each, 1.00

Rubra de Marley (Dark Red)—Double purple. Price same as President Grevy. Very fine. One you should have.

- 12 to 18 in. Each, \$.65
 18 to 24 in. Each, .75

S. de Ludwig Spaeth (Blackish Red)—Single purple. Some call this a crimson purple, very dark. One of the darkest.

- 12 to 18 in. Each, \$.70
 18 to 24 in. Each, 1.00

- Tournefort**—Single, lavender.
 12 to 18 in. Each, \$.65
 18 to 24 in. Each, .75
 2 to 3 ft. Each, 1.00

William Robinson—Very large trusses of deep violet.

- 12 to 18 in. Each, \$.60
 18 to 24 in. Each, .75

Syringa Lemoine—Grows 2 to 3 feet. Beautiful trusses of pure white, double flowers.
 18 to 24 in. Each, \$.50 Per 10, \$4.50

Syringa (Philadelphus Coronarius)—Sweet scented Mock Orange. Well-known old fashioned shrub, with pure white, highly-scented flowers; blooms among the earliest of the family.
 18 to 24 in. Each, \$.40 Per 10, \$3.50
 2 to 3 ft. Each, .50 Per 10, 4.50

Viburnum Dentatum (Arrow Wood)—Grows 10 to 12 feet. Flowers white, May and June. Berries blue-black. Autumn coloring, purple and red; thrives in wet soil.

18 to 24 in. Each, \$.50 Per 10, \$4.00
2 to 3 ft. Each, .65 Per 10, 5.00

Viburnum Opulus (Cranberry, High Bush)—

(See page 7)

Collections Shrubs

Weigelia Rosea—An old garden favorite; has beautiful large rose-colored flowers. Distinctive; very hardy.

18 to 24 in. Each, \$.40 Per 10, \$3.50
2 to 3 ft. Each, .50 Per 10, 4.00
3 to 4 ft. Each, .60 Per 10, 5.50

Weigelia Nana (Variegated)—Of dwarf habit; finely variegated foliage which lasts the entire season. Flowers rose-colored. Leaves bordered with yellowish white.

12 to 18 in. Each, \$.40 Per 10, \$3.50
18 to 24 in. Each, .50 Per 10, 4.50
2 to 3 ft. Each, .70 Per 10, 6.50

Weigelia Eva Rathke—A charming, new Weigelia; flowers, brilliant crimson; a beautiful, distinct, clear shade; mid-summer.

18 to 24 in. Each, \$.50 Per 10, \$4.50
2 to 3 ft. Each, .65 Per 10, 6.00

FRENCH HYDRANGEAS

These are the plants grown by the florist as pot plants for Easter and Decoration but they are very decorative when used for the porch, lawn or garden during the summer. We have the finest French and German varieties.

Baby Bimbenet—Fine silvery rose.

Chautard—Pink, easy foreer.

E. G. Hill—Clear pink; early foreer.

Gen de Vibraye—Bright rose.

3 in. pots 25c each; \$2.50 per doz.
5 in. pots, 60c each; \$6.00 per doz.

Trophee—Early Red.

Lillie Moulliere—Carmine Rose.

Splendens—Glossy; clear red.

Coquelicat—Early; deep carmine.

3 in. pots, 35c each; \$3.50 per doz.

5 in. pots, 75c each; \$7.50 per doz.

Snowberry Vulgaris (Red Snowberry or Coral Berry)—A low growing, graceful shrub. Its fruits are red, and the small red berries cluster in thick ropes along the weighted-down stems.

12 to 18 in. Each, \$.30 Per 10, \$2.50
18 to 24 in. Each, .40 Per 10, 3.50
2 to 3 ft. Each, .50 Per 10, 4.40

Snowberry, White (E)—Bushy form, small pink flowers in summer; quantities of large, white, waxy, roundish berries in autumn that remain on the plant through part of the winter. Extra large.

18 to 24 in. Each, \$.40 Per 10, \$3.50
2 to 3 ft. Each, .50 Per 10, 4.50

Snowball Common (Viburnum Sterile)—Has showy round heads of white flowers, May-June. No fruits are produced.

12 to 18 in. Each, \$.65 Per 10, \$6.00
18 to 24 in. Each, .75 Per 10, 7.00

Snowball Japanese (Viburnum Plicatum)—Showy white flowers in balls, June. Handsome foliage, purple in autumn. No fruits.

12 to 18 in. Each, \$.75 Per 10, \$7.00
18 to 24 in. Each, .85 Per 10, 8.00

Specimen Stock

If you want large shrubs, evergreens or trees for immediate effect write us your wants and we will quote you by letter as we have acres of specimen stock for the persons who want immediate results.



BOSTON IVY

Amelopsis Veitchii (Boston Ivy)—The most popular climbing vine for covering brick and stone walls makes a rapid growth and the foliage turns to autumn glows in the fall.

2 year No. 1, plants, Each, \$.50 Per 10, \$4.50

Aristolochia (Dutchman Pipe)—A vigorous and rapid-growing climber. The very large leaves make it a valuable plant where dense shade is wanted.

2 year No. 1 Each, \$.75 Per 10, \$7.00

Bigonia Radicus (Trumpet Vine)—For covering old trees, stumps, the pergola, this vine is very valuable. The flowers are large, deep red and orange and are produced profusely when the plant obtains full growth.

2 year No. 1 Each, \$.50 Per 10, \$4.50

Celastrus Scandens (Bittersweet)—One of our native climbing plants of rapid growth with light green foliage and yellow flowers, followed in the autumn by bright orange berries, which are most desirable for cutting.

2 year No. 1 Each, \$.50 Per 10, \$4.50

Clematis Henryii—Large flowering creamy white; a companion to the purple variety.

2 year No. 1 Each, \$.90 Per 10, \$8.50

Clematis Jackmani—This is the large flowering purple Clematis which is used very much around porch planting and lattice work, and should be included in every home planting.

2 year No. 1 Each, \$.90 Per 10, \$8.50

Clematis Madam Villard—This is a bright carmine large flowering variety and is very useful where you want a red clematis.

2 year No. 1 Each, \$.95 Per 10, \$9.00

Clematis Paniculata—This is the most satisfactory of all the clematis, the foliage is fine deep green and the flowers are pure white, deliciously fragrant and are borne in great profusion.

2 year No. 1 Each, \$.50 Per 10, \$4.75

Clematis Ramona—This is a large flowering, double white Clematis and is useful where you want a contrast with the purple.

2 year No. 1 Each, \$.90 Per 10, \$8.50

VINES (Continued)

Eunomyus (The Trailing Evergreen Bittersweet)—*Radicus Vegetus*. The strong growing variety with large leaves and bright orange red berries which remain on the plant the greater part of the winter.

2 year No. 1 Each, \$.50 Per 10, \$4.75

English Ivy (Hedera)—This is a well-known vine used in English gardens and covering walls, etc. Not hardy in the northern states.

2 year No. 1 Each, \$.50 Per 10, \$4.50

Jasmine Gardenia—Yellow.

2 year No. 1 Each \$.50 Per 10, \$4.75

Jasmine Trailing—White.

2 year No. 1 Each, \$.60 Per 10, \$5.00

Lonicera (Honeysuckle)—*Halliana* or Halls, Japan. A combination of white and yellow, extremely fragrant and a rapid grower. Useful for lattice and pergolas.

2 year No. 1 Each, \$.50 Per 10, \$4.00

Lonicera (Honeysuckle)—Scarlet Trumpet. Same as above except scarlet and yellow flowers.

2 year No. 1 Each, \$.60 Per 10, \$5.00

Vinca Minor—A blue flowering, trailing vine with evergreen foliage. Very useful for ground covers, etc.

2 year No. 1 Each, \$.30 Per 10, \$2.50

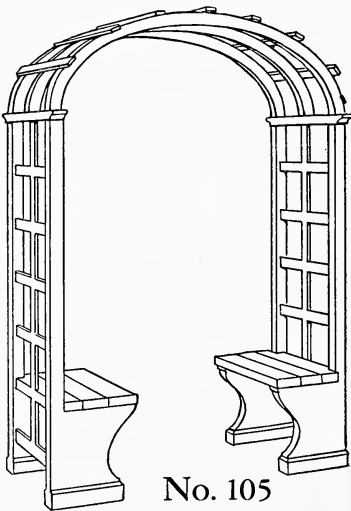
Wisteria Blue—One of the most valuable climbers over porches and tall lattice work, pergolas, etc., and are covered in early summer with large drooping clusters of fragrant blossoms.

2 year No. 1 \$.75

Wisteria Purple and Wisteria White—Same as above, 75c.

Our Garden Furniture Department

We make and carry in stock a large line of Pergolas, Arbors, Bird Baths and Garden Supplies. *Write for circular and Prices.*



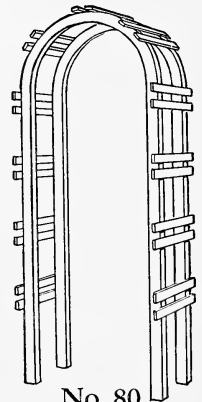
No. 105
Arbor Seat

ARBOR SEAT No. 105

A very decorative piece of furniture which is useful in many places in the garden. A delightful shady bower when covered with roses or other vines. 5 ft. wide, 2 ft. deep, \$50.00. 5 ft. wide, 30 inches deep, \$56.00. Freight or express collect.

We can furnish you with all necessary things such as
Labels,
Fertilizer,
Grass Seed
and Spray
Material
for your Garden

Write for Catalogue



No. 80
Rose Arch

ROSE ARCH No. 80

Simple and inexpensive but substantial and attractive. A real value in a choice of three sizes.

3 ft. wide, 2 ft. deep, \$11.00

4 ft. wide, 2 ft. deep, 12.50

5 ft. wide, 2 ft. deep, 14.00

Ornamental Trees for Shade and Beauty

Ash, American White—Fine for shade or parking trees. Each
 3 to 4 ft. \$.40
 4 to 5 ft.75
 5 to 6 ft. 1.25
 6 to 8 ft. 1.50

Ash Leaf Maple (Box Elder, *Acer negundo*)—A fine, rapid growing variety with handsome light green foliage and spreading head; very hardy, desirable for street planting.
 3 to 4 ft.50
 4 to 5 ft. \$.75

American Beech (*Fagus Ferruginea*)—Handsome, symmetrical tree; smooth gray bark. Excellent for screen and lawn, or for specimen. For high hedges when clipped.
 3 to 4 ft. \$1.50
 4 to 5 ft. 1.75

Beech (Purple Leaved)—A good tree for picturesque and contrast effect. Compact in growth and a symmetrical tree for large lawns.
 2 to 3 ft. Each, \$.50

European White Birch (*Fagus Sylvatica*)—Its tall, slender, yet vigorous growth, graceful branches, silvery white bark and delicately cut foliage present a combination of attractive characteristics rarely met with in a single tree.
 6 to 7 ft. Each, \$1.50

Birch Wpg. See page 16.

Butternuts—See page 18.

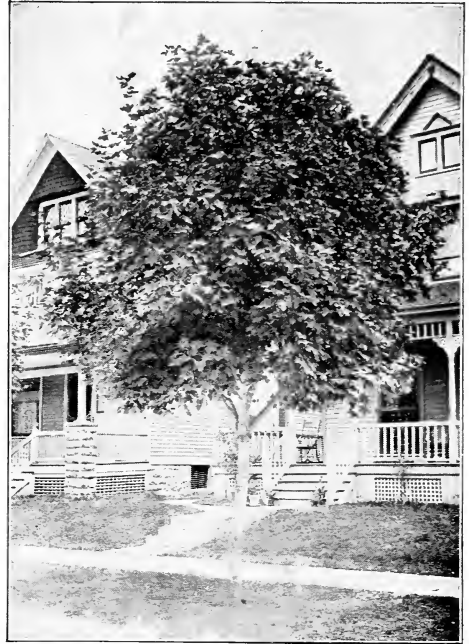
Catalpa Speciosa—A highly desirable tropical appearing tree with large, fragrant, purple and white flowers. Flowers abundantly in June.
 5 to 6 ft. \$.70
 6 to 8 ft.90

Crabs—See page 19.

American Elm (*Ulmus Americana*)—One of the noblest and most picturesque of American trees. Easily distinguished by its wide arching top, vase-like form, and pendulous branches.
 4 to 5 ft. \$.75
 5 to 6 ft. 1.00
 6 to 8 ft. 1.50
 8 to 10 ft. 2.00

Elm, Chinese—A new Elm, originated in China. Fast growing, well-shaped tree, free from disease. This is the coming permanent, quickgrowing shade tree. We recommend it above all others where quick shade and a permanent tree is desired.
 3 to 4 ft. \$1.00
 4 to 5 ft. 1.25
 5 to 6 ft. 2.00
 6 to 8 ft. 2.75

Elm Moline—A remarkable new variety of extremely strong growth and large, handsome, deep grain foliage.
 2 to 3 ft. Each \$.50
 3 to 4 ft. Each .85
 4 to 5 ft. Each 1.25



ORIENTAL PLANE (See Page 17)

Celtis Occidentalis (Northern Hackberry)—Grows 50 to 60 feet. Similar foliage and habit as the elm.
 12 to 18 in. Each, \$.30 Per 10, \$2.50
 18 to 24 in. Each, .40 Per 10, 3.00

Horse Chestnut (*Aesculus*)—A well-known variety. Its magnificent spikes of white flowers make it very attractive. Fine for street planting.
 2 to 3 ft. Each, .75
 3 to 4 ft. Each, \$1.50
 4 to 5 ft. Each, \$2.50

Linden Am. (*Americana*)—Stately, rapid growing tree, with large, showy leaves and fragrant flowers. Very desirable on account of their fine, luxuriant foliage. Valuable for their beautiful white wood. 5 to 6 ft., \$1.00; 6 to 8 ft., \$1.25, 8 to 10 ft., \$2.00 each.

Linden Eup.—Price as above.

Locust (Honey)—Thorny tree with fragrant white flowers in May; good for gravelly soil. Not affected by borers.
 18 to 24 in. Each, \$.20
 2 to 3 ft. Each, .30

Silver Maple (*dasycarpum* or *eriocarpum* *Acer*)—Beautiful ornamental tree, in great demand for street, lawn and park planting. Easy to transplant; fast grower, thrives equally well in drained or low, swampy locations. 5 to 6 ft., 75c; 6 to 8 ft., \$1.00; 8 to 10 ft., \$1.30; 10 to 12 ft., \$2.75 each.

Sugar Maple (*saccharinum Acer*)—A magnificent, well-proportioned and long-lived tree, producing maple sugar. Its stately form and vigorous growth make it a desirable ornamental tree.

5 to 6 ft.	\$1.25
6 to 8 ft.	2.00
8 to 10 ft.	3.50
10 to 12 ft.	5.00



NORWAY MAPLE

Norway Maple (*platanoides Acer*)—Most beautiful shade tree. Perfect in form; free from disease. Sturdy, compact and vigorous grower, forming a rounded head of stout branches of clean, broad, deep green foliage. Perfectly hardy. Excellent for street planting or for shade on lawn.

4 to 5 ft.	\$1.00
5 to 6 ft.	1.25
6 to 8 ft.	2.00
8 to 10 ft.	3.50
1½ in. caliper, 10 to 12 feet	5.00
2½ in. caliper, 12 to 16 ft.	7.00

Schwedleri (Scarlet Maple, *rubrum Acer*)—Strikingly vivid crimson fall foliage; tall, spreading; prefers moist positions; red flowers in early spring. 6-7 ft., \$2.50.

Maple, Wieri (Cut Leaf). Large graceful, drooping form; very desirable.

5 to 6 ft.	Each, \$2.00
6 to 8 ft.	Each, 2.50

Maple (Japan Blood Leaf)—Very scarce. Small, compact; foliage blood red.

8 to 12 in	\$2.75
12 to 15 in.	4.50

European Mt. Ash (*Pyrus Sorbus Aucuparia*)—Fine, hardy tree, covered from July till winter with clusters of bright red berries. Very ornamental.

6 to 8 ft.	\$1.40
8 to 10 ft.	1.75

Mt. Ash, (Oak Leaf)—This tree is the same as the European Mt. Ash, except the foliage is the same as Oak leaf. A very desirable straight growing tree for shade and beauty.

3 to 4 ft.	Each, \$1.00
4 to 5 ft.	Each, 1.25

Pin Oak—Takes most kindly to cultivation; prefers moist soil, but is very adaptable. Particularly fitting as a street tree; good autumn effects.

18 to 24 in.	Each, \$.50
2 to 3 ft.	Each, .75
4 to 5 ft.	Each, 1.00
8 to 10 ft.	Each, 5.00

Poplar Bolleana—Leaves white underneath; similar character to Lombardy poplar. Gray bark, grows quickly.

4 to 5 ft.	Each, \$.75
5 to 6 ft.	Each, 1.00

Carolina Poplar (*Populus monolifera*)—Rapid grower. Large leaves, glossy, deep green. Valuable where shade is desired quickly. Useful as a screen or as windbreak.

5 to 6 ft.	\$.40
6 to 8 ft.50
8 to 10 ft.75
10 to 12 ft.	1.00

Lombardy Poplar (*Populus fastigiata* or *dilatata*)—Well known for its erect, rapid growth and spike-like form; used for screen and formal plantings. 5 to 6 ft., 50c; 6 to 8 ft., 65c; 8 to 10 ft., \$1.00; 10 to 12 ft., \$1.50; 12 to 16 ft., \$2.25; 16 to 20 feet, \$3.00 each .

Poplar Chinese—Similar to Lombardy, more compact grower and is said to be an improved type of poplar for ornamental screen etc.

5 to 6 ft.	Each, \$.75
6 to 8 ft.	Each, .85
8 to 10 ft.	Each, 1.00

Plum (Purple Leaf, *Prunus Pissardi*)—Finest purple-leaved small tree. Young branches are very dark purple; leaves when young are lustrous crimson changing to dark purple, and retain this beautiful tint until they drop. 4 ft., \$1.25 each.

Pecans—See nut trees page 18.

Red Bud (*Cercis Canadensis*)—Profuse, rich purple flowers in early spring. Effective with evergreens. 5 to 6 ft., \$1.00; 6 to 8 ft., \$1.25; 8 to 10 ft., \$2.25 each

Russian Olive—Silver-gray leaves and branchlets, orange berries. Good for massing—prefers sun.

2 to 3 ft.	Each, \$.75
3 to 4 ft.	Each, 1.00

Oriental Plane (*Platanus orientalis*)—Very popular for street growing. A rapid, upright, clean grower and long lived; beautiful, dense foliage. It is not affected by the air of cities or by insects. The bark peels off the trunk and branches in autumn, leaving the whole tree of a creamy white color all through the winter.

- 4 to 5 ft.\$1.00
- 5 to 6 ft. 1.40
- 6 to 8 ft. 1.75
- 8 to 10 ft. 2.25

Tulip Poplar (*Liriodendron tulipifera*)—Large, rapidly spreading tree; fragrant yellow flowers. 5 to 6 ft., \$1.50 6 to 8 ft., \$2.00.

Walnuts—See page 18.

Willow—Laurel Leaf, Shining dark green leaves makes this a worthwhile back ground. Good for the seashore.

- 18 to 24 in. Each, \$.40
- 2 to 3 ft. Each, .50
- 3 to 4 ft. Each, .60
- 4 to 5 ft. Each, .70

Willow, Pussy, Bush Form—Very desirable for spring effects. Will succeed in dry as well as wet places.

- Each
- 2 to 3 ft.\$.35
- 3 to 4 ft.45

Weeping Deciduous Trees

WEEPING Trees are divided into two classes, namely, those with grafted tops or heads which grow in umbrella-like form like the Weeping Mulberry, and excellently adapted for planting in small yards and gardens, and those with tall growing trunks having long, slender, drooping branches that are adapted for larger places where they can have sufficient room for development.

Birch, Cut-Leaved Weeping (*Betula var. pendula laciniata*)—Deservedly one of the most popular of all weeping trees. A strong, upright, grower with graceful drooping branches, silvery white bark and delicately cut foliage. 4 to 6 ft., \$3.50 each.

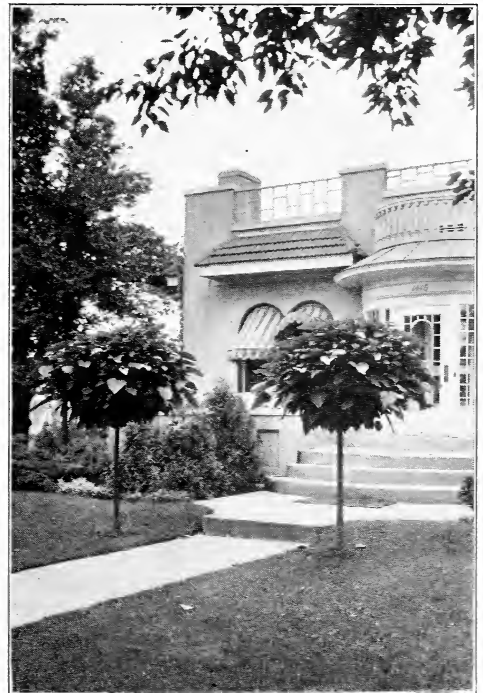
European Ash (*Fraxinus excelsior*)—A fine, hardy tree, the head is dense and regular, covered in June with a mass of white flowers, later with yellow berries, which turn into bright scarlet and last long into winter. Very beautiful. 2-year heads, \$2.75; 1-year heads, \$2.25 each.

Tea's Weeping Mulberry (*Morus alba pendula*)—A graceful, beautiful weeping tree, forming a perfect umbrella-shaped head, with long, slender, willowy branches drooping to the ground, gracefully swaying in the wind. Foliage lobed and of a delightfully fresh, glossy green. A rapid grower and exceedingly hardy. It bears edible berries in abundance—black and very sweet. 2-year heads, \$3.75; 1-year heads, \$2.75 each.

Catalpa Bungei (*Umbrella Catalpa*)—Grafted on stems 6 to 8 feet high, it makes a symmetrical, umbrella-shaped head without pruning. The leaves are large, heart-shaped, look like shingles on a roof. Hardy and succeeds everywhere. Very unique and desirable.

- 1 yr. head, 5 to 6 ft.\$1.25
- 1 yr. head, 6 to 7 ft. 1.75
- 2 yr. 1st class, 5 to 6 ft. 2.00
- 2 yr. 1st class, 6 to 7 ft. 2.25

Wisconsin Weeping Willow (*Salix babylonica dolorosa*)—A common, well known weeping variety. Forms a large, round-headed, graceful tree. Requires plenty of room and is highly desirable where space is available. 5 to 7 ft., 85c each; 7 to 8 ft., \$1.00.



CATALPA BUNGEII

CATALPA BUNGEII

There is no doubt that this is one of the trees that produces an ornamental effect that no other tree touches. Perfectly hardy and usually planted in pairs or in symmetrical rows. We grow them in all sizes and heights.

Grow Your Own Nuts

YOU can arrange your planting so that you can have valuable Nuts in your own yard and also have the beauty of a well planned yard. Nut trees will grow in places where it is hard to get other trees to start.

Nut Trees

Butternut—A fine, native tree producing a large, longish nut which is prized for its sweet, oily, nutritious kernel.

	Each
Butternut, 2 to 3 ft.	\$.40
Butternut, 3 to 4 ft.50
Butternut, 4 to 5 ft.75
Butternut, 5 to 6 ft.	1.25
Butternut, 6 to 8 ft.	1.50

English Walnut—One of the largest, most delicious meaty nuts, always in demand at a good price. Can generally be grown in any climate where peaches are grown.

	Each
English Walnut, 3 to 4 ft.	1.75
English Walnut, 2 to 3 ft.	1.50
English Walnut, 3 to 4 ft., grafted	3.50

BLACK WALNUTS

The Black Walnut hardly needs any introduction. It is one of our most useful timber and nut trees. We take special care in selecting our seed so that our trees will produce the large, fat, juicy nuts which no appetite can resist. They like a heavy, reasonably moist soil and soon grow into very valuable timber.

Nice trees 2-3 ft. each	30c
Nice trees 3-4 ft. each	50c

Japan Walnut—Perfectly hardy; a rapid grower, handsome leaves, bears young and abundantly. One of the finest ornamental trees. Nuts produced in clusters, the shell a little thicker than the English Walnut. Worthy of extensive planting.

	Each
Japan Walnut, 12 to 18 in.30
Japan Walnut, 18 to 24 in.40
Japan Walnut, 2 to 3 ft.50
Japan Walnut, 3 to 4 ft.60
Japan Walnut, 4 to 5 ft.	1.00
Japan Walnut, 5 to 6 ft.	1.50
Japan Walnut, 6 to 8 ft.	1.75

Thin-Shelled Pacan—Very thin shell, can be easily cracked in the hand; kernel plump and sweet and can be removed whole; this is the thinnest and easiest to crack of any we have seen. Tree vigorous grower, very prolific. Found a chance seedling, and on account of its cracking qualities, thus the name.

Pecan Stewarts, 3 to 4 ft., grafted	1.25
Pecan Stewarts, selected seedlings, 12 to 18 in.50

5 Evergreens \$3.75 Post Paid

1 Hoveyii Arborvitae 1 Globe Arborvitae
1 Retinaspora 2 Pyramidal Arborvitae
Twice Transplanted



*Just one
of our
fields of
Evergreens*

Flowering Trees

WHAT is more beautiful than spring time with her Flowering Crabs, Apples, the Red Bud or Judas Tree, Magnolia etc., with their abundance of flowers.

You can see as follows, we have a fine assortment of the hardier varieties which will please you and help make your lawn more cheerful.

Crab, Astraguinea—Red flowers freely borne.
3 to 4 ft. Each, \$1.00
4 to 5 ft. Each, 1.25

Crab, Bechtel's Double-Flowering—One of the most beautiful varieties of flowering crabs. Medium size, with large, double, fragrant flowers of a delicate pink in early spring.

From a distance they have the appearance of roses.

2 to 3 ft. Each, \$.75
3 to 4 ft. Each, 1.00

Crab Scheideckeri—Double pink lasting flowers. Large yellow fruit branches form narrow pyramidal heads.

3 to 4 ft. Each, \$1.25
4 to 5 ft. Each, 1.50

Dogwood, Gray, (Cornus Paniculata)—Upright, tall shrub, flowers and fruit white on red stems.

2 to 3 ft. Each, \$.65
3 to 4 ft. Each, .75

Dogwood, Red Flowering—The pink flowers, are more persistent than the white. Berries similar white type.

12 to 18 in. Each, \$2.75
2 to 3 ft. Each, 4.50
3 to 4 ft. Each, 5.50

Dogwood—(Red Osier, *Cornus stolonifera*) Red bark, white flowers and berries. Excellent for waterside planting.

2 to 3 ft. Each, \$.60
3 to 4 ft. Each, .75

Dogwood White Flowering—Among the best of native spring flowering small trees, bright red berries in fall.

2 to 3 ft. Each, \$.50
3 to 4 ft. Each, .65
4 to 5 ft. Each, 1.00
5 to 6 ft. Each, 1.25

Japanese Flowering Cherry—These Cherries are like the famous Washington D. C. Cherry Trees and are for spring planting only, and must be planted where there is the best of drainage.

Ben-Higan—This is the Japanese Cherry with large pink flowers produced in great profusion.

3 to 4 ft. Each, \$3.50

Brentwood—A dark pink semi-double large flowers, are very late. This with early varieties help to prolong the season.

3 to 4 ft. Each, \$3.50

Fugenzo—This variety is similar to the Brentwood, but double pink flowers, not so dark. Also late variety.

3 to 4 ft. Each \$3.50

Ichio (Hizakura)—This is a double light pink variety and blends in well with the dark shades.
3 to 4 ft. Each, \$3.50

Kwanzan (Kanzan-Sekiyama)—Double dark pink, late and one of the best varieties.

3 to 4 ft. Each, \$3.50

Minakami—Large single flowers, midseason bloomer, very good variety.

3 to 4 ft. Each, \$3.50

Shirofugen—Flowers pink in bud changing to white, bearing two leafy green carpels in center. Handsome. Neither single or double.

3 to 4 ft. Each, \$3.50

Magnolia Acuminata (Cucumber tree)—Pyramidal habit, vigorous growth; large leaves; flowers greenish yellow; pink fruits.

3 to 4 ft. Each, \$1.25
4 to 5 ft. Each, 1.50

Magnolia Glauca (Virginiana)—A very handsome small tree bearing sweetscented, creamy white cup-shaped flowers measuring two inches to three inches across. The leaves are large and pointed, and of a dark green color. It is a very desirable specimen tree.

2 to 3 ft. Each, \$1.00
3 to 4 ft. Each, 5.00

Peach Flowering—Decorative double flowering, blooms before leaves—red, pink or white.

2 to 3 ft. Each, \$.50
3 to 4 ft. Each, .65
4 to 5 ft. Each, .75

Prunis Triloba (Flowering Plum)—Double pink flowers before the leaves, April-May. Handsome and useful shrub.

2 to 3 ft. Each, \$.85
3 to 4 ft. Each, 1.00

Our Flowering Trees

What would be more beautiful than to have some of these flowering cherries and trees on your lawn and in the borders. They bloom early in the spring after the cold, long winters have kept us in by the fireside. That is why we appreciate the early spring flowering plants. They are the first to greet us after the long, hard winter. Plant some of these and watch for their magnificent flowers to appear, they are worth many times their cost and add so much to the beauty and value of your home. Plant in well-drained soil shipped by express only.



Evergreens

OUR Evergreens are carefully grown and well developed. Have been both root and top pruned, and are not to be compared with the loose unsymmetrical Evergreens that are found so commonly on the market. We dig and ball our evergreens with the utmost care, the burlap is securely tied about the roots and we very seldom lose a tree. We transplant our trees a great many times, thereby increasing the root growth which makes them much more desirable for home planting. We have thousands of evergreens in all stages of growth, see picture page 18. Place your order with us and you will not be disappointed because our evergreens grow.

American Arborvitae—This makes a wonderful hedge plant, also fine specimens on the lawn, and is very hardy and dependable in almost any place. A moist location is preferred, stands trimming well, grows bushy at the bottom and tapers at the top.

15 to 18 in. xx	Each, \$1.00	Per 10, \$ 9.00
18 to 24 in. xx	Each, 1.40	Per 10, 12.50
2 to 2½ ft. xxx	Each, 2.00	Per 10, 18.50

Arborvitae Globosa—This grows in a compact round ball shape deep green in color, holds its color in winter. One of the best and most popular evergreens for foundation planting. Seldom gets over 30 inches high.

10 to 12 in. x	Each, \$1.00	Per 10, \$ 9.00
12 to 15 in. x	Each, 1.50	Per 10, 14.00
15 to 18 in. x	Each, 2.00	Per 10, 18.50

Arborvitae Hoveyii—This is similar to Globe arborvitae. It is dwarf dense in habit having bright green foliage and is also very useful in foundation plantings.

8 to 10 in. x	Each, \$.75	Per 10, \$ 7.00
10 to 12 in. x	Each, 1.00	Per 10, 9.00
12 to 15 in. x	Each, 1.50	Per 10, 12.50
15 to 18 in. x	Each, 2.00	Per 10, 18.50

Arborvitae Pyramidalis—Undoubtly the most popular of all the arborvitae of today. Stays a nice glossy green in winter, dense foliage and grows pyramidal in habit. The one evergreen that is used so extensively in practically all landscape plantings. Our trees are fine specimens, you will be pleased with them.

12 to 18 in. x	Each, \$1.35	Per 10, \$12.50
18 to 24 in. xx	Each, 2.00	Per 10, 18.50
2 to 2½ ft. xxx	Each, 2.75	Per 10, 25.00
2½ to 3 ft. xxx	Each, 3.50	Per 10, 32.50

Arborvitae Tom Thumb—Very dwarf and slow growth of compact symmetrical habit, valuable where a low growing form is needed.

10 to 12 in.	Each, \$.90	Per 10, \$ 8.50
12 to 15 in.	Each, 1.20	Per 10, 10.00
15 to 18 in.	Each, 1.50	Per 10, 14.00
18 to 24 in.	Each, 2.25	Per 10, 20.00

Arborvitae Berkman Golden (*Biota Aruea Nana*)—Dwarf, slow growing in form, bright golden color which changes to bronze in winter. A very valuable tree in foundation plantings.

10 to 12 in. x	Each, \$1.50	Per 10, \$13.50
12 to 15 in. x	Each, 2.00	Per 10, 18.50
15 to 18 in. x	Each, 2.75	Per 10, 25.00
18 to 20 in. xx	Each, 3.50	Per 10, 32.50

Arborvitae Chinese (*Biota Pyramidalis*)—Closely resembles the Italian Cypress. Very slender form, light green foliage turning bronze in the winter.

18 to 24 in.	Each, \$1.85	Per 10, \$17.50
24 to 30 in.	Each, 2.25	Per 10, 20.00
30 to 36 in.	Each, 2.75	Per 10, 25.00
36 to 40 in.	Each, 3.00	Per 10, 27.50

Arborvitae George Peabody—Very similar to American Arborvitae except the foliage is a clear golden yellow. This variety is exceptionally good to get color contrast in your plantings.

12 to 18 in. xx	Each, \$2.75	Per 10, \$25.00
18 to 24 in. xxx	Each, 3.50	Per 10, 32.50

Arborvitae Siberian—It grows 6 to 8 feet in height is conical in outline, with dark green foliage, being much heavier than the average arborvitae and deeply crested. A fine evergreen for foundation planting, very hardy.

12 to 15 in. x	Each, \$1.50	Per 10, \$12.50
15 to 18 in. xx	Each, 2.00	Per 10, 17.50
18 to 24 in. xxx	Each, 3.25	Per 10, 30.00

Arborvitae Elegantissima—This is the golden tipped Arborvitae, grows 10 to 15 feet high, a rich lustrous green foliage, the branches are tipped with yellow.

12 to 18 in.	Each, \$1.75	Per 10, \$15.00
18 to 24 in.	Each, 2.25	Per 10, 20.00

Cypress

Cypress Lawsoniana—This is a tall graceful form, having very beautiful silver blue foliage on slender branches. The Cypress is a wonderful tree as a specimen on the lawn or in the garden. Ours are the true Lawson Cypress and are superior to seedling trees.

10 to 12 in.	x Each, \$1.75	Per 10, \$15.00
12 to 18 in.	x Each, 2.25	Per 10, 20.00
18 to 24 in.	xx Each, 3.25	Per 10, 30.00
2 to 3 ft.	xxx Each, 4.75	Per 10, 45.00

Cypress Lawsoniana Triomphe de Boskoop—This is an improvement over Lawsoniana, color a trifle deeper and claimed by some to be far superior. The trees we offer are grown from selected stock in the best possible way.

12 to 18 in.	x Each, \$2.50	Per 10, \$24.00
18 to 24 in.	xx Each, 3.50	Per 10, 32.50
2 to 3 ft.	xxx Each, 5.00	Per 10, 45.00



ARBOR VITAE PYRAMIDALIS

Fir Balsam—This has a dark green foliage, which has a balsam scent, very desirable in landscape plantings where a variety is wanted.

12 to 18 in. x	Each, \$2.25	Per 10, \$20.00
18 to 24 in. xx	Each, \$3.00	Per 10, 27.50

Cedar (See Juniper) page 22.

Fir Douglas—Sometimes called Douglas Spruce. There is two types of this tree, one from Colorado and the other from the Northwest Pacific Coast. Colorado variety is the one that we grow, very hardy and of great beauty. This is one of the trees that develops into a handsome specimen. Our trees are grown from the selected Colorado seed.

12 to 18 in.	xx Each, \$2.50	Per 10, \$22.50
18 to 24 in.	xxx Each, 3.25	Per 10, 30.00
2 to 3 ft.	xxxx Each, 4.75	Per 10, 45.00

Fir Concolor—This is the queen of the Firs. In my mind there is no other tree that makes a finer specimen on the lawn or in groups than the Concolor Fir. The foliage is similar in color to the blue spruce, and the new growth in the spring is a silvery whiteness and very beautiful. Our trees are grown from the selected Colorado seed, which insures their excellent form and color. Buy a Concolor Fir and, you will have a tree that will be beautiful and add value to your home grounds.

12 to 18 in.	xx Each, \$2.25	Per 10, \$20.00
18 to 24 in.	xxx Each, 3.00	Per 10, 27.50
2 to 2½ ft.	xxx Each, 4.50	Per 10, 42.50

Fir Nordman—A fine evergreen with lustrous deepgreen foliage and symmetrical, which should be used more extensively in landscape plantings, screenings and backgrounds.

12 to 18 in.	xx Each, \$2.50	Per 10, \$22.50
18 to 24 in.	xxx Each, 3.25	Per 10, 30.00

Hemlocks

The Hemlocks are remarkable, graceful, beautiful trees with drooping branches, delicate dark foliage, distinct from all other trees. The Hemlock like a moist, cool place. They will stand partial shade, and they don't have the stiff appearance of most evergreens. They can be kept sheared as a hedge, of which they make a beautiful specimen similar to Eng. Yew.

Hemlock Canadensis, (Canadian Hemlock)—Very hardy pyramidal form, dark rich green dense foliage. Graceful habit and adaptable for trimming into a hedge form, making it a valuable plant. Also good for group planting.

12 to 18 in. xx, Each, \$2.25 Per 10, \$20.00
 18 to 24 in. xxx, Each, 3.00 Per 10, 27.50
 2 to 2½ ft. xxxx, Each, 4.00 Per 10, 37.50

Juniper

The Juniper is the family of evergreens of great beauty, that is adapted to so many uses and purposes. The Pfitzer's a low growing varieties can be used for foundation plantings. While the creeping kinds can be used on terraces, etc. Then the tall stately Cedars can be used as specimens or a background planting to give the landscape a sky line beauty. Our Junipers are grown from selected seed, some varieties from the finest of cuttings, therefore you can feel assured that any of these trees that you receive from us are of the highest type and finest color.

Juniper Chinensis—Just of late years the popularity of this great Juniper has become in general use. It grows to the height of 15 to 20 feet with a diameter of 3 feet. The color is very glossy and bright green. The berries are small sometimes the size of currants of the glossy brown color when ripe. Is extremely hardy in the northern and southern states.

12 to 15 in. xx, Each, \$2.50 Per 10, \$22.50
 15 to 18 in. xxx, Each, 3.25 Per 10, 30.00
 18 to 24 in. xxx, Each, 4.25 Per 10, 40.00

Juniper Chinensis Pyramidalis—This is a tall slender growing Juniper, similar to the Juniper Chinensis. The color ranges from blue to green, and is very useful as a specimen on the lawn. It will grow in full sun and must have good drainage.

12 to 18 in. xx, Each, \$3.00 Per 10, \$28.50
 18 to 24 in. xx, Each, \$4.00 Per 10, 37.50
 2 to 3 ft. xxxx, Each, 5.00 Per 10, 48.50

Juniperus Hibernica (Irish Juniper)—A distinct and beautiful form of this Juniper makes it very desirable for home plantings. The foliage is a fine glossy green and the tree retains its columnar shape, much used in cemetery plantings.

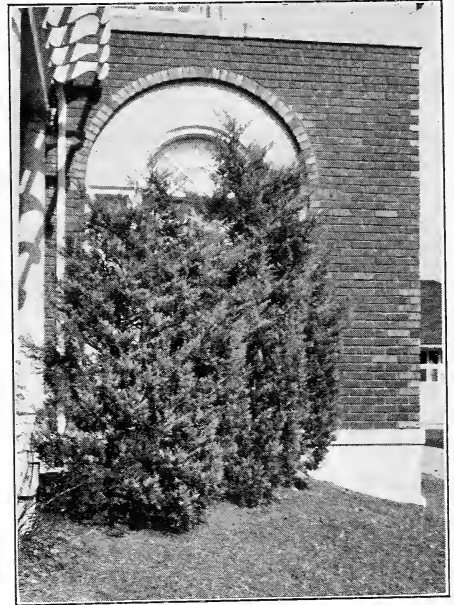
12 to 18 in. xx, Each, \$1.75 Per 10, \$15.00
 18 to 24 in. xxx, Each, 2.00 Per 10, 18.00
 2 to 2½ ft. xxx, Each, 2.75 Per 10, 25.00

Juniperus Horizontalis—Known as Hills Waukegan Juniper. Low growing, with long branches, deep steel blue foliage trailing along the ground. In winter the color changes to a rich purple, very useful in a rock garden and along sloping banks.

10 to 12 in. xx, Each, \$1.85 Per 10, \$17.50
 12 to 18 in. xx, Each, 2.25 Per 10, 20.00
 1½ to 2 ft. xxx, Each, 3.25 Per 10, 30.00

Juniperus Communis Suecica (Swedish Juniper)—This is an old favorite columnar form, grayish green prickly needles. A compact grower, it seldom reaches the height of 10 to 12 feet. Stands trimming well and a good tree for formal use.

12 to 18 in. xx, Each, \$1.75 Per 10, \$15.00
 18 to 24 in. xx, Each, 2.00 Per 10, 18.00
 2 to 2½ ft. xxx, Each, 2.75 Per 10, 25.00
 2½ to 3 ft. xxx, Each 3.50 Per 10, 32.50



JUNIPER GLAUCA

Juniper Glauca or Silver Red Cedar—This is one of the Junipers that holds its glossy rich blue color throughout the winter, and makes it so valuable a tree on the landscape planting. They thrive over a wide range territory. Perfectly hardy, in central Minnesota. Does well in New Orleans. This makes it a very valuable tree for your evergreen plantings.

12 to 15 in., Each, \$2.25 Per 10, \$20.00
 15 to 18 in. xx, Each, 3.00 Per 10, 28.00
 18 to 24 in. xx, Each, 4.00 Per 10, 38.00
 2 to 2½ ft. xxx, Each, 5.00 Per 10, 48.00

Juniper Stricta (Greek Cedar)—This beautiful variety forms a tall dense narrow conical head, and it tapers gradually from the ground to a sharp terminal point, is a fine glossy color. It grows very slow and is adapted for foundation planting also in rock gardens.

10 to 12 in. xx, Each, \$2.00 Per 10, \$17.75
 12 to 18 in. xx, Each, 3.00 Per 10, 27.50
 18 to 24 in. xx, Each, 4.00 Per 10, 38.00

Juniper Sabina (Savin Juniper)—This is a low, many branched evergreen, not growing over two or three feet high. Its branches are short and heavily set with tuft foliage.

8 to 10 in. x, Each, \$1.00 Per 10, \$ 9.50
 10 to 12 in. xx, Each, 1.50 Per 10, 13.50
 12 to 18 in. xx, Each, 2.25 Per 10, 20.00

JUNIPERS (Continued)

Juniperus Sabina, Tamariscifolia—This has unusual fine foliage thereby gets its name, Tamarix Juniper. It is similar to the other creeping Junipers, but is somewhat a smaller grower. Its habit is vigorous, and forms a compact perfect map of light green color which it retains throughout the season.

- 8 to 10 in. xx, Each, \$1.00 Per 10, \$ 9.50
- 10 to 12 in. xx, Each, 1.50 Per 10, 13.50
- 12 to 18 in. xx, Each, 2.50 Per 10, 22.50

Juniper Cannarti—This tree is a pyramidal compact grower, seldom reaching 15 to 20 feet in height, and by a little trimming each spring, can be kept to any desired height wanted. Its foliage is rich green and bears blue and silver berries, which are greatly enjoyed by the birds.

- 8 to 12 in. xx, Each, \$3.50 Per 10, \$32.50
- 12 to 18 in. xx, Each, 4.50 Per 10, 42.50
- 18 to 24 in. xxx, Each, 5.50 Per 10, 52.50

Juniper Shotti—Schott Red Cedar. This evergreen grows in pyramidal form similar to the Red Cedar. It has a light yellowish green color, which does not change in winter. It also stands trimming well, its growth is compact and symmetrical.

- 12 to 18 in. xx, Each, \$3.50 Per 10, \$32.50
- 18 to 24 in. xx, Each, 4.50 Per 10, 42.50
- 2 to 2½ ft. xxx, Each, 5.50 Per 10, 52.50

Pines

The pine family consists of Evergreens embracing about forty species, and are found grown in the warmest to the coldest parts of the country. They make admirable lawn specimens, and lend themselves well to drooping. Our Pine are grown carefully from selected seed and will give you complete satisfaction in your planting.

Autsrian Pines—The leaves on this pine are from four to five inches, and of a deep rich green color. Sometimes known as the black pine. This is the one evergreen that will stand coal gas and the smoky atmospheres of the cities. Does well on the seashore and is one of the most useful of the pine tree family. Under favorable conditions will grow 12 to 18 inches per year.

- 12 to 15 in. x, Each, \$1.25 Per 10, \$10.00
- 15 to 18 in. xx, Each, 1.75 Per 10, 15.00
- 18 to 24 in. xx, Each, 2.25 Per 10, 20.00
- 2 to 2½ ft. xxx, Each, 4.00 Per 10, 37.50

White Pine (Pinus Strobus)—This is the largest of all the pine trees native to the eastern part of the United States. It easily adapts itself to both moist and dry soil. Can endure considerable shade when young, but when it becomes older requires full light for its development. It grows rapidly, 15 to 18 inches a year, and a wonderful tree for tall background. Our trees are several times transplanted, and will make a rapid growth for you in your plantings.

- 12 to 18 in. xx, Each, \$1.75 Per 10, \$15.00
- 18 to 24 in. xx, Each, 2.25 Per 10, 20.00
- 2 to 2½ ft. xxx, Each, 4.00 Per 10, 37.50
- 2½ to 3 ft. xxx, Each, 5.00 Per 10, 47.50



JUNIPER PFITZERIANA

Juniper Pfitzeriana—Of all the Junipers, here is the one that no doubt is one of the hardiest. It was originated in Germany many years ago, and its great popularity is due to the fact that it will thrive under almost any conditions of soil or exposure. It will grow to reach about four feet in height and sometimes five feet in diameter. The foliage varies from blueish to deep green, and holds its color throughout the season. It can be used in the foundation plantings as well as groupings.

- 12 to 15 in. xx, Each, \$2.00 Per 10, \$17.50
- 15 to 18 in. xx, Each, 2.50 Per 10, 22.50
- 18 to 24 in. xx, Each, 3.00 Per 10, 27.50
- 2 to 2½ ft. xxx, Each, 4.00 Per 10, 37.50
- 2½ to 3 ft. xxx, Each, 5.00 Per 10, 45.00

Wonderful New Evergreen

Juniper Communis Depressa Plumosa—A most satisfactory low growing variety which grows about 18 inches off the ground. Its outstanding feature is its color. As soon as frost comes it changes to a rich purplish bronze color which makes it one of the coming evergreens in landscape planting, highly recommended for rock gardens. Be sure and include some of these specimens on your home grounds.

- 12 to 15 in. Each, \$2.25
- 15 to 18 in. Each, 3.00

Our Favorite Evergreen Collection for Lawn and Foundation Plantings

- 1 **Pyramidalis Arbor Vitae** 2½ to 3 ft. \$ 3.75
- 1 **Retinaspora Plumosa Aurea** 2 to 2½ ft. 3.75
- 1 **Dwarf Juniper** 12 to 15 in. 2.25
- 1 **Pfitzeriana Juniper** 2 to 2½ ft. 4.00
- 1 **Arbor Vitae Berkman's Golden** 18 to 20 in. 3.50

\$17.25

One each as above by freight or express, not prepaid for **\$14.95**

PINES (Continued)

Mugho Pine—This is the one wonderful dwarf pine. Never grows over 4 to 5 feet tall, sometimes spreads 6 to 8 feet in diameter, can be kept smaller by shearing each year. The color is a deep green in summer and winter, it is free from insects or pests of any kind and will grow in almost any location. It will stand a little shade or grow on the north side of buildings. It is the one evergreen that you will want to use in your foundation planting.

- 10 to 12 in. xx, Each, \$2.50 Per 10, \$24.00
- 12 to 15 in. xx, Each, 3.25 Per 10, 30.00
- 15 to 18 in. xx, Each, 4.25 Per 10, 40.00

Retinasporas

Retinasporas or Chamaecyparis—These belong to the Japanese Cypress family and embraces some of the most beautiful evergreens in cultivation. They are of such a diverse growth that you can select a Retinaspora for any place or purpose. They are stately, an individual and strikingly effective in groups and colors varying from green to blue, golden, etc.

Retinaspora Plumosa—Is useful for hedges and formal work. Is of a tall pyramidal shape with fine green foliage. It grows into wonderful specimen trees.

- 12 to 15 in. Each, \$1.25 Per 10, \$10.50
- 15 to 18 in. xx, Each, 1.75 Per 10, 16.00
- 18 to 24 in. xx, Each, 2.25 Per 10, 20.50
- 2 to 3 ft. xxx, Each, 3.50 Per 10, 32.50

Retinaspora Plumosa Aurea—Very hardy similar to Retinaspora Plumosa except it has a rich golden color, which it holds throughout the summer. For specimen or hedges, or for color in landscape planting this variety is desirable.

- 12 to 15 in. x, Each \$1.25 Per 10, \$12.00
- 15 to 18 in. x, Each, 1.75 Per 10, 16.00
- 18 to 24 in. x, Each, 2.25 Per 10, 20.50
- 2 to 2½ ft. xx, Each, 3.75 Per 10, 35.00

Retinaspora Pisifera—The foliage of this resembles the Arborvitae and the tree grows decidedly erect with very graceful branches. When sheared the foliage develops. The true color makes a very desirable specimen on the lot.

- 12 to 15 in. x, Each, \$1.15 Per 10, \$10.00
- 15 to 18 in. x, Each, 1.65 Per 10, 15.00
- 18 to 24 in. x, Each, 2.00 Per 10, 18.00
- 2 to 2½ ft. xx, Each, 3.00 Per 10, 28.00
- 2½ to 3 ft. xx, Each, 4.00 Per 10, 38.00

Retinaspora Pisifera Aurea—Similar to the above variety except the foliage at the edge is golden yellow. Very desirable for color contrast in group planting.

- 12 to 15 in. x, Each, \$1.25 Per 10, \$12.00
- 15 to 18 in. x, Each, 1.75 Per 10, 16.00
- 18 to 24 in. x, Each, 2.25 Per 10, 20.50
- 2 to 2½ ft. xx, Each, 3.50 Per 10, 32.50
- 2½ to 3 ft. xx, Each, 4.25 Per 10, 40.00

Retinaspora Lutescens—This is a dwarf variety suitable for rock garden work. It is a very scarce variety and deserves a place in the rockery.

- 6 to 8 in. x, Each, \$1.65 Per 10, \$15.00
- 8 to 10 in. x, Each, 2.00 Per 10, 18.50

Retinaspora Squarrosa Veitchii (Japanese Silver Cypress)—One of the prettiest of the Retinaspora plantings. Pyramidal in habit, and retains its fleecy silver blue foliage throughout the year. Very desirable as specimen on the lawn or for color effect in blue planting.

- 12 to 15 in. x, Each, \$1.50 Per 10, \$13.50
- 15 to 18 in. x, Each, 1.85 Per 10, 17.50
- 18 to 24 in. x, Each, 3.00 Per 10, 27.50
- 2 to 2½ ft. xx, Each, 3.75 Per 10, 35.00



COLORADO BLUE SPRUCE

Spruce

Among the Spruces there are some of the most useful as well as ornamental trees of the conifer family. They are mostly tall, conical or pyramidal in shape, but some dwarf forms. They will thrive in most any good, well-drained soil, and are the hardiest of most evergreens.

Spruce Alba or White Spruce—This spruce is especially for tall background shelter, wind-break, and tall screens. It is fairly rapid in growth with light green foliage and lightly tinged with blue.

- 12 to 18 in. x, Each, \$1.25 Per 10, \$11.50
- 18 to 24 in. x, Each, 1.75 Per 10, 15.00
- 2 to 2½ in. x, Each, 3.00 Per 10, 28.50

SPRUCE (Continued)

Black Hills Spruce—This is the hardiest of all Spruces symmetrical, compact and bushy in growth. The lower branches hang closely to the ground. When fully matured it reaches 25 to 40 feet in height and requires 10 to 12 feet to spread its branches. It is better used as an individual specimen, or background for borders, and requires sun the greatest part of the day.

8 to 12 in. x, Each, \$1.50	Per 10, \$12.50
12 to 18 in. x, Each, 3.00	Per 10, 28.00
18 to 24 in. xx, Each, 4.00	Per 10, 38.00

Norway Spruce—This is one of the spruces that is quite valuable on account of its rapid growth, its thriftiness and heavy deep green foliage makes a wonderful hedge plant, used as windbreak, specimens on the lawn and for a picturesque touch to the landscape.

10 to 15 in. x, Each, \$.75	Per 10, \$ 6.50
15 to 18 in. xx, Each, 1.25	Per 10, 11.50
18 to 24 in. x, Each, 1.50	Per 10, 13.50
2 to 3 ft. xxx, Each, 2.50	Per 10, 22.50

Colorado Blue Spruce—This is the beautiful, handsome tree on the Rocky Mountain trail. It has regal grace, stern, and unyielding in our line. Hardy as an Oak among the conifers and no state in the Union where it will not thrive. Its steel blue foliage glistening throughout summer and winter make it the best tree for a specimen on the lawn. Our trees are grown from selected seed from trees in northern Colorado. This guarantees you the true Colorado strain.

10 to 12 in. x	Each, \$3.50
12 to 15 in. xx	Each, 5.50
15 to 18 in. xxx	Each, 6.50
18 to 24 in. xxx	Each, 7.50

Koster Spruce—This is a grafted variety and undoubtedly is the bluest of all evergreens. Rather high in price but a valuable evergreen as a specimen on the lawn.

10 to 12 in.	Each, \$5.00
12 to 15 in.	Each, 7.50
15 to 18 in. x	Each, 11.00
18 to 24 in. x	Each, 15.00

Yews

These are a family of wonderful evergreens with deep rich color. They combine qualities of extreme hardiness and adaptability to various planting conditions. It is one of the few evergreens that thrives in a shady location. The Yews have all the sterling qualities of the conifer family minus any undesirable features.

Taxus Cuspidata—Has a semi-upright form, faster growing than brevifolias. Foliage is a brownish green.

12 to 15 in. x	Each, \$2.75
15 to 18 in. x	Each, 4.00
18 to 24 in. xx	Each, 5.50

Taxus Cuspidata Capitata—This is an upright yew of tree form, with strong lateral branches. Can be trimmed to a compact pyramidal shape to take the place of boxwood or used as an individual tree.

12 to 15 in. x	Each, \$3.00
15 to 18 in. x	Each, 3.75
18 to 24 in. xx	Each, 4.50

Some of the uses of Evergreens in the landscape is the dwarf and slow growing forms which makes it possible to plant them around suburban homes and on grounds of limited area. Evergreens are ideal for foundation plantings. If care is used in their selection. Our Landscape Department will help you select the proper varieties that add beauty both winter and summer and take away that wintry chill that you get from the barren, unplanted area around the home.

EVERGREEN SHRUBS

These retain their foliage throughout the year. Among them are the most beautiful plants. They work so well in the garden or landscape planting.

Azalea, Amoena—This is a bushy, compact and perfectly hardy shrub. The leaves are dainty, shiny glossy green, and completely covered in spring with rosy purple flowers, useful for edging and Rhododendron planting, and other evergreen groups.

8 to 10 in. B & B, Each, \$1.50	Per 10, \$13.50
10 to 12 in. B & B, Each, 2.00	Per 10, 18.00
12 to 15 in. B & B, Each, 2.50	Per 10, 22.50

Azalea, Hinoderagri—A bright scarlet thorn of the well-known charming azalea Amoena, but far surpassing yet in brilliancy and beauty. A profused bloomer, the foliage is round and evergreen.

6 to 8 in. .. Each, \$1.50	Per 10, \$13.50
8 to 10 in. .. Each, 1.75	Per 10, 15.00
10 to 12 in. .. Each, 2.50	Per 10, 24.00
12 to 15 in. .. Each, 3.00	Per 10, 28.00

Azalea Kempferi—A large beautiful fiery red flower. Grows tall and bushy and is absolutely hardy.

6 to 8 in. .. Each, \$1.50	Per 10, \$13.50
8 to 10 in. .. Each, 2.00	Per 10, 18.00
10 to 12 in. .. Each, 2.25	Per 10, 20.00
12 to 15 in. .. Each, 2.50	Per 10, 22.50

Azalea Macrantha—This is a large single salmon red. Resembles a Hinodegire, but very late. A compact flat, quick grower, with dark green foliage.

6 to 8 in. .. Each, \$2.00	Per 10, \$18.00
8 to 10 in. .. Each, 2.25	Per 10, 20.00
10 to 12 in. .. Each, 2.50	Per 10, 22.50
12 to 15 in. .. Each, 4.75	Per 10, 45.00

Azalea, Benigiri—Leaves are evergreen, rather narrow, and slightly concave. Growth nice compact and the flowers are deep bright red or almost fiery.

6 to 8 in. .. Each, \$1.25	Per 10, \$10.00
8 to 10 in. .. Each, 1.50	Per 10, 13.50
10 to 12 in. .. Each, 2.00	Per 10, 18.00
12 to 15 in. .. Each, 3.00	Per 10, 27.50

Azalea Hinomayo—This is a new variety and of great merit. Resembles *Hinodigira* in habit and general outline, and flowers about the same time. The color is clear, soft shade of pink, almost evergreen.

6 to 8 in. . .	Each, \$1.50	Per 10, \$13.50
8 to 10 in. . .	Each, 1.75	Per 10, 15.00
10 to 12 in. . .	Each, 2.25	Per 10, 20.00
12 to 15 in. . .	Each, 3.00	Per 10, 27.50

Azalea Superba—A beautiful dark purple shading. Darker towards the inside center, while the outside purple shades to red and has small, dark green, glossy foliage.

6 to 8 in. . .	Each, \$1.50	Per 10, \$13.50
8 to 10 in. . .	Each, 2.00	Per 10, 18.00
10 to 12 in. . .	Each, 2.25	Per 10, 20.00
12 to 15 in. . .	Each, 2.50	Per 10, 22.50

Azalea Yodogawa—A semi-evergreen type of Japanese Azalea. The flowers are purplish pink and brilliant. Blooms early. Free, flowering, produces flowers in abundance.

6 to 8 in. . .	Each, \$1.50	Per 10, \$13.50
8 to 10 in. . .	Each, 2.00	Per 10, 18.00
10 to 12 in. . .	Each, 2.25	Per 10, 20.00
12 to 15 in. . .	Each, 2.50	Per 10, 22.50

Azalea Yaye-giri—This is a beautiful salmon red, semi-double flowers and produce in abundance. The foliage is narrow and of a warm intense green. Most showy of the Azaleas.

6 to 8 in. . .	Each, \$1.75	Per 10, \$15.00
8 to 10 in. . .	Each, 2.50	Per 10, 22.50
10 to 12 in. . .	Each, 2.75	Per 10, 25.00
12 to 15 in. . .	Each, 3.00	Per 10, 27.50

Soil for Azalea

Azalea require a light garden loam, mixed with leaf mold decayed sod. They dislike lime in the soil, thereby granulated peat moss is very beneficial to their growth.

Eunomymus Japonicus

Japanese Eunomymus—A very useful decorative shrub with lustrous deep, green leaves. It has a bushy, upright habit. Needs winter protection north of the Mason and Dixon Line. Excellent for window box planting.

8 to 10 in. . .	Each, \$1.00	Per 10, \$ 9.00
12 to 15 in. . .	Each, 1.25	Per 10, 10.00

Ilex Crenata, Japanese Holly—Has small oval green leaves, about one half inch long. Rapid grower, forming a dense compact bush, which can be shaped like boxwood.

12 to 15 in. . .	Each, \$2.75	Per 10, \$25.00
15 to 18 in. . .	Each, 3.00	Per 10, 27.50

Ilex Microphylla—Small leaf Japan Holly. This evergreen has smaller leaves and more hardy than *Ilex Crenata*. Can be used in great many places in your planting.

12 to 15 in. . .	Each, \$2.75	Per 10, \$25.00
15 to 18 in. . .	Each, 3.00	Per 10, 27.50

Ilex Opaca (American Holly)—A slow growing tree having short spreading branches with dark shiny, thorny leaves. Has bright red berries in winter. The American holly is perfectly hardy if given a position sheltered from severe winter winds.

18 to 24 in. . .	Each, \$4.75	Per 10, \$45.00
2 to 2½ ft. . .	Each, 5.50	Per 10, 52.50

Privet Evergreens Lucidium—This is the evergreen privet. Very attractive with rich, glossy leaves, not hardy in the north. Sometimes called the wax leaf privet. Useful with evergreen plantings.

10 to 15 in. . .	Each, \$1.25	Per 10, \$12.00
15 to 18 in. . .	Each, 2.00	Per 10, 17.50

Abelia Grandiflora—See page 6.

Boxwoods

Dwarf English (Buxus Semperviren Suffruticosa)—This is the true north English boxwood used for edging, and the slowest growing of all the boxwood family.

6 to 8 in. extra heavy, Ea.	\$.60	Per 10, \$5.50
8 to 10 in. extra heavy, Ea.	1.00	Per 10, 8.50

Boxwood Semperviren—Bush form boxwood. Slow growing, having a rich, deep color, which makes a fine specimen.

8 to 12 in. extra heavy Ea.	\$.90	Per 10, \$ 8.00
12 to 15 in. extra heavy Ea.	1.25	Per 10, 11.00
15 to 18 in. extra heavy Ea.	1.75	Per 10, 15.00
18 to 21 in. extra heavy Ea.	2.25	Per 10, 20.00

LARGE SPECIMEN BOXWOOD

We have large specimen boxwood plants arranging in size from 24 inches up to 5 to 6 feet diameter. These are fine specimens, well-formed, and dug with heavy balls of earth. Write us for special prices if interested in unusual large sizes.

Pachysandra (Japanese Purge)—One of the most valued evergreen ground covers for dense shade. Has a low trailing habit. Seldom grows over 6 to 8 inches high. It has fine glossy light green leaves in abundance with greenish white flowers in May and June.

1 year plants . . .	Each, \$.25	Per 10, \$2.25
2 year plants . . .	Each, .50	Per 10, 4.75

Pyracantha Coccinea Lalandii—Lelands firethorn. White flowers in large clusters followed by brilliant orange colored berries. The leaves are rich green, a splendid evergreen for almost any sunny location and makes a beautiful specimen plant or a splendid hedge.

3 in. pots . .	Ea. \$1.25	4 in. pots . .	Ea. \$2.00
----------------	------------	----------------	------------

Our Landscape Department will assist you in arranging your plantings and tell you how to prepare your soil, for Azaleas, Rhododendrons, Evergreens, Bulbs, and are willing to help you succeed with your plants. They are men who know how—20 years in this kind of work. Write Department L and a prompt reply you will receive.



Rhododendron

RHODODENDRONS are the handsomest of the broad leaved evergreens, and not so hard to grow as many plant lovers think. The varieties we offer are absolutely hardy, and will stand our most severe winters and summer, providing they are properly planted and taken care of. The soil is one of the most important factors and the drainage should be well provided for, and protected from the north and west winds. Write us for special circular how to plant and care for Rhododendrons, free with your order.

Rhododendron Catawbiense—This is very attractive variety and is the parent plant of the majority of our Hybrids, is very hardy, being a native of this country. For groups in mass plantings should be used more extensively. A free bloomer and flowers are borne in large round trusses, of delicate pink shade, the early part of June.

1½ to 2 ft. Each, \$3.75 Per 10, \$35.00
 2 to 2½ ft. Each, 4.75 Per 10, 45.00

Rhododendron Maximum—This variety is used for massing. Thrives well in shade. Perfectly hardy. The flowers vary in color from pure white to delicate shade of pink, are produced in great profusion. Its a rather late variety. Comes in bloom when the hybrid varieties are gone out.

1½ to 2 ft. Each, \$2.50 Per 10, \$20.00
 2 to 2½ ft. Each, 3.00 Per 10, 25.00
 2½ to 3 ft. Each, 4.00 Per 10, 35.00

Rhododendrons Carolinianum—Leaves rather small. Dark green above and narrow. Covered with brownish dots beneath, clusters of clear rose pink flowers in May. Very hardy.

1 to 1½ ft. Each, \$2.50
 1½ to 2 ft. Each, 3.00
 2 to 2½ ft. Each, 3.50

Rhododendron, Pink Pearl—A new hybrid Rhododendron. magnificent, bright pink. Only hardy south of Washington, D. C. Should be protected as far north as Mason and Dixon line. Grows to be rather high, 8 to 9 feet.

12 to 15 inches Each, \$4.50

Rhododendron Hybrids—We are growing a large assortment of hybrid rhododendrons which consist of some of the very good introductions. If interested, write for our list.

Hardy Herbaceous and Alpine Plants

THESE is an unlimited amount of hardy perennials to choose from, and in choosing one should consider where they are to be planted. I like my perennials arranged in groupings and in masses and the colors so arranged so as to form a pleasing combination, and at the same time a continuation of bloom. We have many varieties that we do not list in this catalogue, for the reason that they are not well known. Our perennials are grown with the utmost care. Our soils are prepared with the proper amount of vegetable matter so as to produce a good root system, which is very essential for the success with perennials. The majority of our perennials are grown in beds under a high state of cultivation, and your order is dug fresh the day it is shipped.

Achillea, The Pearl—Grows about two feet high. Blooms about June and August. Fine for cutting and bouquets. Nice plants, each 20c, large plants 25c each.

Alyssum, Savatite Compactum (Basket of old)—Grows 1 foot, May, June. Produces masses of golden flowers very early. May be planted effectively with Arabis. Nice plants, each 20c; large plants, each 25c.

Anchusa (Italica, Dropmore Variety)—Five feet, June-July. Beautiful gentian blue flowers; one of the best perennials. Nice plants, each 20c; large plants, each 25c.

Anchusa, Ballerri—This is a dwarf variety. Fine blue flowers and very useful in rock gardens. Nice plants, each 20c; large plants 25c.

Arabis Alpina—A most useful hardy rock plant, each 20c; large plants 25c.

Arabis Alpina—A most useful hardy rock plant. Makes a pleasing contrast with Alyssum saxatile. Grows six inches high, with pure white flowers. Each 20c; large plants 25c each.

Aquilegia (Columbine) Chrysantha—Grows three foot. Yellow. Long-spurred. Nice plants. Each 20c; large plants each 25c.

Coerulea (Rocky Mountain Columbine)—Grows 3 feet. One of the most beautiful of our native American flowers. Sepals, deep blue; petals, white. Nice plants, each 20c; large plants each 25c.

Coerulea Rosea (Rose Queen)—Grows 2½ feet. Beautiful flowers of light to dark rose with white center and yellow anthers. A most delicate combination of colors. Nice plants, each 20c; large plants, each 25c.

Mrs. Scott Elliott's Strains of longspurred Hybrids. The blooms are of large size and the spurs are very long. The colors range through shades of lavender, mauves, blues, pinks, purples, whites, creams, yellows, reds, etc. The finest strain of all the Columbines. Nice plants, 20c each; large plants 25c each.

Aubrietia (Rock Cress)—One of the daintiest and most beautiful of all dwarf creeping plants for carpeting, bedding, or rockeries. Large flowered Hybrids. The choice strain. Nice plants, 20c each; large plants, 25c each.

Aubrietia Bougainvillei—Dark blue, grows about six inches tall. Very useful in the rockery. Nice plants, 20c each; large plants, 25c each.

Baptisia Austalis (False Indigo)—Dark blue flowers, that bloom in June. Fine as a hardy border for the flower garden. Foliage very attractive. Nice plants, 20c each; large plants, 25c each.

Bleeding Heart, or Dicentra, Spectabilis—The old fashioned favorite. Its long racemes of graceful, heartshaped flowers, are always attractive. Beautiful pink in color, and perfectly hardy. Each, 50c.

Boltonia Latisquama—Aster-like, hardy plants, useful for cutting. Delicate pink flowers. Fine for in the border where a tall growing perennial is wanted. Nice plants, 20c each; large plants, 25c each.

Carnations—Hardy border garden varieties. We have the following: Grenadin Red, Pink and White. These are a new strain from France, and you will be pleased with their results. Nice plants, 20c each; large plants, 25c each.

Campanula - Bellflower

THIS family includes the famous Canterbury Bells, the Blue Bells of Scotland, and the Carpathian Hare Bells and they all deserve a place in your garden.

Campanula Carpatica—Grows nine inches, blooms in July and are pretty blue dwarf plants, very useful in the rock gardening or as an edging. Nice plants, 15c each; large plants, 25c each.

Latifolia Macrantha—Grows three feet. Blooms June and July. Very handsome enormous, drooping bells of fine satiny purple shade. Nice plants, 20c each; large plants, 25c each.

CAMPANULA-BELLFLOWER (Continued)

Canterbury Bell, Medium, Single Blue—These grow 25 to 30 inches high and the plants are covered in bloom with large single blue bells. It is a biennial, but well repays the little care that it takes. If you want bloom in June in your garden, plant this variety. Nice plants, 15c each; large plants, 25c each.

Canterbury Bell, medium, single pink—The same as above except the color is pink. Nice plants, 15c each; large plants, 25c each.

Double Medium Blue—Same as the single except the bells are double. Price, nice plants, 20c each; large plants, 25c each.

Double Medium Rose—Same as the double blue except color, which is a fine deep rose. Nice plants, 20c each; large plants, 25c each.

Rotundifolia—Blue Bells of Scotland. Grows one foot blooms from June to August. The flowers are very dainty. Are produced on long slender stems, and are clear blue. Fine for in rock garden and on steep slopes. Nice plants, 20c each; large plants, 25c each.

Candytuft, or Hardy Iberis—Sempervirens, a very dwarf variety and covered with a sheet of white flowers in early spring and particularly adopted to the rock garden. Nice plants, 20c each; large plants, 25c each.

Cerastium Tomentosum (Snow in Summer)—Grows four inches. Silvery white foliage, covered with snow white flowers in early summer. Nice plants, 20c each; large plants, 25c each.

Chrysanthemum—Mrs. Lothian C. Bell. This is an unusual large variety of Shasta Daisy Chrysanthemum. I prefer it to the Shasta Daisy Alaska. The flowers are large pure white on long stems and beautiful for cutting. Nice plants, 15c each; large plants, 25c each.

Daisy Shasta—(See Chrysanthemum Mrs. Lothian C. Bell).

Coreopsis (Tickseed)—One of the most popular hardy plants. The flowers are a rich golden yellow with a beautiful, graceful bloom. June to October. Nice plants, 15c each; large plants, 25c each.

Convallaria (Lilly of the Valley)—The popular, fragrant flowers of the Lily of the Valley are too well-known to give description. Native clumps, 25c each; imported pips, 15c each; \$1.50 dozen.

Hardy Garden Chrysanthemums—We have the following new varieties which are much improvement over the old fashioned.

Argenteuillais—Scarlet, yellow, early.

Carmelite or (Glory of Seven Oaks)—Early, yellow.

Angelo—Beautiful light pink. Early.

Idolph—Early. A pleasing salmon pink.

Adironda—A fine Bronze, late variety.

Edna—Creamy white, late variety.

Mrs. Phillips—Beautiful single pink, late variety.

October Gold—Rich golden bronze, a late variety.

Indian—A midseason variety. Fine copperish red.

Boston—A beautiful bronzy orange. Mid-season.

Any of the above 35c each, \$3.00 per doz. Extra heavy clumps for immediate effect in landscape planting, \$1.00 each or \$10.00 per doz.

Daphne Cneorum—This is a prostrate evergreen growing shrub, and is one of the aristocrats of the rock garden. Fine for planting around the rocky and pools. It is slow growth and foliage is dark and glossy and evergreen. Flowers, rose pink completely covering the plant in May and again in September. Will stand 10 degrees below zero, but must have good drainage. 6 to 8 in. \$1.00 each. Six for \$5.50.

Delphiniums

WE are large growers of this popular plant, below we are listing the more common varieties, which are still popular and should be planted along with the newer sorts, on the following page you will find the fancy English varieties.

Belladonna Improved—This is an improvement over the old fashioned variety. The flowers are light blue or an excellent shade of turquoise blue. The plants are of strong vigorous habit and bloom all summer.

Bellamosa—This is a dark form of the popular Belladonna, identically except the color is a deep dark blue. Much better than the old variety of Delphinium formosum. The same price as Belladonna. Improved.

- 1 year15c each \$1.50 per doz.
- 2 year20c each 2.00 per doz.
- 3 year clumps35c each 3.00 per doz.

Chinese—A very pretty dark colored variety. The foliage is fine and feathery and the flowers intense gentian blue. Each, 15c; \$1.50 per dozen.

OUR GARDENERS COLLECTION

24 Perennials including the above Delphiniums and an assortment of different varieties listed in this catalogue which will give you bloom all summer long in nice blooming size plants for

Order this collection today. **\$3.70** Postpaid

Hardy English Delphiniums

THESE are the most popular of all the Delphiniums, the plants grow five to seven feet in height, and the bloom spikes are from two to three feet long. This is the one plant that makes the English gardens so popular. Our plants are grown from the seed which we obtain from the English Specialist and it should not be compared with plants produced from seed by the average amateurs. While not all the plants come true to name from seed, the greater part of this fancy seed produces plants true to name. Send us your order for these wonderful Delphiniums and you will be more than pleased with their results. We issue a pamphlet on their culture, which is free with your order, otherwise 10c each.

Admiral Blake—Reddish inner sepals, with edged deep blue black petals. A semi-double, very striking variety. Each, 75c; \$7.50 per dozen.

Amazement—This variety deserves its name, a delicate shade pale blue, similar to the Star of Langport. Flowers are single but very large. Each, 75c; \$7.50 per dozen.

Amos Perry—A fine variety, with sky-blue flowers, tinted with rose. Semi-double. Each, 50c; \$5.00 per dozen.

Dr. Lodwidge—This is a beautiful sky-blue variety, mingled with rose. Flowers are semi-double, and the plant is a robust grower. Each, 75c; \$7.50 per dozen.

Dusky Monarch—Here is the variety that you have always longed for. The flowers are light purple and very large. Two rows of petals, the color of royal mourning, with a striking black center. This is a semi-double variety. You must have some of these plants in your garden. Each, \$1.00; \$10.00 per dozen.

Earl of Ellesmere—A dark pure blue touched with purple here and there. Has large black eye, single flowers. Very striking. Each, 75c; \$7.50 per dozen.

Evening Star—A pale blue and pink variety with a curious spreading black center, semi-double flowers. A giant grower. Each, \$1.00; \$10.00 per dozen.

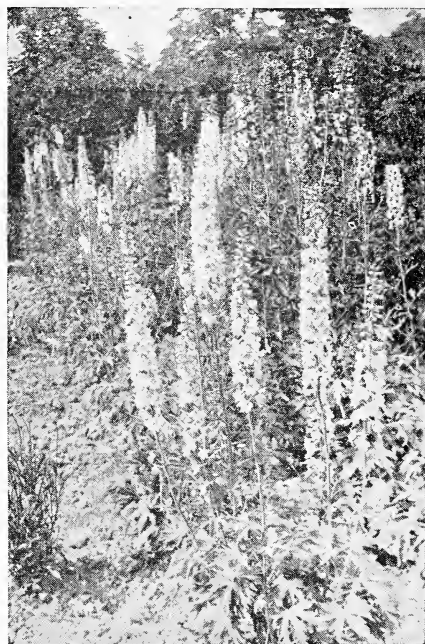
Geraldine Kelway—Pale azure blue of large size. Single white eye. This is one of the outstanding English varieties. Each, \$1.00; \$10.00 per dozen.

James William Kelway—A lovely, deep and plum purple, with large striking white eye. Semi-double flowers on long stem. One of the leaders. Each, \$1.00; \$10.00 per dozen.

Kelways Blue—A beautiful pure coerulean blue with a large white eye. Single flower and profused bloomer. Each, 75c; \$7.50 per dozen.

Kelway's Goliath—A bright blue variety, edged rose with large black eye and yellow beard. Single flowered. Each, 50c; \$5.00 per dozen.

Kelways Magnificent—A very deep violet and richest plum color. Large white center and enormous flowers produced on extra long spikes. Each, 75c; \$7.50 per dozen.



ENGLISH DELPHINIUM

Kelway's Master Piece—The flowers are light reddish purple, and reflected eight white petals. Inlaid around the inner petals. This is surely a masterpiece.

Each, 75c; \$7.50 per dozen.

Kelways Splendour—The flowers are pale sky-blue, long, with a large brown eye, covered with yellow beard. Semi-double, and robust grower.

Each, 75c; \$7.50 per dozen.

Ladye Faire—A most delicate milky lavender and sky-blue flowers, with large semi-double with two rows of sepals. A tall grower, very showy.

Each, 75c; \$7.50 per dozen.

Lieutenant Warneford V. C.—The flowers of this variety are a deep bright velvety blue. It has the distinction of having no eye, and are semi-double.

75c each; \$7.50 per dozen.

Locarno—This is one of the brightest blue varieties, shaded violet with a white eye. Extraordinarily effective. Single flowers. This is sure a rare Delphinium.

\$1.00 each; \$10.00 per dozen.

DELPHINIUM (Continued)

Lord Curson—Colors sky-blue and the flowers are heavily edged pink, a black and yellow eye, makes this variety very showy. Single flowers and good bloomer.

50c each; \$5.00 per dozen.

Mars—For deep color this is hard to beat. A violet blue with black eye, and yellow hairs. Single flowered.

50c each; \$5.00 per dozen.

Monarch of All—This is the king of them all, the richest violet and purple, with large brown eye. The flowers are large and semi-double. A striking variety.

75c each; \$7.50 per dozen.

Mrs. James Kelways—This is a beautiful sky-blue variety with pink inner petals, which are very pronounced. Large white eye and the flowers semi-double.

75c each; \$7.50 per dozen.

Norah Ferguson—This is a rare one in its color. A beautiful pale blue, blended with soft pink, a wonderful variety. The flowers are double and a good grower. If you like colors, here is one that will please you.

75c each; \$7.50 per dozen.

Queen Mary—This is an exquisite shade of silvery nemophila blue, with a white eye, which makes it very striking.

50c each; \$5.00 per dozen.

Queen of the Sky—This is a lovely sky-blue variety. The sepals are tinged pink, black petals, and large pips. Single flowers.

75c each; \$7.50 per dozen.

Rev. E. Lascelles—This is a fine variety of one of the older sorts, deep purple blue flowers, with white center. It is a good grower and free bloomer.

35c each; \$3.50 per dozen.

Sir Wroth Lethbridge—A late introduction, the deep blue inner rows of spreading petals with a purple and white center. A very showy plant for in your borders.

75c each; \$7.50 per dozen.

Smoke of War—This is the deepest, reddest, violet and purple of all the delphiniums. It has a large black center, which is quite pronounced. The flowers are semi-double and the plant is a gigantic grower.

\$1.00 each; \$10.00 per dozen.

Star of Langport—Here is a delicate shade for delphiniums. The flowers are pale sky-blue, with a large white eye. Are single and a profused bloomer.

\$1.00 each; \$10.00 per dozen.

X-Ray—These flowers are light blue and are shaded rose, with a black eye and large pip. Single flowers.

50c each; \$5.00 per dozen.

Delphinium, Blackmore and Langdon Strain—In this strain you will get many choice selections which are equal to some of the English named varieties. The plants grow to be 4 to 5 feet high, and produce long spikes of flowers of various colors. Our plants are grown from seed direct from the originator. If you visit our nurseries be sure and ask to see the Blackmore and Langdon strain of Delphiniums.

35c each; 3 for \$1.00; 10 for \$3.00.

Delphinium, Wrexham Strain—These plants are raised from seed from Samuel Wrexham strain of Hollyhoek Delphinium. The flowers are double in most cases, and range in a large assortment of colors. Your garden will not be complete unless you include some of these wonderful plants in your borders.

Each 50c; 3 for \$1.25; 10 for \$3.75.

Our Professional Gardeners Collection of English Delphiniums

12 Plants Your Selection, for \$6.00 postpaid.

Only One Collection to a Customer.

Dianthus Hybrid Garden Pinks

SOME OF THESE ARE THE SPICY FRAGRANT GARDEN PINKS OF OUR GRAND-MOTHER'S DAYS, EXCEPT SOME ARE NEWER VARIETIES, BUT STILL ARE THE FAVORITES FOR OUR GARDEN.

Dianthus Caesius—Very compact in growth and makes a cushion of glaucous leaves from which spring sweet smelling rose colored flowers in May. Fine for the rock garden. Nice plants, 20c each; \$2.00 per dozen.

Deltoides—A beautiful little plant with narrow leaves. The flowers are deep rose color and blooms in great profusion in June and July. A very valuable rockery plant. Nice plants, 20c each; \$2.00 per dozen.

Plumarius—These are the clove pinks with fragrant flowers on long spikes. Handsome, glossy green foliage and comes in a great variety of colors.

15c each; \$1.50 per dozen.

**Please Note:- No Cash Discount
on Our Special Collections**

Dianthus Barbatus --- *Sweet William*

THESE plants produce great masses of bloom of extremely rich and varied colors and the flowers are lasting, fine for cutting. Our plants are produced from Suttons famous seed, of England.

Latifolius Atrococcineus Pl.—A beautiful outdoor Dianthus of deep crimson color. Semi to full double flowers borne on stout stem 15 to 18 inches high.

15c each; \$1.50 per dozen.

Sutton's Pink Beauty—This is a beautiful salmon pink variety which should be grown in every garden. A color that we all long for.

15c each; \$1.50 per dozen.

Suttons Crimson—The richest crimson Sweet William known. Very dark but still a bright color. If you want a bright color here is your choice.

15c each; \$1.50 per dozen.

Suttons Scarlet—This is a true scarlet. The flowers are intense in color almost like the grenadier carnation. A bed in the distance is a striking feature.

15c each; \$1.50 per dozen.

Suttons Fairy—This is a recent introduction. A charming variety with a delicate tinted salmon flowers. A lovely shade all its own. No other like it.

15c each; \$1.50 per dozen.

Our Best Mixture—This includes all of the fine varieties we grow in mixture. If you want a variety of colors, here is your chance to get an assortment at a reasonable price.

15c each; \$1.50 per dozen.

Palustris Blue—Large rich blue flowers with yellow eye. Free flowering and a charming one for damp places.

15c each; \$1.50 per dozen.

Mysotas Pink Bouquet—A new fine variety for bedding and pots. Be sure and try this novelty.

20c each; \$2.00 per dozen.

Funkia or Plantain Lily—The Plantain Lilies are easy to cultivate. Their leaves are broad and massive, which makes them very attractive even when not in flower. Fine for the border. Thrives well in sun or shade.

Coerulea—Broad green leaves with blue flowers in June.

25c each; \$2.00 per dozen.

Subcordata Grandiflora—A very large pure white, lily shaped, fragrant flower which blooms in August and September.

40c each; \$3.50 per dozen.

Variegata—This variety variegated, the flowers beautiful, color blue, fine edging plant.

20c each; \$1.75 per dozen.

Gaillardia (Blanket Flower)—The Gaillardias are the well-known hardy perennials which give us the gorgeous daisy-like flowers of reds and yellows and bloom from June to November. Fine for cutting. Our choice mixed hybrids.

15c each; \$1.50 per dozen.



Digitalis or Foxglove—Giant Shirley. Grows 5 to 6 ft. tall. The flower shoots are over three feet long. Color ranges from white, shell pink and deepest rose. Some are dotted with crimson or chocolate.

20c each; \$2.00 per doz.

Gloxineaflorea—Grows 3 to 4 ft high ;blooms June and July. The colors range from rose to deep purple.

20c each; \$2.00 per doz.

Echinops (Globe Thistle)—Showy thistle-like plants with globular heads of deep metallic blue flowers.

20c each; \$1.75 per dozen.

Forget-me-Nots (Mysotis)—The Forget-me-Nots make beautiful pictures in the garden for early spring. They are charming in the borders, rock garden, and along the water-side. Prefer a little shade.

Dissitiflora—This is a rich blue early flowering variety, where you want a deep color. This is a valuable one.

15c each; \$1.50 per dozen.

WE GROW OUR PERENNIALS DIFFERENT

Our specialist has worked with hardy plants for 25 years. He knows that they must be grown so that they will transplant to your garden and give plenty of bloom. A trial will convince you.

Viola Jersey Gem

The most valuable bedding Viola yet ever introduced. Succeeds well in full sun and good garden soil. Blooms from May to the end of the season. Flowers pure violet. Very fine as a border plant. 35c each; \$3.50 per doz.

Gypsophilia (Baby Breath)—Paniculata, blooms in August to September. Grows 2 to 3 feet high. The flowers are small white which have a beautiful gauze-like appearance. Can be cut and dried for winter bouquets.
20c each; \$1.50 per dozen.

Gypsophilia Repens—This is a beautiful trailing plant, suitable for the rockery, with an abundance of small white and pink flowers in July and August.
20c each; \$1.50 per dozen.

Gypsophilia Bristol Fairy—This is similar to Paniculata except the flowers are large and double, which makes it far superior to any other.
60 each; \$6.50 per dozen.

Heuchera, Coral Bells, Sanguinea—Grows 12 to 18 inches, blooms June to September. Nice for cutting flowers bright crimson. Fine for rock garden.
35c each; \$3.50 per dozen.

Hemerocallis Yellow Day Lily—The tall graceful grass-like foliage, and the flowers on long stems make them very desirable for naturalizing along streams.

Thunbergii—Similar to flava. Flowers in July, which is a month later.
20c each; \$1.50 per dozen.

Flava (Lemon Lily)—This variety has sweet scented, clear yellow flowers produced in June. Grows about 2½ feet high.
25c each; \$1.75 per dozen.

GRASSES ORNAMENTAL

Gynerium Argenteum (Pampas Grass)—Very attractive, white silvery plumes; lovely blooms and flowers the second season. Grows 5 feet.
25c each; \$2.00 per dozen.

Hollyhocks

THESE are old garden favorites nothing can equal them for planting along walls to bring out that beautiful effect that artists paint in so many pictures. Our strains are raised from the finest seed and we have them in double bright rose, maroon, newport pink, red, white and yellow. Any of the above 15c each. \$1.25 per dozen.

New Alleghany—This is a new variety of immense semi-double flowers with fringed edges. Same price as the double varieties.

New Single Mixed—All of the finest single varieties mixed. Same price as above.

HIBISCUS (Mallows)

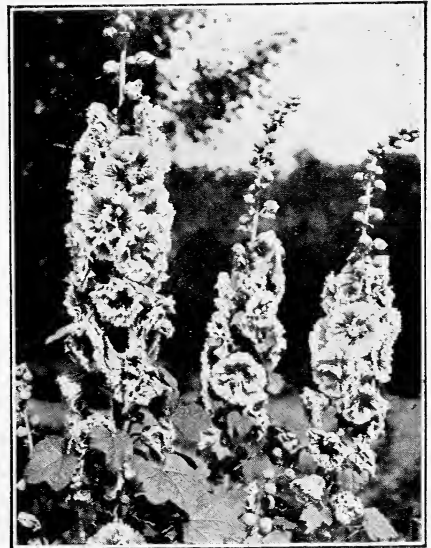
Mallow Marvels—A robust type of upright habit, flowers of enormous size produced in all the richest shades. Of crimson, pink and white.
20c each; \$1.75 per dozen.

Iberis—See Candytuft, page 29.

18 Assorted Rock Plants for your Rockery **\$3.69**

Postpaid

We will select the varieties that do well in your locality and tell you how to plant them. Order today.



HOLLYHOCK

*WE GIVE YOUR ORDER OUR PERSONAL ATTENTION Thereby You
Are Sure That The Plants, Trees And Shrubs You Order
From Us Will Be The Very Best*

IRIS

YOU will find listed herewith some of the finest varieties of Iris. Not the novelties that are known for a year or two, but old and tried varieties and new ones as well. You will find there are a great many varieties of colors that blend, and if you have one each of all the varieties that we have listed you will have a wonderful Iris collection. We send out good, strong roots which should bloom the first, and if not, the second year. The abbreviation is made for standard (S) or upright petals, and the (F) for Falls, the petals that have a tendency to fall to the side. From these descriptions you can imagine the kind of a bloom that you are going to have. We take special care in growing our Iris and you will find them satisfactory in every way.

Extra Choice New Introductions that are reasonably priced, all of which you will want.

Ambassador—S smoky bronze; F dark velvety maroon. A strong grower, large flowers disposed on its stalks. Late. Each, \$1.00.

Ballerine—S light violet blue; F a deeper shade. Very fragrant. Large flowers on strong, tall and slender stems. Early. Each, \$1.00.

Lent A. Williamson—S lavender violet; F velvety purple. Flowers are of gigantic size. Tall. Flowers freely produced. Each, \$1.00.

Lord of June—Tall vigorous grower. S blue; F deep blue violet. An extra fine one. Each 75c.

Seminole—Grows 30 inches. S reddish violet; F velvety crimson. A grand new variety. Each 75c.

Mother of Pearl—Grows 3 to 4 feet. S and F are pale, bluish lavender, with pearly tints. Good substance. Each, 75c.

Queen Caterina—Pale lavender violet, with yellow beard; veined with bronze. A strong grower. A perfect beauty. Large flower. Each, 50c.

Shekinah—Soft yellow, large flowers, a peculiar shade of color found in no other Iris. Each, 50c.

Souvenir de Mme. Gaudichau—S and F are a rich blackish purple and vigorous growth. Each, \$1.75.

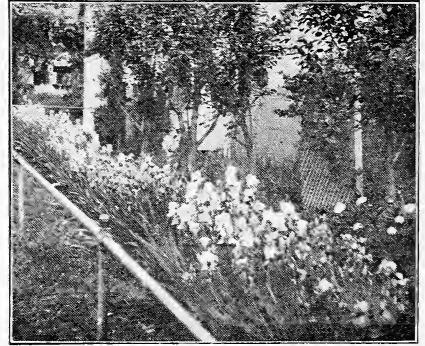
General list of German Iris.

We grow only varieties of exceptional merit. Following you will find varieties that are unusually fine in color and growth. We send out good, strong roots, well-packed and guaranteed to reach you in perfect condition.

Alcazar—S light mauve; F rich crimson with lighter veins. Produces tall, strong, widely branched flower stalks. Flowers are large and of good texture. Each 35c; \$3.00 per 10.

Archeveque—S deep velvety; F deep purple violet. Bloom of finest texture. Each 50c; \$4.50 per 10.

Caprice—S reddish purple; F deeper, self-colored. Each 35c; \$3.00 per 10.



Crusader—S light blue; F deep violet blue. Flowers very large, broad petaled. Mid-season bloomer. Each \$1.00.

Dejazet—S bronze rose with golden sheen; F reddish violet. Large broad flower. Mid-season bloomer. Each \$1.00.

Dr. Bernice—S coppery bronze; F velvety crimson. Very handsome. Combines with soft yellows. Each 30c; \$2.50 per 10.

Edouard Michel—S deep red violet; F a slightly deeper tone. Fine large flowers. Each 75c; \$6.00 per 10.

Her Majesty—S rose pink; F bright crimson, tinged a little darker. A wonderful Iris in pink combination. Each 35c; per 10, \$3.00.

Isoline—S lilac pink; F purplish old rose with golden throat and yellow beard. A variety you should have in your garden. Each 50c; \$3.50 per 10.

Juniata—An old time variety of good growth and a clear blue color. Each 25c; \$2.00 per 10.

King of Iris—S lemon yellow; F rich crimson bordered with gold. Tall with large flowers. Deserves the name of King of Iris. Each 50c; \$5.00 per 10.

Kochi—This is one of the earliest to bloom. The S and F are both rich claret purple. It is very early and one of the darkest colors. Each 35c; \$3.00 per 10.

La Niede—S and F are pure ivory white. Flowers are borne well above the foliage. A late variety, one of the finest, white. Each 50c; \$4.00 per 10.

IRIS (Continued)

Loirely—S light yellow; F ultramarine, bordered cream. Free blooming, rank grower and one of the best varieties of its kind. Each 25c; \$2.00 per 10.

Loute—S light blue and heliotrope; F reddish purple and bronze. Each 30c; \$2.50 per 10.

Lohengrin—Large, handsome, pink, silvery-mauve flowers. Each 30c; \$2.50 per 10.

Nibelunger—Flowers largely suffused with olive-green and yellow. Each 20c; \$1.50 per 10.

Prosper Langier—S fiery bronze; F velvety ruby purple. A strong grower, great bloomer. A variety you surely will like. Each 35c; \$3.00 per 10.

Pumila Cyanea Blue—This is a dwarf, early flowering, blue Iris, used for edging beds, etc. Works in wonderful with daffodils and early flowering bulbs. Each 20c; \$1.75 per 10.

Quaker Lady—S smoky lavender shaded yellow; F blue and gold. A strong grower, odd and attractive. Should have it in every collection. Each 35c; \$3.00 per 10.

White Knight—Absolutely snow white. Delicately sweet-scented. A vigorous grower. Each 65c; \$5.00 per 10.

Madam Chereau—An old time favorite, flowers of pure white with irregular border of clear blue. Stems are strong and long. A good grower. Each 20c; \$1.75 per 10.

Monsignor—S bluish lavender; F violet with white lines at throat. Flowers are immense. Blooms for a long time. Each 35c; Per 10, \$3.00.

Pallida Dalmatica—Exquisite shade of lavender blue. Strong grower, perfectly hardy and free blooming. Each 25c; \$2.00 per 10.

Princess Victoria Louise—S sulphur yellow; F plum color bordered cream. Each 30c; per 10, \$2.50.

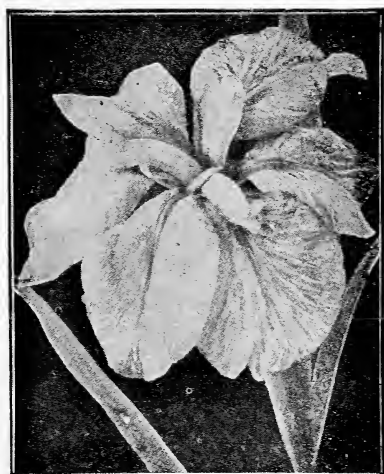
Queen of May—S lilac pink; F lilac. This is an old time variety and still should be in every collection. A good grower, a wonderful bloomer, and an orchid shade of flowers. Each 20c; \$1.75 per 10.

Reine Nixie—S white, very large; F blended with white. Rich violet purple with narrow white edge. Each 35c; \$3.00 per 10.

W. J. Fryer—S large, bright yellow; F maroon with yellow border, and yellow at base. Center shaded violet. Each 50c; per 10, \$4.00.

Japanese Iris

THE Japanese Iris, the last to bloom of the Iris family, and they are next to the orchid, in color and size of flower. Plant them where they get good sun and drainage, give them plenty of water at blooming time, and you will be delighted with the results.



JAPANESE IRIS

Shiga-no-Urinana—Dark blue, yellow center, good grower, and free bloomer.

Zama-no-Mori—One of the best delicately tinted varieties, white standards, margin blue.

Mahogany—Flowers are large double. Color is a purplish red. Erect petals are finely crested. A very late variety.

Purple and Gold—Has large double purple flowers deep golden centers. I have had this variety ten inches across.

Gould Bound—A fine double white, with a gold banded center. One of the best double varieties.

Monifi-no-Taki—A choice double variety of bright rosy crimson feathered in white.

Kumo-no-Nobi—Standards. Bright lavender purple. One of the most distinguished sorts.

Koko-no-Iro—A royal purple with yellow center. This is one of the most showy of the Japanese Iris.

Kuro-Komo—Purple overlaid with dark blue. Fine yellow throat.

Taïke-Iraku—A rich bronze purple with yellow blotches, tipped blue. The stamens are lavender.

Uchi—Six petals, flowers of the largest size, color, ceruleum blue, with gold center, blooms the longest of all Japanese Iris.

Data Dogu—Reddish pink with orange blotches, A very fine variety. Any of the above 35c each; \$3.00 per doz.

Extra heavy clumps for immediate effect in landscape planting, \$1.00 each or \$10.00 per doz.

Hardy Perennials --- continued

LIATRIS (Blazing Star or Gay Feather.)

Pycnostachya—This is the Kansas Gay Feather, it blooms in midsummer and throws up long narrow spikes of rich purplish flower, very hardy and desirable as a cut flower.

25c each; \$2.00 per doz.

Linum Perenne Blue—This is the blue hardy flax so desirable in the border or rockery, grows two feet high, has light graceful foliage large flowers which bloom all summer.

15c each; \$1.50 per doz.

Lily of the Valley—(See Convallaria Page 29)

Auratum—The gold banded lily from Japan undoubtedly the finest, flowers are large, six pedals of delicate ivory white color, thickly dotted with chocolate crimson spots. And a golden stripe through the center.

30c each; \$3.00 per doz.

Hardy Garden Lilies

THE Lilies deserve more attention as there are so many places in the garden that they can be used to great advantage.

Auratum Platyphyllum—This is an improvement over the gold band, grows larger, the flowers are enormous, white richly spotted yellow, no doubt the choicest of all.

45c each; \$5.00 per doz.

Candidum, or Madonna Lily—The old fashioned sweet scented white garden lily, blooms in June, sold in September only.

Large size 30c each; \$3.00 per doz.

Hansoni—This blooms early in the spring, grows four to five feet high. The flowers are bright orange, spotted more or less with brown.

65c each; \$6.00 per doz.

Henryii—A new Japanese Lily. The plant is of vigorous and the flowers bright orange yellow, very hardy.

65c each; \$6.50 per doz.

Pardalinum—The flowers reflect, are bright yellow at base, spotted brownish purple. 3 to 4 feet, bloom July and August.

30c each; \$3.00 per doz.

Lily Elegans—Very hardy dwarf lilies, thriving in any garden soil. Large erect flowers of various shades of yellow orange and red, mixed colors.

30c each; \$3.00 per doz.

Lily Regal—This is the wonderful new Lily of China, it is very hardy. The flowers are white, slightly suffused with pink and a beautiful shade of canary yellow at the center extending part way up the flower. Highly perfumed like the Jasmine.

35c each; \$3.00 per doz.

Extra large size, 50c each; \$4.00 per doz.

Speciosum Magnificum—These are Japanese, magnificent large flowers of a deep rich red.

30c each; \$3.00 per doz.

Superbum—Grows 3 to 4 ft., blooms in July. Flowers bright reddish orange, and spotted, very hardy.

15c each; \$1.50 per doz.

Lily Tigrinum Floreplene—This is the double Tiger Lily, the same as the single in color.

20c each; \$1.25 per doz.

Tigrinum Single—This is the well known single type of lily, large orange blossoms.

15c each; \$1.75 per doz.

Lupines

THE Lupines are very effective plants producing large spikes of flowers blooming in May and June. They require a well-prepared garden soil and prefer shade at least in the afternoon, grow about 3 feet high, and are deserving of a place in the border the same as Delphinium and the Foxglove. Our stock is grown from the finest imported seed and are true to type.

Polyphyllum Roseus—The combination of light and dark shades of pink.

Atro-Coeruleus—This is a dark blue variety, a good grower and bloomer.

Lavender Queen—This variety has lavender tinted, pink blossoms and is very pretty.

Downers Hybrids—This is a new strain of hybrids Lupines, the colors are mixed and the shading unusual in these plants.

Harkness & Sons Hybrids—The world famed Regal Lupines, we have these in yellow, navy blue, apricot, fawn and yellow, pink and yellow, large bronze.

50c each; \$5.00 per doz.

All other varieties listed 35c each, \$3.50 per doz.

TERMS:- Cash With Order, Except In Large Orders, Where Satisfactory Reference Is Given



LUPINES (See Page 36)

Lythrum, (Loosestrife)

Superbum Roseum—This is a very showy variety in various shade pink flowers and is splendid for planting along banks of streams and ponds.

25c each; \$2.00 per doz.

MERTENSIA BLUE BELLS

Virginica—An early spring flowering plant 12 to 18 inches high with blue flowers fading to clear pink, fine for planting with Daffodills.

20c each; \$1.50 per doz.

**OUR PERENNIALS WILL PLEASE YOU
PLANT SOME TODAY**

OUR PERENNIALS are raised from the finest seed imported from specialists in their respective lines. We spare no money in purchasing the highest pedigreed seed obtainable. You will find our plants superior to all others, and our methods of growing them are the best. A trial will convince you.

Poppies

THE Oriental poppies should be planted during the last of August and September, and for a gorgeous display of rich and brilliant coloring, nothing equals them during their period of flowering, May and June.

Oriental—Large cup shaped bloom of crimson scarlet.

25c each; \$2.00 per doz.

Mrs. Perry—This is orange apricot, a very fine variety.

30c each; \$2.50 per doz.

Oriental Hybrids—New varieties mixed. These are Hybrids and come in salmon, orange and various colors.

30c each; \$2.50 per doz.

Princess Victoria Louise—Fine soft salmon rose.

30c each; \$2.50 per doz.

Oenothera (Evening Primrose)—Elegant for a sunny position in the border or on the rockery, blooms all summer.

Missouri Ensif—Height 10 inches, blooms June and August, a low spreading variety, profuse bloomer, deep yellow, flowers often five inches across.

20c each; \$2.00 per doz.

Youngi—Grows about 2 feet, blooms June to August, a strong stocky grower, shiny foliage and produces bright lemon yellow flowers in great profusion.

20c each; \$2.00 per doz.

Physostegia Vivid—This is an improved variety over the common false dragon head, blooms three weeks later, and the flowers are vivid pink, larger and lasts well when cut.

25c each; \$2.00 per doz.

Peonies

THE varieties offered herewith is a partial collection of the different Peonies that we grow. They are grown under a high state of cultivation, in soil that produces a good root system with fine, well-developed eyes. All our roots are three to five eyes.

Albert Crouse—(8.6) Large flower, milk white, petals tinted lilac, rose type bloom, midseason. \$1.00 each.

Asa Gray—(1) Unique flowers milk white, thickly sprinkled with carmine dots, the total effect is delicate pink, midseason.

\$1.50 each; 5 for \$6.00.

Avalanche—(8.7) Ivory white touched with crimson on the center petals, late midseason.

\$1.00 each; 5 for \$4.50.

Andre Laurie—Dark rose, large, very attractive; early.

60c each; 10 for \$5.00.

Couronne d'Or—(8.1) Large, full flowers, pure white of golden center, late.

\$1.00 each; \$10.00 per doz.

Edulis Superba—Dark pink; free bloomer; early.

50c each; \$5.00 per doz.

Felix Crousse—(8.4) A large compact globular bloom, fine form deep ruby red, very choice midseason to late.

\$1.00 each; 6 for \$5.00.

Festiva Maxima—(9.3) Exceptionally large ivory white flowers with a fleck of crimson in the center. Midseason.

75c each; \$7.50 per doz.

Duchess de Orleans—Pink, early, large flowering.

50c each; 6 for \$2.50.

Floral Treasure—(7.5) Large showy rose type, pale lilac rose.

50c each; 6 for \$2.50.

Duke of Wellington—Sulphur white, very late.

75c each; 6 for \$3.75.

Karl Rosefield—(8.8) Brilliant dark crimson, one of the best of its color. \$1.50 each.

Livinstone—(8.1) Compact flowers of the light-silvery pink, flecked with carmine in center, blooms freely and late. \$1.50 each.

L' Indispensable—(7.3) Very large flat blooms of delicate pink flowers.

\$1.00 each; 6 for \$5.00.

Mons Martin Cahuzac—(8.8) Very dark garnet red or maroon, globular flowers on long stem, this is one of the darkest of the peonies of the season.

Large divisions \$3.00 each.

Mons Jules Elie—(9.2) Immense globular bloom, the guard petals are recurved, resembling chrysanthemums, a clear medium pink, with a silvery tinge, midseason.

Large divisions \$1.50.

Midnight—(7.3) A large, very dark maroon, variety, good for cut flowers early to midseason.

\$1.00 each; 6 for \$5.00.

Marie Lemoine—Sulphur white occasionally carmine tipped very fine variety, and very late.

\$1.00 each; 6 for \$5.00.



PEONIES

Reine Hortense, (8.7)—Large compact flowers with broad rounded petals, soft flesh color, in the center some crimson splashed, a very charming variety, midseason.

Large division, \$1.50 each.

Queen Victoria—Pure white; one of the best standard varieties for cut flowers.

50c each; \$4.50 per 10.

Jeanne d'Arc—(Golden Harvest) (7.3) Guard petals are soft pink and center of creamy yellow with a touch of pink, midseason.

50c each; 6 for \$5.00.

Officialis Rubia—(8.6) This is a double bomb shape flower of bright blood red, almost no trace of purple, the oldfashioned red piney of our Grandmothers days. 75c each.

Sarah Bernhardt—(9.0) Very large, flowers of good quality, delicate shell pink, extra fine variety, late.

\$2.00 each; 5 for \$9.00.

Triomphe d'Y Exposition d'Lille—(7.8) Deep shell pink with minute splashing of a deeper shade, giving it a Hydrangea pink effect, early to midseason.

\$1.00 each; 6 for \$5.00.

Venus—(8.3) Exquisite pointed bud, which open into a large flower of delicate shell pink, an extra good variety, fine for cutting.

\$1.50 each; 5 for \$7.00.

We grow many more rare and choice varieties, if interested write for our special list.

Daphne Cneorum

A prostrate growing shrub with foliage evergreen like Rhododendron. Likes a poor soil, should have a little covering, fine for around garden pools and in the rockeries. Flowers are rose pink, sweet scented and bloom in May and in September. 6 to 8 in., each, \$1.25; 6 for \$5.50.

Our Special Offer on Peonies

6 Extra Choice Varieties
Our Selection

2 pink; 2 red; 2 white for
Regular Price \$9.00

\$6.10

Our Landscape Department will assist you in your Perennial Garden arrangement, this service being FREE to our customers. Write us today. Mark your letter "Department L."

Hardy Phlox

PERENNIAL Phlox succeed in almost any soil, but in hot weather occasional soaking of water is beneficial, if the first spikes of bloom are removed, soon as over, they will produce a second supply of flowers, late in Autumn.

Athis—Deep clear salmon pink, very fine.
20c each; \$2.00 per doz.

Champs Elysee— Fine rich crimson.
20c each; \$2.00 per doz.

Elizabeth Campbell—Clear salmon pink with a lighter center, growth medium height. This is one of the most popular in the pink phlox.
35c each; \$3.00 per doz.

Eclairer—Large scarlet flowers, bright and cheerful face clearly defined crimson eye, surrounded with light halo.
20c each; \$2.00 per doz.

Rosenberg—Purplish wine red, tall grower and very showy.
35c each; \$3.00 per doz.

Pantheon—Clear deep pink with faint halo, fine for mass effect tall growing, medium to late varieties.
20c each; \$2.00 per doz.

Brides Maid—Pure white with crimson carmine eye, season medium, good grower and free bloomer.
20c each; \$2.00 per dozen.

Mrs. Jenkins—White immense panicles of flowers, free bloomer and one of the best of white varieties.
20c each; \$2.00 per dozen.

Miss Lingard—One of the best Phlox in cultivation, large immense heads of beautiful white flowers in June and blooms again in September and October, very fine for cutting.
20c each; \$2.00 per dozen.

R. P. Struthers—Bright rosy cherry red, crimson eye, tall grower and free bloomer, and very effective in landscape planting.
20c each; \$2.00 per doz.

Rheinlander—This is a fine salmon pink with claret eye, the flowers are large and produced in great profusion.
35c each; \$3.50 per dozen.

Thor—A beautiful shade of deep salmon pink, suffused and overlaid with a scarlet glow, Aniline red eye.
20c each; \$2.00 per dozen.

Phlox Mrs. Chas. Door—A beautiful shade of lavender.
20c each; \$2.00 per dozen.



HARDY PHLOX

Phlox Sublata—Early flowering moss like evergreen foliage, in April and May is hidden under mass of the bloom. A fine rock plant, or for carpeting the ground.

Rosea—Rose pink, thrives in hot dry situation.
20c each; \$2.25 per dozen.

Vivid—A brighter pink with fiery red eye.
40c each; \$4.00 per dozen.

PLATYCODON

Platycodon—(Balloon Flower).

Grandiflora—Blue, height 18 inches, blooms June to October.
25c each; \$2.25 per dozen.

Mariesi—Blue, 12 to 15 inches, blooms from July to late September, dwarf, fine for the rock garden.
25c each; \$2.25 per dozen.

HARDY SALVIA

Salvia Azurea—Grows 3 to 4 feet, has pretty sky-blue flowers in September.
20c each; \$2.00 per dozen.

Salvia Pitcheri—This is an improvement over the above varieties, has rich gentian-blue flowers, and produces flowers in great profusion.
35c each; 3 for \$1.00.

SPECIAL NOTICE

All prices in this catalogue are F. O. B. Westminster, Md., unless otherwise specified. If stock is wanted sent by parcel post, be sure and send enough money to cover charges, otherwise stock will be sent by freight or express.

Pyrethrum --- Pereian or Painted Daisy

These flowers are perfectly hardy, and invaluable for cut flowers, bloom through the summer and early fall, nothing can surpass the Pyrethrums in profusion of flower.

James Kelway—A rich velvety blood red, a new variety from England. 25c each; \$2.50 per doz.

Roseum—This is a deep rose color, single flowered, free flowering and fine for cut flowers. 20c each; \$2.00 per doz.

Hybridum Grandiflorum—These are quite large flowers and the colors are mixed, all shades. Also very desirable as cut flowers. 20c each; \$2.00 per doz.



Sedum

THE dwarf varieties are fine for the rockeries, etc. The taller varieties are effective for the border. Thrives in almost any soil, likes full sun.

Acre—(Golden Moss). Green foliage, flowers bright yellow, grows 4 inches high. Blooms early. 20c each; \$2.00 per dozen.

Sieboldi—Round glaucous foliage, bright pink flowers in August and September, dwarf. 25c each; \$2.50 per doz.

Glaucum—An excellent dwarf variety for rockeries, or edgings. 25c each; \$2.50 per dozen.

Spectabile—Brilliant, grows 18 inches high, light green foliage with brilliant rose-color flower. Fine in a hardy border. 25c each; \$2.25 per dozen.

Statice (Sea Lavender)—A fine plant for the rockery or border. Leaves are leather like, the flowers are fine purplish blue, and bloom in July and August. They can be cut and dried and last for months. The variety *Latifolia* is the best one. 20c each; \$2.25 per dozen.

Spirea --- Astilbe

THESE produce feathery heads of flowers in June and July, like a half shady position and moist soil.

America—Deep pink, a fine variety. Nice clumps. 50c each; \$5.00 per dozen.

Freule Van Den Bosch—This is a new variety grows 3½ feet high, the flower spikes are a dark pink color, fine for the garden. 75c each; \$7.50 per dozen.

Filipendula, (Dropwort)—Numerous corymbs of white flowers in June and July, grows about 15 inches high. The foliage is a dark green fern-like.

25c each; \$2.50 per dozen.

Stokesia, (Cornflower Aster),

Cyanea Coerulea—Beautiful light blue flowers, produced on branches 18 to 24 inches high, from July to October. Very hardy.

20c each; \$2.00 per dozen.

Sweet Williams (see page 31, *Dianthus Barbatus*).

TRITOMA

Pfitzeri—Everblooming, likes good garden soil, in bloom from August to October with spikes 3 to 4 feet high, rich orange scarlet, the plants should be covered during the winter, or bury the roots in the sand in a cool cellar.

50c each; \$5.00 per dozen.

Veronica, (Speedwell)—Like a rich well drained soil in full sun, and are desirable for border and rock garden.

Longifolia Subsessilis—Height 2 feet, July to September. Large beautiful blue fine spikes, fine for cutting. This plant should be in every border.

35c each; 3 for \$1.00.

Rupestris—A fine rock plant, grows 3 to 4 inches high, deep green foliage, covered in June with bright blue flowers.

35c each; 3 for \$1.00.

Spicata Rosea—Grows 2 feet, blooms June to September and the flowers are a beautiful pink. 25c each; \$2.50 per dozen.

Viola, (Lifted Pansies)—These are the best edging plants for the hardy border, if given the proper care they bloom from May to October. Don't allow the blossoms to go to seed if you want a continuation bloom.

Cornuta Papilio—A blue and white variety, very desirable for the rock garden.

Improved Scotch Hybrids—These varieties are of various colors and blotched, very striking.

Blue Perfection—A fine variety of light blue flowers, free bloomer, very showy.

Lutea Splendens—Grows about 6 inches high, has fine golden yellow flowers. A wonderful variety.

Jersey Gem—This is one of the finest English bedding varieties. A pure rich violet color slightly perfumed. Dwarf in habit, free bloomer. 35c each; \$3.50 per dozen.

YUCCA

Filamentosa, **Adams Needle**—This is an indispensable plant for the rockery, the foliage is broad sword like, evergreen and produces immense branching spikes of creamy white flowers, height about 6 feet, should be planted in spring only.

35c each; 3 for \$1.00.

ROSES

Hybrid Perpetual Roses

THE varieties we have listed are the best that can be selected in the hybrid perpetual class. This class of roses are extremely hardy. And as they produce an abundance of bloom in June, they add so much to your garden at that time.

American Beauty Red—Fine rich dark carmine, a free bloomer in June.

American Beauty White, or (Frau Karl Druschki)—This is the ideal hardy white rose. A good grower, free bloomer, and very hardy.

Black Prince—Red shading to black, a compact grower, fine for the garden.

Frau Karl Druschki—See American Beauty White.

General Jack—This is a very dark crimson, an old standby, flowers medium to large.

Mrs. John Lang—Immense, flowers full and double and produce in great profusion, on long stiff stem, exceedingly fragrant, clear bright shiny pink in color, blooms up until frost.

Paul Neyron—Pink flowers, the largest of all roses, often measuring 5 inches across in bloom. A shy bloomer, but very hardy.

Magna Charter—Bright pink, suffused with carmine, good grower.

Ulrich Brunner—A bright cherry red and holds its place well among the hybrid perpetual roses.

Gruss an Teplitz—This is a rose for every body, succeeds under the most trying condition, the flowers are of the richest scarlet shading to a velvet crimson. Fragrant, strong grower and in bloom all the time.

George Arends (Pink Frau Karl Druschki)—Fine Pink, good, free bloomer.

Anna de Diesbach—Bright carmine rose. Large size, very fine.

Captain Hayward—Very large crimson flower, sweetly scented.

Clio—A fine satiny flesh color, deep center, large globular flowers born on long stems.

SPECIAL NOTICE

All prices in this catalogue are F. O. B. Westminster, Md., unless otherwise specified. If stock is wanted sent by parcel post, be sure and send enough money to cover charges; otherwise stock will be sent by freight or express.

PRICE ANY ABOVE 2 YEAR FINE PLANTS 80c EACH; \$8:50 DOZEN

6 Wonderful New Roses \$11.60 Postpaid EACH \$2.25

LORD CHARLEMONT

New. Splendid pointed buds and double blooms of vivid Scarlet-red which does not fade as many reds do. One of the outstanding new Roses of recent years.

LADY MARGARET STEWART

New. Immense buds of golden orange and copper, opening to large luscious flowers of golden yellow. Hard, glossy foliage. We believe it will surpass the famous Rev. F. Page-Roberts when its merits become known.

MRS. LOVELL SWISHER

New. Immense flowers of heavy texture. Pale flesh-pink with a strong creamy suffusion. Excellent growth; strong erect stem.

MARGARET M'BREDY

New. Gorgeous orange-scarlet or intense brick-red. Very large, of globular, cupped flowers with more petals than Padre or any other Rose of similar color. Very vigorous growth. A most promising new variety.

MRS. A. R. BARRACLOUGH

New. Giant tapering buds and blooms of glowing light pink with golden suffusion. One of the most satisfactory new Roses and a sure winner.

MME. ALBERT BARBIER

New. Large, beautifully formed flowers with shell-like petals of chamois-pink and pale yellow blending to white at edges. Practically an ever-bloomer; flowers throughout summer and autumn.

Only One Assortment to a Customer

Hybrid Tea Roses

THESE are the most popular and useful of all roses, supplying flowers of beautiful form, color and fragrance. They are hardy in most parts of the United States, but must have suitable protection in climates of zero weather or worse.

LaFrance—This is rose pink and one of the best bedding roses, blooms continually, fine shaped flowers sweetly scented.

Los Angeles—Luminous flamed pink, toned coral and shaded translucent gold at base of petals.

Lady Hillington—A deep apricot yellow with slender pointed buds elegantly cupped flowers, good foliage and fragrant bloom.

Luxembourg—A very remarkable rich orange yellow, flower with coppery shades and creamy yellow tips. The plant is a profused bloomer very vigorous. The most satisfactory yellow rose for the south.

Mrs. Aaron Ward—A remarkably floriferous variety of strong vigorous compact growth; the flowers are full double and the color a distinct Indian-yellow shading lighter toward the edges.

Madam Butterfly—Beautiful buds and the flowers are bright pink, apricot and gold, very free flowering and highly scented.

Ophelia—This variety has made such a record for itself so that it is classed with the very best, admired by every one. The flowers are held erect on long stiff stems and are of perfect form, good size, color, salmon flesh tinted rose.

Pink Radiance—An ideal bedding rose of American origin, it continues to produce its large flowers throughout the summer when other varieties fail. The color is a brilliant carmine pink with salmon pink and yellow shadings at the base of the petals, of all the roses here is one you should include in your list.

Our Special Rose Garden Collection

- 2 White Killarneys\$2.00
- 2 Red Radiance 2.00
- 2 Pink Radiance 2.00
- 2 Madam Butterfly 2.00
- 2 Gen. MacArthur 2.00

The usual catalogue price10.00

Our Special Price \$6.95

Postpaid

No cash discount allowed on special offers.

Our Suburb Collection

**3 Large 2 year Old \$2.11
Roses for**

Postpaid

- 1 RED RADIANCE
- 1 PINK RADIANCE
- 1 SOUV. DE CLAUDIUS PERNET

These are the hardiest free blooming roses for general planting. Bloom constantly—fine for cut flowers. Place your order today as stock is limited.

Red Radiance—This is a counter part of Radiance possessing all the good traits of its parent plant, but differing in color, which is the brightest cerise red.

White Killarney—A pure white but more double than the Killarney, a beautiful rose and a good bloomer.

Pink Killarney—One of the most popular pink garden roses. The blooms are large and produced in profusion.

Premier—Brilliant rich deep pink flowers, large size borne singly on long stiff stems, very fragrant, a good late summer and fall variety. It makes fine bouquets combined with Delphinium Belledonna.

Roselandia—Rich golden yellow fragrant flower a sport of Ophelia, therefor a good bloomer and fine flower.

Miss Lolita Armour—The coloring of this variety is beyond discription, the flowers of large size, double, of a deep coral red with a golden coppery red suffusion. A strong vigorous grower, free flowering. Plant this variety in your garden, and one bloom will be worth of the plant.

Souv. de Claudius Pernet—A most vigorous grower of beautiful brilliant green foliage. The buds are long pointed of exquisite shape on long stiff stems, a beautifully formed bloom. Color sunflower yellow deeper in the center. It retains its wonderful color without fading in the hottest weather.

Price—Any of the above in strong two year old plants—75c each; \$8.50 per dozen.

Roses --- Climbers and Ramblers

THE Climbers and Ramblers give a great quantity of bloom during the month of June and add much to the garden and lawn where they are trained on trellises, pillars or over the pergola. Some of the varieties are adopted to scramble over the stone pile, hillside or old fence. Many of the varieties are very attractive when not in bloom on account of their beautiful foliage.

Climbing American Beauty—Early and very beautiful. The flowers are brilliant carmine, especially fine form having a rich perfume, and are borne singly or in threes. Moderate grower.

American Pillar—This is a rose originated by Dr. Van Fleet and a fairly large single flowers of brilliant crimson pink, with large white centers and the beautiful golden yellow stamens add so much to its beauty. It blooms profusely in tremendous clusters. A late bloomer and if planted where the hot sun does not strike it in the afternoon, the flowers will last much longer.

Crimson Rambler—This is the old time deep crimson climbing rose, that is so extensively planted. The flowers are borne in immense trusses in great profusion. Very hardy.

Dorothy Perkins—Beautiful flowers of brilliant shell pink in splendid pendulous sprays. The growth is very rapid. The long slender canes and pretty foliage make this a desirable rose where a robust climber is desired.

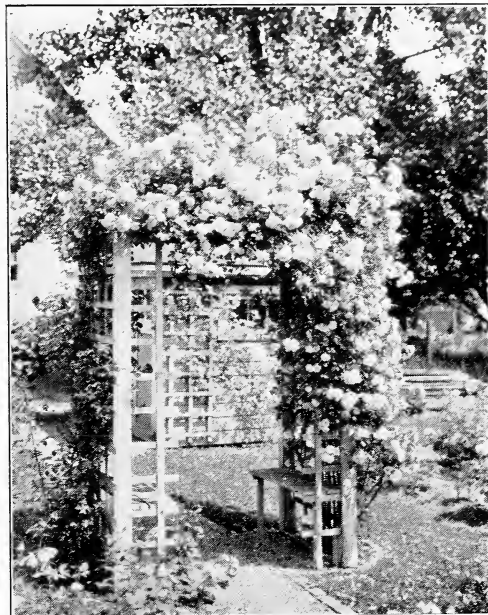
Dr. Van Fleet—The pale pink buds and flowers are equal in form and size to the finest hybrid Teas, they are borne on long individual stems. The plants make enormous growth and produce thousands of flowers. It is very desirable for cutting.

Flower of Fairfield—Has the same deep colored flower as the crimson rambler, but if flowers all summer, and for this reason is more valuable than any other rambler rose.

Mary Wallace—This is a newer variety of Dr. Van Fleets introduction. Large very bright pink flowers, illumined with shining gold. Double, cup shape moderately fragrant. Has a vigorous habit grows 10 to 15 feet high. The foliage is superb.

Pauls Scarlet Climber—The flowers are intense scarlet of excellent shape moderate size. The flowers are borne in small trusses and the plant is of moderate growth. Therefore this rose should be planted where not too tall a climber is expected. The foliage is good and blooms liberally.

Prices—2 years old No. 1, 75c each; \$7.50 per dozen.



THIS SHOWS HOW THE CLIMBER ADDS TO THE BEAUTY AND VALUE OF THE HOME

Tausendschon—Large flowers ruffled varying from the bud to the open flower of many shades of faint yellow, creamy white, bright rose pink. It is slightly fragrant, and are produced in enormous trusses. Grows up to 15 feet in height. Thornless, hardy and healthy.

Gardenia—Yellow buds and creamy flowers with rich yellow centers. Are moderately large, well formed and produced in small sprays, very hardy, except in severest climate.

Special offer—3 plants our choice, \$1.75 post paid.

What will add more to the beauty and value of your home than a nice lattice with climbing roses. Try it.

Our Get Acquainted Offer

The Greatest Bargain of the Season

12 Fine 2 year Old Roses for **\$7.21** Postpaid

1 each: Luxembourg Yellow, Red Radiance, Premier, White Killarney, F. K. Druschki, American Beauty, Baby Rambler Red, Baby Rambler Pink, F. J. Grootendorst, and three climbers, Tausendschon Pink, Excelsa Red, American Pillar, pink and white.

Dwarf Polyantha or Baby Roses—These are the small rose bushes that produce the tiny flower in great profusion all summer long. They are used for bedding or massing on the lawn, we have the following varieties: Baby Rambler Crimson, Baby Tausendschon pink, Baby Erna Teschendorff carmine red, Baby Ellen Poulsen bright rose, Baby Katherine Zeimet white.

Price of the above varieties: 75c each; \$7.50 per dozen.

ROSES

Rugosa and Rugosa Hybrids

Belle Poitevine—Color fine double rose, good grower, free bloomer.

Conrad F. Meyer—This is a strong grower, produces large double clear silvery rose flowers, very showy in the bud stage and when they first open out.

F. J. Grootendorst—This variety blooms freely all summer, bright crimson flowers in clusters, strong compact grower with beautiful foliage, very desirable as a shrub rose.

Harrisons Yellow—The flowers are deep golden yellow, the bush is a strong grower, very hardy, fine for massing.

Rosa Rugosa Rubra—This is red Japanese Rugosa. Used for shrubbery effects.

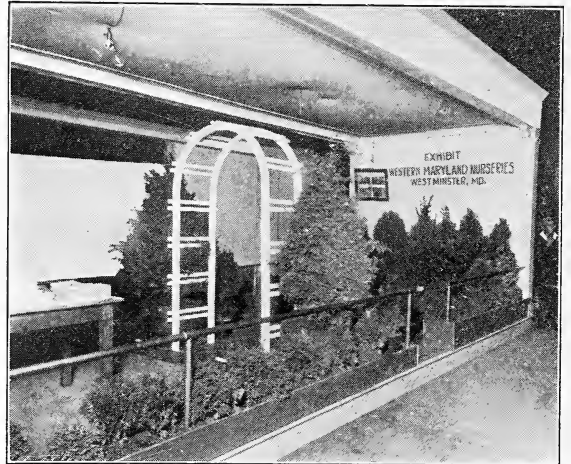
Price of above 2 year No. 1—60c each; \$6.00 per dozen.

New Rose Species

These valuable roses are worth many times the price we ask, as they are the latest in their class.

Rosa Hugonis—A new variety from China, growth shrub like, often 6 feet high, fine for color in shrubry border. The flowers are single and bloom in early May. At this time the bush is a solid mass of gold. Do not trim this variety. \$1.00 each.

Rose Xanthina—This is a double flowering Hugonis, the bright yellow flowers are two inches across, blooms freely, very hardy and attractive. \$1.25 each.



OUR EXHIBIT YORK COUNTY FAIR
YORK, PA.

You Will Be Delighted With Our Roses

When you receive your order you will find them nice 2 yr. old bushes and well packed in fine moss and ready to start growing. Plant them in good soil with a little Bone Meal setting the bud about 2½ inches below the level of the ground and cut off the tops until only 8 inches high.



*Our Plants Add Beauty
And Value To
Your Home*

*Our
Landscape Department
Is Free To Our Customers
Write Department L*

BULBS

Gladioli, Dahlias and Cannas

WE have a large and fine assortment of Gladioli, Dahlias and Cannas, and various other bulbs. Our plants are all grown with care, and we select out bulbs and roots which will give you a large showing of bloom the first year.

Dahlias—You will find our select varieties something fine, which is a great improvement over the common Dahlias, and the prices are very reasonable for the size roots we send out.

Gladioli—These bulbs are large, strong, well cared for and give fine bloom spikes of extraordinary flowers. The varieties we are offering below are well-known as old standbys which thrive so well in the borders or in the gardens.

Crimson Glow—This is well named, the color is a glowing crimson scarlet, the spikes are massive, the flower large size a strong vigorous grower.

15c each, \$1.25 dozen, \$8.00 per hundred.

Halley—Orange-pink, white throat, very early.

4c each, 35c dozen, \$2.75 per hundred.

LeMarechal Foch—This might be called an improved American, soft flesh pink in color, very large blooms which are two weeks earlier than the American. Vigorous growth.

5c each, 55c dozen, \$4.00 per hundred.

Mrs. Frank Pendleton—Flowers of large size on strong stems, color a lovely salmon shade with brilliant deep red blotches in the throat.

6c each, 65c dozen, \$5.00 per hundred.

Mrs. Francis King—A striking shade of scarlet or flame color, a great cut flower, good strong grower.

6c each, 60c dozen; \$4.75 per hundred.

Schwaben—This is considered one of the best and freest growing yellow variety. Flowers are very large and compact, one you should have in your collection.

6c each, 65c dozen, \$5.00 per hundred.

Our Special Offer Of Gladioli

This special offer is made up from the above varieties and many others with equal merit, a great assortment of color, good size bulbs. If you do not care to have named varieties in special colors here is your chance to get an assortment at a much reduced price.

25 Bulbs assorted\$.97 postpaid
50 Bulbs assorted 1.69 postpaid
100 Bulbs assorted 3.47 postpaid

**WE ARE GROWERS. YOUR ORDER
IS FILLED WITH THE VERY BEST,
CLEAN, FRESH STOCK.**



CANNAS

Cannas—Our Cannas are all pot grown in three and four inch pots and will begin to bloom within a few weeks after planted. We have dormant roots to offer up until March 1st.

King Humbert—This is a variety with a brilliant orange-scarlet color flower, one of the most popular of all Cannas and grows about 5 feet, has broad coppery bronze massive foliage, and is one that should be on your lawn.

Potted plants 25c each, \$2.50 per dozen.

Dormant roots 15c each, 1.50 per dozen.

Bronze Bedder—Very attractive, half dark brown foliage with a dark red flower.

Dormant roots, 10c each, \$1.00 per doz.

Pennsylvania—This is of a dwarf, green foliage, red flower.

Dormant roots, 15c each, \$1.00 per doz.

Richard Wallace—Green foliage, grows 4 feet, yellow flowers, an old standby.

15c each; \$1.50 per dozen.

Our special Canna offer, two each of six named sorts, 12 plants in all, \$1.25. This offer in dormant roots only.

Our Extra Choice Variety Of Cannas

These are the New Giant flowered Cannas, and are a great improvement over the more common sort. Furnished in pot plants only.

The Ambassador—This is practically the same as President, except the foliage is bronze. Grows about 5 ft. high.

35c each; \$4.00 per dozen.

City of Portland—A wonderful bright rosy pink, grows 3½ feet, green foliage, are very showy.

35c each; \$3.50 dozen.

The President—The greatest red Canna, possessing every desirable quality, immense size, vigorous grower. A penetrating color, free bloomer, grows 5 feet.

25c each; \$2.50 per dozen.

Golden Eagle—Clear golden yellow, throwing its showy trusses well above the foliage. No other pure yellow equals it in all round worth and effectiveness. Grows 4 ft.

35c each; \$4.00 per dozen.

SPECIAL OFFER

Our flower lovers Collection of Cannas, Gladioli and Dahlias. Here is one of the greatest offers of the season. 50 Gladioli our selection of varieties, 18 Cannas, all fine flower sorts, 6 extra Dahlias. These will give you a good assortment of collection, all for \$4.98. Order early, as our stock is limited. No cash discount on this special offer.

DAHLIAS

Our prize winning Dahlias you will find on this page, some of the finest varieties of this most popular flower for size of bloom, color and stately appearance. The Dahlia is one of our leading flowers, it has become so popular the last few years that there is a great race among the growers to supply their customers with the finest sort.

Place your order with us for these wonderful plants and you will be more than satisfied. We send out dormant roots and nice grown pot plants, which will give you early bloom and they are sure to grow.

Mrs. Carl Salbach, (Decorative type)—A deep lavender pink, a wonderful cut flower, very large, very long stems.
75c each; 3 for \$2.00.

Pride of California—Deep rich red, splendid stock, free bloomer.
30c each; \$3.00 per doz.

Dream—Salmon and Pink Amber glow.
20c each; \$2.25 per dozen.

Storm King—This is a show type, a good grower, free bloomer and medium size flowers, very showy.
15c each; \$1.50 per dozen.

Copper—This is a good grower, produces wonderful color copper shades flowers in great profusion.
20c each; \$2.00 per dozen.

Florence Finger, (A Decorative type)—A rich dark rose, good grower, free bloomer, flowers produced on long stems.
30c each; \$3.50 per doz.

We have the following varieties to offer you:

AT GREATLY REDUCED PRICES

Azalea—Yellow and pink (decorative).

Purity—Pure white (decorative).

Rosalia Styles—Large Tyrian Pink (decorative).

Sea Hawk—Red Overlaid lavender tinted (decorative).

Zilkola—Sunset Gold (decorative).

The above list of varieties we are offering at a special price of 15c each.

\$1.50 per dozen.

OUR PRIZE WINNING STOCK

These are the latest introductions. Among them you will find the varieties that have reached the perfection by the various Dahlia Hybridizers. The prices quoted are for 2¼ inch pot plants, and guaranteed to reach you in perfect condition.

Ambassador (Cactus)—A soft yellow at the center, with salmon amber and pink shadings, gradually deepening toward the tips. Flowers are the largest size.
75c each.

Eldorado (Decorative)—A compact low growing bush with immense golden yellow which stand up on the flower. Very beautiful.
\$1.00 each; 3 for \$2.75.

F. W. Fellows (Cactus)—One of the best varieties ever raised. Flowers of unusual size, in color it is an intense coral red, with deeper suffusion at the center.
40c each; 3 for \$1.10.

Insulinde (Decorative)—Bronzy orange, great stems two feet long. Flowers 7 to 9 inches across. A giant Dahlia.
50c each; 3 for \$1.25.

Jersey Beacon—One of the most attractive red flowers. A brilliant Chinese scarlet with a buff reflex, giving a two tone effect. Long vigorous habit.
\$1.00 each; 3 for \$2.75.

Jersey Beauty (Decorative)—Large exhibition blooms of an American Beauty rose shade. Stem very long, a real Dahlia. 50c each; 3 for \$1.25.

Judge Marean (Decorative)—Very large flowers, perfectly formed, the combination of colors, salmon, pink, red iridescent orange, yellow and gold, all blending together.
50c each; 3 for \$1.35.

Margaret W. Wilson (Decorative)—A very fine opalescent pink, the flowers are produced on long stems and is the one Dahlia that attracts so much attention at the flower shows.
\$1.00 each; 3 for \$2.85.

Mrs. I. de Ver Warner (Decorative)—Few Dahlias have been given such a reputation. Blooms well under all conditions. Color a pleasing mauve or orchid which everyone loves.
50c each; 3 for \$1.35.

Patrick O'Mara—The flowers are good size, perfect form and a large chrome yellow in color with a salmon red suffusion.
50c each; 3 for \$1.35.

Rodman Wanamaker (Decorative)—A very attractive light salmon toned yellow of outer petals with yellow center. Free bloomer of the largest size.
\$1.00 each; 3 for \$2.85.

Shudow's Lavender (Decorative)—A large flower of silver lavender, shading to white, a constant bloomer. One of the finest for cut flowers.
75c each; 3 for \$2.00.

Decorative Hedges

THE living fence—one made of plants, attractive with green leaves, colored foliage or bright berries, may be formally trained or arched branched with effects far more pleasing than the stiff mechanical wood or metal fencing. A living hedge is permanent—once planted, only occasional pruning or shearing is required.

California Privet

The Privet, in all its varieties, deserves attention as an ornamental plant. It is almost an evergreen, and grows freely in all soils; is compact and regular in its form and bears shearing to any extent. Distinctive—they are more in demand every year.

Privet, California—The best of all hardy hedge plants and is easily kept at any height desired. Has no thorns, does not sucker from the roots and is not objectionable in any way. A universal favorite.

Privet (Amoor River North)—A distinct type which has been hardy in the North. Foliage and habit of growth almost identical with the variety grown in the South. Flowers white, fruit black.



	Price Per 10	Per 100	Per 1000
California 2 year, 2 to 3 feet	\$1.00	\$ 6.00	\$ 50.00
California 2 year, 18 to 24 inches75	5.00	35.00
California 2 year, 12 to 18 inches60	4.00	25.00
California 2 year, 8 to 12 inches65	3.00	20.00
Amoor River North, 18 to 24 inches	2.00	14.00	120.00
Amoor River North, 12 to 18 inches	1.75	12.00	100.00
Amoor River North, 8 to 12 inches	1.25	10.00	85.00

We have over 500,000 Privet, fine, bushy plants and these very low prices should interest you.

Add 1/2c Each per Plant if by Parcel Post

Ibota—One of the hardy privets that thrives in any soil and shady locations. Has fragrant flowers in June and black berries in Fall and Winter. Oval leaves of dark grayish green turning wine color. Grows 5 to 6 feet when it is left untrimmed.

	Price Per 10	Per 100	Per 1000
Ibota Privet, 2 yr. transplanted, 12 to 18 in.	\$.15	\$ 1.25	\$ 10.00
Ibota Privet, 2 yr. transplanted, 18 to 24 in.20	1.50	12.00
Ibota Privet, 2 yr. transplanted, 2 to 3 ft.25	2.00	15.00
Ibota Privet, 2 yr. transplanted, 3 to 4 ft.30	2.50	20.00
Ibota Privet, 1 yr. transplanted, 8 to 10 in.12	1.00	6.00
Ibota Privet, 1 yr. transplanted, 10 to 12 in.15	1.25	8.00
Ibota Privet, 1 yr. transplanted, 12 to 18 in.20	1.50	10.00

We are here quoting reduced prices on Ibota and Regal Privet.

Regel's Privet—Considered the finest of the Privets for shrubbery borders. Clear cut, fine foliage, and a bush of refined habit. The low-spreading, horizontal granches also make it a very fine plant for low hedges. Plant deeply in a hedge planting, giving the plants a severe trimming, and they will make a bushier, more compact hedge. Graceful and distinctive—they are more in demand every year. Used extensively for shrubbery border planting.

RATES	
5 or more	at 10 rates
.50 or more	at 100 rates
400	at 1000 rates

	Each	Per 10	Per 100
Regel Privet 2 yr. transplanted 8 to 10 in.	\$.15	\$ 1.25	\$ 10.00
Regel Privet 2 yr. transplanted, 10 to 12 in.20	1.75	15.00
Regel Privet 2 yr. transplanted 12 to 18 in.25	2.00	18.00
Regel Privet 2 yr. transplanted 18 to 24 in.30	2.75	25.00

ORNAMENTAL HEDGES (Continued)

Our stock of Globe Shaped Privet is compact and properly sheared to perfect balls. We ship this stock balled and burlapped, hence can be dug and transplanted at any time during the year. Handle the ball of earth same as an evergreen when planting and, as instructed, do not remove the burlap at all, do not even cut the tying cord. The Globe Shaped Privet balls are very appropriate for planting with evergreens. Its glossy black-green foliage makes a wonderful contrast when planted in groups of evergreens. Very popular at seashores where evergreens of many varieties fail to thrive. Thousands of both the standard and Globe Shaped Privet can be seen at Atlantic City, N. J., where they retain their foliage all winter long.



50 THOUSAND BARBERRY THUNBERGII

Globe shaped Privet, 12x12 in.	Each	Per 10
Globe shaped Privet, 15x15 in.	\$1.00	\$ 8.00
Globe shaped Privet, 18x18 in.	1.25	10.00
Globe shaped Privet, 20x20 in.	1.50	12.50
Globe shaped Privet, 22x22 in.	2.00	15.00
	2.50	20.00

BARBERRY THUNBERGII HEDGING

	Per 10	Per 100	Per M
Barberry Thunbergii 2-3 ft. 3 yrs. transplanted	\$3.00	\$24.00	\$200.00
Barberry Thunbergii 18-24 in. 2 yrs. transplanted	1.80	14.00	120.00
Barberry Thunbergii 12-18 in. 2 yrs. transplanted	1.40	7.00	80.00
Barberry Thunbergii 8-12 in. 2 yrs. transplanted	1.00	7.00	60.00

RED LEAF BARBERRY

See Page 7



FIELD OF CALIFORNIA PRIVET

The illustration will show you one of our vast fields of California Privet. The Western Maryland Nurseries are heavy growers of all kinds of hedge plants. In the field shown there are over 750,000 plants. The field of Barberry above, of which we are heavy growers, there is over 50,000 plants growing. We can furnish you one plant or a car load.

Suitable Distances for Planting

Apples, Standard	30 to 40 feet
Apples, Dwarf	8 to 10 feet
Pears, Standard	18 to 20 feet
Pears, Dwarf	10 feet
Peaches and Apricots	16 to 18 feet
Cherries, Sweet	18 to 20 feet
Cherries, Sour	15 to 18 feet
Plums	16 to 20 feet
Quinces	10 to 12 feet
Grapes	8 to 10 feet
Currants	3 to 4 feet
Gooseberries	3 to 4 feet
Raspberries	3 to 4 feet
Blackberries	5 to 7 feet
Strawberries	1½ by 1½ feet
Asparagus, in beds	1 by 1½ feet
Asparagus, in fields	1 by 3 feet

OUR UNUSUAL HEDGE OFFER

50 plants Japanese Barberry 8-12 in. by express collect for \$3.10 or 50 plants California Privet 8-12 in. for \$1.39 by express collect.

GLOBE SHAPE PRIVET

Our special four plants 12x12 in. B & B shipped express collect for \$3.10, furnished at this price only as a collection. These will give you the same appearance as Boxwood—they grow more rapidly and much cheaper in price. Fine to use in plantings, order our collection today.

Fruit Section

IN our nurseries we pay special attention to the fruit trees, berry plants as well as to Ornamentals. You will find that our nurseries are located approximately 800 feet above sea level. Far enough from the Ocean to get the benefit of the moisture and the atmosphere which is so essential to growing various lines of stock. Our ground drains well, being high and rolling, therefore our fruits, berries and all the plants we send out, make a reasonable, fast, sturdy, strong growth. You will find that our trees are far superior to trees that are growing down on sea levels or on rich bottom land where they make a rapid, soft growth which is not so beneficial to them when it comes to transplanting and producing bearing trees. The wood in our trees produced at our elevation is tougher. We have a fine root system. The trees are not tall and overgrown. We space them far enough apart in the nursery that they develop nice, heavy trunks with the necessary amount of branches to make a quick bearing tree. I would say that our trees will produce fruit in one to two years sooner than some of the trees that are grown in close planted rows on heavy bottom soil and at lower altitudes.

Give us a trial and you will find that our trees grow and bear in a reasonable length of time. The same way with our small fruits. You also will find that the way we pack our trees and shrubs they will reach you in the most perfect condition. We ship all over the United States and we never have complaints that our stock does not arrive in fine shape. We take as much time and effort in packing out your orders and spend more for packing materials and wrapping them than most nurserymen do. Give us an order and you will be convinced. Satisfaction guaranteed.

Apples

Summer Varieties

Red Astracan—Summer, medium size red striped, heavy bearer.

Golden Sweet—Large yellow, very fair, good grower.

Yellow Transparent—Very early, medium size, greenish yellow, heavy bearer, in great demand for pie and cooking purposes. One of the first good varieties on the market.

Early Harvest—Medium size yellow, fine for eating.

Fall Varieties

Duchess—Large red stripe, heavy bearer, fine for pies and sauce.

Gravenstein—An early Fall, large streaked and splashed with red.

Maiden Blush—Large red blush color.

Smoke House—Large yellow green mottled with dull red, fine flavor.

Paradise—A large green and red sweet apple, fine flavor and very good keeper.

Summer Rambo—Medium yellowish, streaked a dull red, fine grower, very productive.

William Early Red—Medium to large, bright red, good quality.

Wealthy—Medium red, very hardy and can be grown where many varieties do not thrive.



Fruit Tree Combination Collection No. 280

7 QUALITY XXX GRADE TREES

- | | |
|---------------------------|-----------------|
| 1 Stayman's Winesap Apple | 1 Elberta Peach |
| 1 Early Richmond Cherry | 1 Bartlett Pear |
| 1 Black Tartarian Cherry | 1 Orange Quince |
| 1 German Prune | |

Catalog Price, \$5.55

Collection Price

\$3.98

NET CASH WITH ORDER—NO DISCOUNT

SEE PRICES NEXT PAGE

APPLES(Continued)

Winter Varieties

Cortland—Red, new variety. A cross between McIntosh red and Ben Davis.

Delicious—Red, large, very highly flavored. One of the most popular and highest priced apples grown. Include these in your order.

Fallawater—Very large, yellowish green, dull red cheek. A strong grower, fine cooking apple.

Grimes Golden—This is a medium size, yellow, heavy bearer, excellent flavor.

Jonathan—No doubt there is not another apple planted so extensively as the Jonathan. Bright red, medium size, excellent quality, good keeper.

McIntosh—A large red, flesh white, one of the best flavored apples grown. An extraordinary variety.

Rome Beauty—Extra large, red, and a very late keeper. Good flavor and brings the highest price.

Stark—Extra large apple of greenish yellow with red blush. Good keeper. Good baking apple.

Spitzenberg—Very fine for winter use. Good flavor, almost a bright red apple. Will keep until February.

Staymans Winesap—Large bright red and juicy. Good flavor and the quality ranks with the best. A fine keeper and always demands the highest price.

Hyslop—Almost as large as Early Strawberry apple. Deep crimson; very popular on account of its size, beauty and hardiness; tree vigorous.

Martha—Resembles the Transcendent, but is larger; handsome, showy fruit; bears enormously.

Transcendent—Origin, Russia. Season, September. Fruit medium to large; color a brownish-yellow with blush of carmine; flesh firm and crisp, yellowish, fine grained, very juicy, acid. Tree is a vigorous grower. Hardy. Subject to blight and should not be planted near other orchard trees.

Acme—A new and fine variety; tree stout, healthy and hardy, with handsome foliage. Fruit large and sweet; rich, yellow with red cheeks. July.

Early Golden—Small, roundish oval; color pale orange with smooth skin; flesh yellow, juicy, sweet and of the best quality; hardy and productive. Freestone.

Winter Banana—Large yellow, finely flavored and a reddish blush.

York Imperial—Bright red, medium size, tree very heavy bearing, good quality, long keeper. This apple should be planted in all commercial orchards South of Central Pennsylvania. Space will not permit listing other varieties.

Prices Of All Apples Listed

2 year, height 5 to 7 feet, caliper 11-16 inch and up, XXX, each, 65c; 10, \$5.50; 100, \$45.00.

2 year, height 4½ to 6 feet, caliper 9-16 to 11-16 inch, XX, each 50c; 10, \$4.00; 100, \$35.00.

2 year, height 4 to 5 feet, caliper 7-16 to 9-16 inch, X, each, 35c; 10, \$3.00; 100, \$25.00.

Apple One-Year Trees: (Mostly Buds)

4 to 5 feet, each 45c; 10, \$4.00; 100, \$35.00.

3 to 4 feet, each, 35c; 10, \$3.00; 100, \$25.00.

2 to 3 feet, each, 30c; 10, \$2.50; 100, 20.00.

Dwarf Apples

2 years, 4 to 5 feet, each, 75c; 10, \$7.00.

2 year, 3 to 4 feet, each, 65c; 10, \$6.00.

Same Varieties as Standard Apples

Parcel Post Size, 2 to 3 feet and 3 to 4 feet only, at 5c extra per tree.

Crab Apples

Whitney—Large, glossy green, splashed with crimson; flesh firm, juicy, flavor very pleasant; tree a good bearer and very hardy; ripens last of August.

First class, 4 to 6 ft. high, XXX, each, 85c; \$7.00 for 10.

First class, 4 to 5 ft. high, XX, each, 65c; \$5.00 for 10.

Varieties, Hyslop, Martha, Whitney and Transcendent.

Apricots

2 year, 4 to 5 ft. high, XX, each 75c; \$7.00 for 10.

2 year, 3 to 4 ft. high, X,, each, 50c; \$4.50 for 10. Varieties, Acme and Early Golden, etc.

Parcel Post Size 3 to 4 feet, add 5c per tree extra.

Fruit Tree Combination Offer

7 XXX QUALITY TREES

- 1 Stayman—apple
- 1 Early Richmond—cherry
- 1 Montmorency—cherry
- 1 Elberta Peach
- 1 Bradshaw Plum
- 1 Bartlett Pear

Catalogue Price \$4.85 Collection.

Net cash with order, no discount. By express collect.

\$3.97

Peaches

OUR Peach Trees have made an excellent growth and will grade up fine and we have a good supply to offer. Mostly 5 to 6 feet, 4 to 5 feet and 3 to 4 feet trees. Nice trees.

A large stock of Elberta, J. H. Hale and Roberta.

We wish to call your special attention to the fact that every one of our large stock of Peach Trees is budded on North Carolina natural seedlings, the most hardy in the United States. Our trees are well-grown, smooth and well rooted. Our prices are low, considering the quality. Let us have your order at once, that we may reserve the varieties for you. Notice about time of ripening for Westminster, Md.

Belle of Georgia—A well-known standard variety. Early August.

Champion, W—An early peach of ironclad hardness. Remarkable for its size and quality, many specimens having attained to the size of ten inches in circumference. Free. August 25.

Chair's Choice—A mid-season bearing peach. September 12th.

Late Crawford—Superb yellow peach; of large size and excellent quality; great bearer. September 18th.

Carman—Large, rich, juicy and of high quality; pale yellow with deep blush; skin very tough. Free from rot and unsurpassed as a shipper. Very hardy and a very profitable market variety.

Elberta—The most popular peach grown. It is hardy, a sure bearer and very prolific. Fruit large, yellow with red cheek. Flesh yellow, firm, juicy and of high quality. A generally successful market peach, North and South. Ripens soon after Early Crawford. Free. September 1st.

Mt. Rose—A peach of merit. August 15th.

Niagara—In appearance just like Elberta and of same size. However, it is a much better peach in quality, much less subject to leaf curl and other diseases, hardier and about a week later. Free.

O. M. Free—A fine mid-season peach, bearing about September 15th.

Picquet's Late—A good variety. September 28th.

Ray—An early variety. August 10th.

Roberta—In the market at mid-season. September 10th.

Rochester—Earliest yellow peach; red-cheeked; juicy and delicious. Strong grower and early bearer. August 15th.

Smock, Beer's—Large yellow, with dull red cheek; quality second class, hardy, robust and an immense bearer. Free. September 25th.

Fox Seedling—A strong mid-season variety. September 15th.

Greensboro, W—An improvement on the Alexander with which it ripens, but it is double the size and very beautiful. Prolific and of excellent quality. July 4th.



J. H. Hale—New. A remarkable peach of the Elberta type, discovered by the late J. H. Hale, of Connecticut, famous as the Peach King of America. Described as a few days earlier than Elberta, hardier in bud and tree and equally productive. Its fruit average larger, is more round, firmer, heavier and has less fuzz on its skin. In quality and beauty it is at least the equal of Elberta. Free. Early September.

Hiley Early—A very early variety that gets into the market long before the standard mid-season varieties. July 20th.

Stump—A variety coming into market just before the Morris White and Salway.

Salway—One of the best and most regular bearers. Very large, creamy yellow with crimson cheek. Flesh deep yellow, juicy, rich and sweet. Early October.

Health Cling (White Health Cling)—Originated in Maryland, where it is much esteemed. Of large size and good flavor. September.

PRICES OF ALL VARIETIES OF PEACH TREES—1 YEAR FROM BUD

	Height	Caliper				
Extra	6 to 7 feet	5/8 inch and up	XXXX ..	\$.50	\$4.00	\$35.00
First Class	5 to 6 feet	9-16 to 5/8 inch	XXX ..	.40	3.50	30.00
First Class	4 to 5 feet	7-16 to 9-16 inch	XX ..	.35	2.75	20.00
First Class	3 to 4 feet	5-16 to 7-16 inch	X ..	.25	2.75	15.00
First Class	2 to 3 feet	about 5-16 inch, partly branched		.20	1.50	12.00

Size 2 to 3 ft. and 3 to 4 ft., 5c postage extra.

Standard Pears

THE home orchard is not complete without pears and they are a very profitable commercial crop in nearly all parts of the country. Pears will live on a variety of soils, but succeed exceptionally well in a hard clay soil. Tilling and fertilizing are advisable to a certain extent, but should not be carried far enough to produce too vigorous a growth. The quality of the pear is much improved by picking before maturity and by proper ripening indoors.

My Pear Trees are Grown on Imported French Stock. Price of Pear Trees, 2 Years

	Height	Caliper		Each	10	100
First class, extra	5 to 7 feet	11-16 inch and up	XXX	\$.85	\$2.50	\$60.00
First class	4 to 6 feet	9-16 to 11-16 inch	XX	.75	6.50	50.00
First class, 1 or 2 yr.	4 to 5 feet	7-16 to 9-16 inch	X	.65	5.00	40.00
First class, 1 yr.	3 to 4 feet			.50	4.50	30.00

Special prices will be given for orders of 125 or more Parcel Post Size 3 to 4 feet, add 5c per tree extra
Bosc Pear Trees, 15c each additional

2 Year	3½ to 5 feet	11-16 inch and up	XXX	\$.80	\$7.00	\$50.00
2 Year	3 to 4 feet	9-16 to 11-16 inch	XX	.60	5.50	45.00
2 Year	2 to 3 feet	7-16 to 9-16 inch	X	.50	4.50	40.00

Add 2c per tree extra for Bartlett and Seckel. 3 to 4 feet, add 5c per tree extra
Parcel Post Size 2 to 3 feet and

Bartlett—Best and most popular of all pears for market and home use. Color clear yellow with a faint blush on exposed cheek. Fruit very large, thin skinned; flesh buttery and melting, rich musky flavor. Its splendid qualities render it a general favorite everywhere. Tree strong grower, bears young and abundantly. August and September.

Buerre D'Anjou—Great money maker. Fruit large, buttery and melting. Late. Keeps until winter holidays.

Beuree Bosc—A large russet pear with long neck; melting, high flavored and delicious. Bears well. September to October.

Clapp's Favorite—Very large; pale lemon-yellow color, with bright crimson cheek. Flesh finely grained, juicy, melting and butterfly. Earlier than Bartlett. August and September.

Duchess (Douchess d'Angouleme)—Very juicy, with rich, excellent flavor. An all around variety for dessert, cooking and market. Succeeds best as a dwarf.

Flemish (Flemish Beauty)—Large; pale yellow, covered with light russet, turning reddish-brown when ripe, flesh juicy, very sweet, rich and melting.

Kieffer—Medium large; yellow and crimson, with russet and brown; flesh firm and good when ripe; the Ben Davis of the pear family; when properly ripened is delicious. Tree vigorous, with healthy, dark green foliage; an early bearer and very productive everywhere. October.

Lawrence—Medium; lemon yellow, flesh sweet, melting, aromatic; recommended as one of the very best winter sorts. Tree hardy, healthy and productive. Either dwarf or standard. November-December.

Seckel—Fruit small; skin rich yellowish brown, with a deep brownish red cheek. Very juicy; one of the richest and highest flavored pears known September and October.

Sheldon—Large, round, greenish-yellow in color, covered with light russet. It is very juicy, and has a tasty flavor. The tree is a fine grower and a good bearer. October to November.

Worden (Worden's Seckel)—Medium size; golden yellow, with russet cheek; flesh fine grained, juicy, buttery, with a rich aroma; recommended highly as a dessert and market sort. Tree hardy and an enormous bearer. September.

These varieties listed above can be furnished either in Standard or Dwarf Pear Trees.

Cherries

Sour Varieties

Early Richmond—Medium size, dark red; sprightly acid flavor. This is one of the most valuable and popular of the acid cherries, and is unsurpassed for cooking purposes. Tree a splendid grower and is exceedingly productive. The most hardy of all varieties. Ripens through June.

Dyehouse—One of the best sour cherries for

quality and has a smaller pit than Early Richmond. The tree is hardy, is an upright grower and always productive.

Late Duke—Large, heart-shaped, dark, handsome red when fully ripe; flesh light colored, sub-acid; flavor good; one of the latest.

Large Montmorency—A large, red, acid cherry; larger than Early Richmond and fully ten days later.

SEE PRICES ON NEXT PAGE

CHERRIES (Continued)

Sweet Varieties

Bing—Fruit large, dark brown or black; one of the most delicious late sweet cherries on the Pacific coast; is considered one of the most profitable. Tree hardy and vigorous; seems to succeed East better than most sweets. Late.

Black Tartarian—Very large, bright purplish black, half tender, juicy, very rich, excellent flavor; productive; free. Ripens first to middle of July.

Governor Wood—Clear, light red, tender and delicious. Hangs well on the tree. End of June.

Napoleon—A magnificent cherry of the largest size; pale yellow, with bright red cheek; very firm, juicy and sweet. Bears enormous crops; ripens late; valuable for canning.

Windsor—Very vigorous growth; large, liver-colored; very firm; very good; a very valuable variety; hardy. Ripens end of July.

Yellow Spanish—Vigorous growth, large; pale yellow, with red cheeks; firm, juicy and delicious; very good. Ripens end of June.

Budded on French Mazzard Stocks

2 Year	5 to 7 feet	11-16 inch and up	XXX	\$1.00	9.00	\$80.00
2 Year	4½ to 6 feet	9-16 to 11-16 inch	XX	.80	7.50	70.00
2 Year	4 to 5 feet	7-16 to 9-16 inch	X	.65	6.00	50.00

Budded on French Mahaleb Stocks

2 Year	5 to 7 feet	11-16 inch and up	XXX	\$.80	\$7.50	\$70.00
2 Year	4½ to 6 feet	9-16 to 11-16 inch	XX	.70	6.50	60.00
2 Year	4 to 5 feet	7-16 to 9-16 inch	X	.60	5.50	50.00

Plums

Abundance—The chief asset, which has given the variety its greatest popularity, is its name, abundance in fruit. Tree bears early, a pinkish red changing to a darker red, mottled with thin bloom. August.

Bradshaw—The tree grows large and well formed, bears regularly and heavily. The plums are large, attractive in appearance, being a light purplish red changing to dark reddish at maturity. Keeps and ships well. August.

Burbank—Most prolific variety for the market. The most popular Japan sort. A good keeper and an excellent shipper. Valuable for canning and market. Fruit is large, excellent quality, juicy, tender and fine flavored. Skin is dark red, over a yellow ground, thick bloom. Can be picked before ripe and will color perfectly. The tree is vigorous, very productive and needs close pruning. July.

German Prune—Large, dark blue, rich and agreeable flavor; well thought of for drying and therefore commercially desirable. September.

Lombard—Probably the most widely planted in America, medium size, violet-red in color, hardy and productive, having a good market value. Adapts itself to any soil and will thrive in any climate. A healthy, productive and regular bearer. Extremely hardy. Excellent for canning and preserving. August.

Moore's Arctic—Small, purplish black, juicy, sweet, immense bearer. One of the hardiest in bud and bloom.

Satsuma—Large, globular, with sharp point. Purple and red. Flesh firm, juicy, dark red color. Vigorous grower.

Shropshire Damson—Is the best known of the Damsons, being found not only in nearly all commercial plantations, but in the smallest home collections as well. Shropshire is enormously productive, bearing its load of fruit year after year until it is a standard among fruits for productivity and reliability in bearing, which is late in season. October.

Wickson—The largest of the oriental plums, if not the largest of all plums. Its handsome color of red and distinct form make it very attractive. A good market variety. September.

Shiro—A well-known variety, giving satisfaction wherever grown.

2 year, height 5 to 7 ft., caliper 11-16 in. and up,	XXX, each, 75c; 10, \$7.50; 100 \$60.00.
2 year, height 4½ to 6 ft., caliper 9-16 to 11-16 in.,	XX, each, 60c; 10, \$4.00; 100, \$40.00.
2 year, height 4 to 5 ft., caliper 7-16 to 9-16 in.,	X, each, 50c; 10, \$4.00; 100, \$30.00.

Quinces

Champion—A beautiful large quince of a golden yellow color, bears abundantly quite late in season. Last of October.

Meech's Prolific—Ripens earliest of all quinces. Quality unsurpassed and quince itself is very large, of a yellowish color.

Orange—This fruit, of a bright golden yellow, is considered one of the best for its quality. Ripens in October.

Bourgeat—Very large, smooth, golden-yellow. Tender and is a good keeper. Very productive and healthy.

2 year, height 4 to 6 ft., xxx, each, \$.90; 10, \$8.00
2 year, height 3 to 4 ft., xx, each, \$.70; 10, \$6.50.
2 year, 2 to 3 ft., x, each, \$.50; 10, \$4.50.

Parcel Post size, 2 to 3 feet, add 5c per tree extra.

Blackberries

Snyder—Very hardy and productive; fruit medium size, with no hard, sour core; half as many thorns as Kittatiny, and they are straight and short; comparatively free from rust; a safe and profitable berry to plant; succeeds and yields well anywhere.

Blowers—Fruit large and of good quality; plant a strong grower, hardy and productive. A promising new variety.

Early Harvest—The earliest of the Blackberries; fruit medium, glossy black; good quality, firm and attractive in appearance. Plant hardy and productive.

Eldorado—A valuable variety; medium size, jet black, melting, sweet and rich; hardy and very productive.

Snyder. Each, 15c; 10, 60c; 100, \$4.00; 1000, \$30.00.
Early Harvest. Each, 15c; 10, 60c; 100, \$4.00; 1000 \$30.00.

Eldorado. Each, 15c; 10, 75c; 100, \$4.50; 1000, \$35.00.

Blowers. Each, 15c; 10, 75c; 100, \$5.50; 1000, \$35.00.

By Parcel Post add 2c per plant extra

Raspberries

Cumberland (Black)—In hardiness and productiveness it is unexcelled by any other variety; berries are large and fine; quality very similar and fully equal to Gregg; fruit firm and will stand long shipments. Ripens mid-season.

Kansas (Black)—Originated at Lawrence, Kansas; healthy, vigorous and not subject to leaf blights; produces strong, healthy tips; fruit large, as fine a berry as Gregg and equally as good a shipper; ripens early; very prolific.

St. Regis—A new acquisition to the Red Raspberry family. Fruit commences to ripen with the earliest and continues on young canes until October. Large, bright crimson; flesh firm and meaty. Good shipper and very prolific.

Latham—A new Red Raspberry that is extraordinary in its size, productiveness and hardiness. A favorite among growers.

Cumberland (Black)—10, 75c; 100, \$4.00; 1000, \$25.00.

Kansas (Black)—10, 60c; 100, \$3.75; 1000, \$25.00.
St. Regis Everbearing (Red)—10, 60c; 100, \$3.50; 1000, \$25.00.

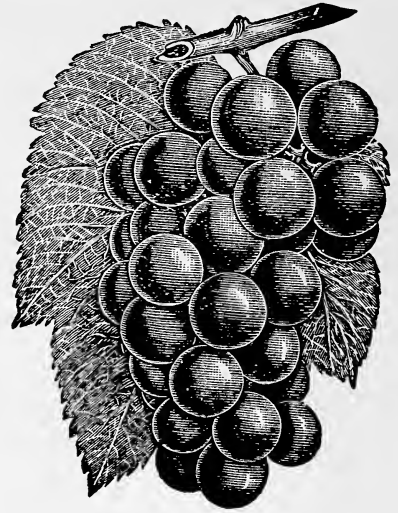
Latham (Red)—10, \$1.00; 100, \$8.00.

By Parcel Post add 1c per plant extra. Special prices given on large quantities

Lucretia Dewberry—Fruit very large, luscious and handsome; perfectly hardy; a strong grower and very productive; a superb and profitable market fruit.

Lucretia Dewberry. Each, 10c; 10, 60c; 100, \$4.00; 1000, \$30.00.

By Parcel Post add 2c per plant extra



Grapes

Moore's Early—A large, purplish-black berry; sweet and of good quality, ripening about ten days earlier than Concord. Vine vigorous and hardy.

Worden—Bunches large and almost black when fully ripe; berries large and thin-skinned; juicy and highly flavored; about ten days ahead of Concord.

Catawba—A good, long-lived market variety; much in demand for wine and champagne; large berries, copper-red and purplish. Requires a long season. Excellent keeper. Late September.

Agawam—Red in color; skin thick and berries large. Ripens early and is very vigorous. Late September.

Niagara—A leader among the white varieties; a highly profitable market grape; both the berry and bunch are large, greenish-white tinted with pale yellow when ripe. Skin is thin, but tough; plant is hardy and a good yielder.

Moore's Diamond—Leading early white grape with yellowish tinge; bunches large, very few seeds, juicy and free from pulp. Vine vigorous in growth, bears early September.

Concord—More Concord planted by vineyardists than all other varieties combined. Berries large, black, covered with rich bloom.

Campbell's Early—One of the best of the early varieties; a comparatively new grape; especially successful for market purposes; flavor rich and sweet; clusters are large and handsome, black with light purple bloom; vine strong and vigorous grower.

The New Caco—Red; has a most delicious flavor of the highest quality. Cross between Concord and Catawba. The vines are very strong growers, hardy, healthy and prolific. Ripens early. 2 year No. 1, each, 35c; 10, \$2.00; 100, \$15.00.

Varieties, Moore's Early, Worden, Catawba, Agawam, Niagara, Moore's Diamond.

Concord, 2 year No. 1, each, 15c; 10, \$1.20; 100, \$12.00.

Campbell's Early, 2 year, each, 40c; 10, \$3.00; 100, \$25.00.

Caco Early, 2 year, each, 60c; 10, \$5.00; 100, \$40.00.

Currants

Cherry—Large, red; bunches short; plant is vigorous and productive.

Fay's Prolific—The most popular Red Currant; very large and handsome.

Red Cross—This is a strong growing, medium season variety; clusters are long and of medium size; berries are large in size. Probably the sweetest of all varieties.

2 year No. 1 Fay's Prolific, each, 25c; 10, \$2.00; 100, \$17.50.

1 year No. 1 Fay's Prolific, each, 20c; 10, \$1.75; 100, \$15.00.

2 year No. 1 Cherry, each, 20c; 10, \$1.90; 100, \$16.00.

2 year No. 1 Red Cross, each, 25c; 10, \$2.50; 100, \$17.50.

By Parcel Post add 2c per plant extra

Gooseberries

Downing—Large, handsome, pale green and of splendid quality, both for cooking and table use. Bush is a vigorous grower and usually free from mildew.

Smith's Improved—Large, light green fruit, sweet and of good quality; vigorous and productive.

2 year No. 1 Downing and Smith Improved, each, 30c; 10, \$3.00; 100, \$20.00.

By Parcel Post add 2c per plant extra

DUTCH BULBS

We are importers of fancy Hyacinths, Tulips and various kinds of Dutch Bulbs. We carry a large list of varieties which is included in our free supplement and is free for the asking. With it we list a large stock of Peonies, Lillies, and all such plants which should be planted in the Fall.

Mulberries

Downing's Everbearing—A beautiful tree for the lawn; bears an abundant supply of sweet, refreshing fruit for several weeks; berries are about one and one-half inches long; color blue-black.

Hick's Everbearing—Medium, very sweet and good; tree vigorous and profuse bearer. Season extends over three months.

New American—Equal to Downing in all respects and much hardier tree. Vigorous grower and very productive, ripe from middle of June until September. Color black. 4 to 6 ft., each, \$1.25; 10, \$10.00.

Rhubarb

Eaton and Myatt's Linnaeus, each, 15c; doz., \$1.00; 100, \$4.00; 1000, \$35.00.

Horse Radish No. 1, 6 inch roots, doz., 60c; 100, \$2.50; 1000, \$20.00.

Horse Radish No. 1, Crowns, doz., 75c; 100, \$3.75; 1000, \$30.00.

RATES

Five or more at ten rates.

Fifty or more at one hundred rates.

Four hundred or more at one thousand rates.

TERMS

Cash with order, except in large orders, where satisfactory reference is given.

Our Home Garden Collection

50 Strawberries—Senator Dunlap.

50 Strawberries—Aroma

1 Grape—Concord

1 Grape—Moore's Early

1 Grape—Worden

1 Grape—Niagara

1 Apple—Jonathan

Peach—J. H. Hale

1 Plum—Abundance

All the above in nice strong plants for \$5.35. Express Collect.

Strawberries

ANY soil that will produce a good crop of corn is adapted to growing good Strawberries, but as they should be kept free from weeds, we believe it will pay you to select land free from weed seed, even if it is not your richest land. All plants of this class, tied 25 plants in a bunch; less the usual discount for cash with orders. Plants nicely packed on cars here. If by mail, add 10c per 100 plants. No plants dug for shipment after October 1st.

PRICES OF STRAWBERRY PLANTS

	50	100	500	1000
Senator Dunlap; a wonderful productive variety	\$1.00	\$1.85	\$5.00	\$8.00
Haverland; hardy, firm for shipping	1.00	1.85	5.25	8.50
Chesapeake; late, does best in damp soil	1.25	2.00	6.00	10.00
Premier; a new early berry of excellent quality	1.25	2.00	6.00	10.00
Oak's Early; extra early, a strong grower	1.00	1.85	5.25	8.50
Klondike; extensively planted in the South	1.00	1.85	5.25	8.50
Aroma; very late, exceedingly productive	1.00	1.85	5.25	8.50
Bubach; large size, handsome color	1.25	2.00	5.50	9.00
Gandy; prolific and fine shipper	1.00	1.85	5.25	8.50

Other varieties priced on application. By Parcel Post add ½c plant extra.

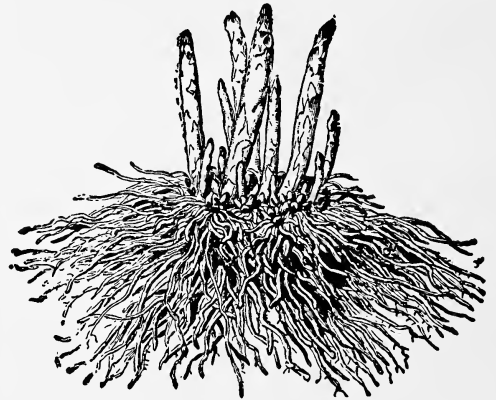
FALL BEARING STRAWBERRY PLANTS

Progressive	\$0.75	\$2.00	\$3.00	\$8.00	\$15.00
Superb75	2.00	3.00	8.00	15.00



SENATOR DUNLAP

Cash with order except in large orders where satisfactory reference is given.



Asparagus

WE can furnish the varieties listed below in selected 1 and 2 year old roots. Our asparagus is grown with the utmost care. Our soil is in such condition that it produces strong, fibrous roots, but not the soft luxulent growth. Our facilities for handling these plants are the best. They are fresh dug and brought into our packing buildings and kept from the wind and sun. Our roots will reach you in such condition that you won't lose one in a thousand. In our fields we have over five hundred thousand plants growing. Buy from us and you will get fresh plants by one of the largest growers.

Asparagus Palmetto

2 yr. No. 1, doz. 50c; 100, \$1.50; 1000, \$8.00.

Asparagus Pedigree Washington (Rust Proof)

2 yr. No. 1, doz. 75c; 100, \$2.00; 1000, \$12.00.
1 yr. No. 1, doz. 50c; 100, \$2.00; 1000, \$ 8.00



FRUIT ~

Our Apple Collection

Five Trees, 4 to 5 ft.

One summer and 4 winter varieties, which should bear enough Apples for a whole family—all for \$2, shipped express collect.

- | | |
|---------------------|-----------------|
| 1 Wealthy | 1 Jonathan |
| 1 Delicious | 1 Grimes Golden |
| 1 Stayman's Winesap | |

Our Special Family Cherry Collection

Five Trees, 4 to 5 ft.

- | | |
|-------------------|---------------|
| 2 Early Richmond | 2 Montmorency |
| 1 Black Tartarian | |

Shipped by express collect, all for \$3.56.

Our Family Berry Collection

- | | |
|-----------------------|-----------------|
| 10 Raspberries, Black | 10 Blackberries |
| 10 Raspberries, Red | |

We will select the best varieties for your locality. 30 choice plants for \$1.21, postpaid.

Special Offer
 2 Moore's Early,
 2 Concord, and
 2 Niagara
 For **\$1** Postpaid



Strawberries

100 Choice Strawberry plants, of the best varieties,

- | | |
|------------|-------------------|
| 25 Premier | 25 Senator Dunlap |
| 25 Aroma | 25 Late Champion |
- for 97 cts., postpaid.



Special Offer

5 well-known standard Peach trees

- | | |
|--------------------|--------------|
| 1 Belle of Georgia | 1 Roberta |
| 2 Elberta | 1 J. H. Hale |
- (Ripen in order given)

\$1, postpaid.



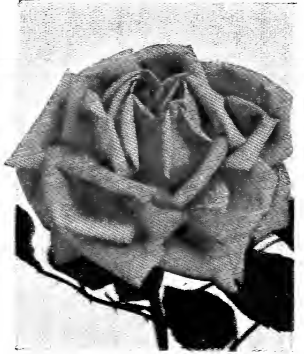
Golden Ophelia

ROSES

for Your Garden

Our Special Rose Offer!

6 Everblooming Roses, as
 pictured, fine
 plants,
 all labeled, for **\$2.45**
 PREPAID



Red Columbia

Our Master's Collection

Our Master's Collection of extra-fine Hybrid Tea and Hybrid Perpetual Roses.

16 fine 2-year-old bushes, our selection of varieties that will do best in your locality, **\$12.39** all labeled, a Rose-garden complete for **POSTPAID**

These Roses usually sell for \$1 each

Our Hybrid Rugosa Collection

These Roses grow into lovely shrubs and no planting is complete without this Collection.

- 1 Hugonis. The new yellow Rose from China.
- 1 F. J. Grootendorst. Everblooming red.
- 1 Conrad Ferdinand Meyer. Silvery pink.

All three fine two-year-old plants, ppd., \$2.85

THE WESTERN MARYLAND NURSERIES

WESTMINSTER, MARYLAND



Crusader



White Ophelia



Mme. Butterfly



Duchess of Wellington